

CPA1 Polyclonal Antibody
Catalog # AP69263**Specification**

CPA1 Polyclonal Antibody - Product Information

Application	WB
Primary Accession	P15085
Reactivity	Human
Host	Rabbit
Clonality	Polyclonal

CPA1 Polyclonal Antibody - Additional Information**Gene ID** 1357**Other Names**

CPA1; CPA; Carboxypeptidase A1

Dilution

WB~~Western Blot: 1/500 - 1/2000. Immunohistochemistry: 1/100 - 1/300. ELISA: 1/40000. Not yet tested in other applications.

Format

Liquid in PBS containing 50% glycerol, 0.5% BSA and 0.09% (W/V) sodium azide.

Storage Conditions

-20°C

CPA1 Polyclonal Antibody - Protein Information**Name** CPA1 ([HGNC:2296](#))**Synonyms** CPA**Function**

Carboxypeptidase that catalyzes the release of a C-terminal amino acid, but has little or no action with -Asp, -Glu, -Arg, -Lys or -Pro (PubMed:20385563, PubMed:8806703). Catalyzes the conversion of leukotriene C4 to leukotriene F4 via the hydrolysis of an amide bond (By similarity).

Cellular Location

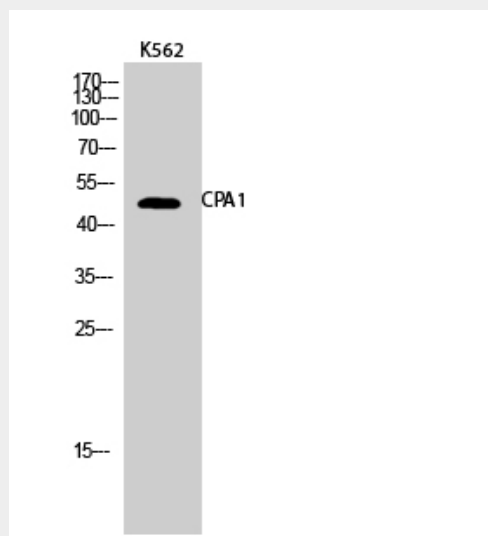
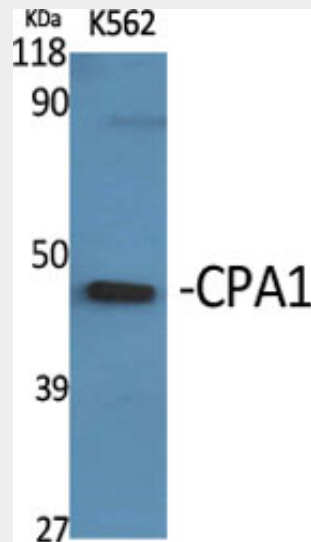
Secreted {ECO:0000250|UniProtKB:Q9UI42}.

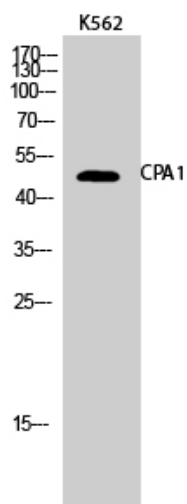
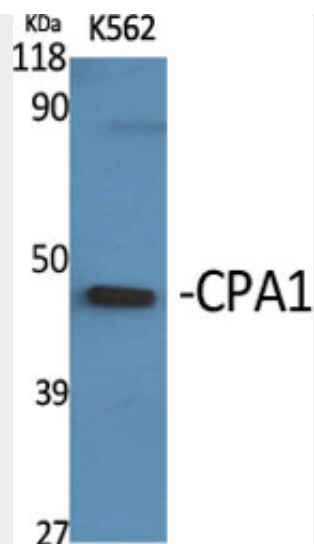
CPA1 Polyclonal Antibody - Protocols

Provided below are standard protocols that you may find useful for product applications.

- [Western Blot](#)
- [Blocking Peptides](#)
- [Dot Blot](#)
- [Immunohistochemistry](#)
- [Immunofluorescence](#)
- [Immunoprecipitation](#)
- [Flow Cytometry](#)
- [Cell Culture](#)

CPA1 Polyclonal Antibody - Images





CPA1 Polyclonal Antibody - Background

Carboxypeptidase that catalyzes the release of a C- terminal amino acid, but has little or no action with -Asp, -Glu, -Arg, -Lys or -Pro.