

Copine 8 Polyclonal Antibody
Catalog # AP69243**Specification**

Copine 8 Polyclonal Antibody - Product Information

Application	WB
Primary Accession	Q86YQ8
Reactivity	Human, Mouse, Rat
Host	Rabbit
Clonality	Polyclonal

Copine 8 Polyclonal Antibody - Additional Information**Gene ID** 144402**Other Names**

CPNE8; Copine-8; Copine VIII

Dilution

WB~~Western Blot: 1/500 - 1/2000. Immunohistochemistry: 1/100 - 1/300. ELISA: 1/40000. Not yet tested in other applications.

Format

Liquid in PBS containing 50% glycerol, 0.5% BSA and 0.09% (W/V) sodium azide.

Storage Conditions

-20°C

Copine 8 Polyclonal Antibody - Protein Information**Name** CPNE8 ([HGNC:23498](#))**Function**

Probable calcium-dependent phospholipid-binding protein that may play a role in calcium-mediated intracellular processes.

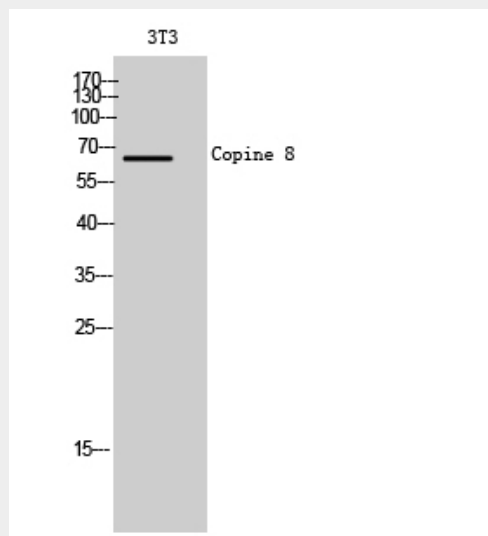
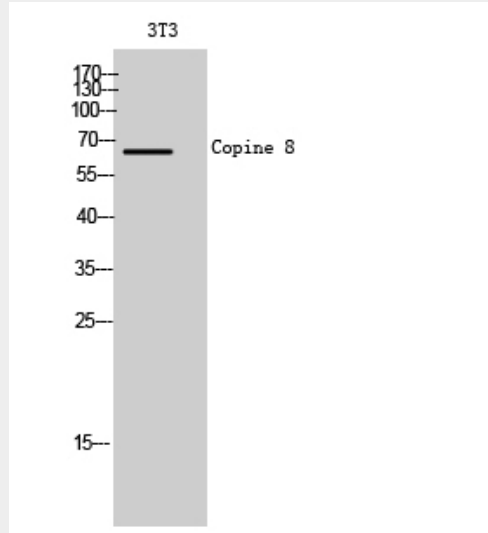
Copine 8 Polyclonal Antibody - Protocols

Provided below are standard protocols that you may find useful for product applications.

- [Western Blot](#)
- [Blocking Peptides](#)
- [Dot Blot](#)
- [Immunohistochemistry](#)
- [Immunofluorescence](#)
- [Immunoprecipitation](#)

- [Flow Cytometry](#)
- [Cell Culture](#)

Copine 8 Polyclonal Antibody - Images



Copine 8 Polyclonal Antibody - Background

Probable calcium-dependent phospholipid-binding protein that may play a role in calcium-mediated intracellular processes.