

COL9A1 Polyclonal Antibody
Catalog # AP69221**Specification**

COL9A1 Polyclonal Antibody - Product Information

| | |
|-------------------|------------------------|
| Application | WB |
| Primary Accession | P20849 |
| Reactivity | Human, Mouse |
| Host | Rabbit |
| Clonality | Polyclonal |

COL9A1 Polyclonal Antibody - Additional Information**Gene ID** 1297**Other Names**

COL9A1; Collagen alpha-1(IX) chain

Dilution

WB~~Western Blot: 1/500 - 1/2000. Immunohistochemistry: 1/100 - 1/300. ELISA: 1/5000. Not yet tested in other applications.

Format

Liquid in PBS containing 50% glycerol, 0.5% BSA and 0.09% (W/V) sodium azide.

Storage Conditions

-20°C

COL9A1 Polyclonal Antibody - Protein Information**Name** COL9A1**Function**

Structural component of hyaline cartilage and vitreous of the eye.

Cellular Location

Secreted, extracellular space, extracellular matrix

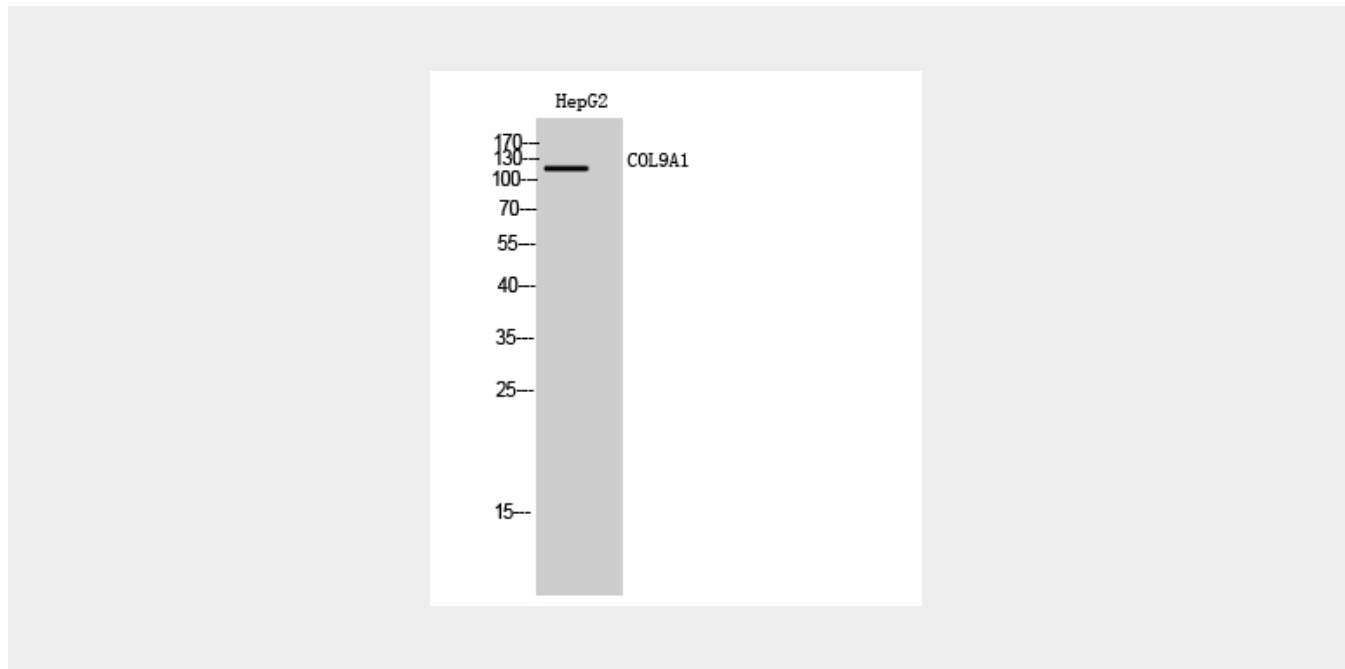
COL9A1 Polyclonal Antibody - Protocols

Provided below are standard protocols that you may find useful for product applications.

- [Western Blot](#)
- [Blocking Peptides](#)
- [Dot Blot](#)
- [Immunohistochemistry](#)

- [Immunofluorescence](#)
- [Immunoprecipitation](#)
- [Flow Cytometry](#)
- [Cell Culture](#)

COL9A1 Polyclonal Antibody - Images



COL9A1 Polyclonal Antibody - Background

Structural component of hyaline cartilage and vitreous of the eye.