

COL6A2 Polyclonal Antibody
Catalog # AP69218**Specification**

COL6A2 Polyclonal Antibody - Product Information

Application	WB
Primary Accession	P12110
Reactivity	Human, Mouse, Monkey
Host	Rabbit
Clonality	Polyclonal

COL6A2 Polyclonal Antibody - Additional Information**Gene ID** 1292**Other Names**

COL6A2; Collagen alpha-2(VI) chain

Dilution

WB~~Western Blot: 1/500 - 1/2000. Immunohistochemistry: 1/100 - 1/300. Immunofluorescence: 1/200 - 1/1000. ELISA: 1/10000. Not yet tested in other applications.

Format

Liquid in PBS containing 50% glycerol, 0.5% BSA and 0.09% (W/V) sodium azide.

Storage Conditions

-20°C

COL6A2 Polyclonal Antibody - Protein Information**Name** COL6A2**Function**

Collagen VI acts as a cell-binding protein.

Cellular Location

Secreted, extracellular space, extracellular matrix. Membrane; Peripheral membrane protein.

Note=Recruited on membranes by CSPG4

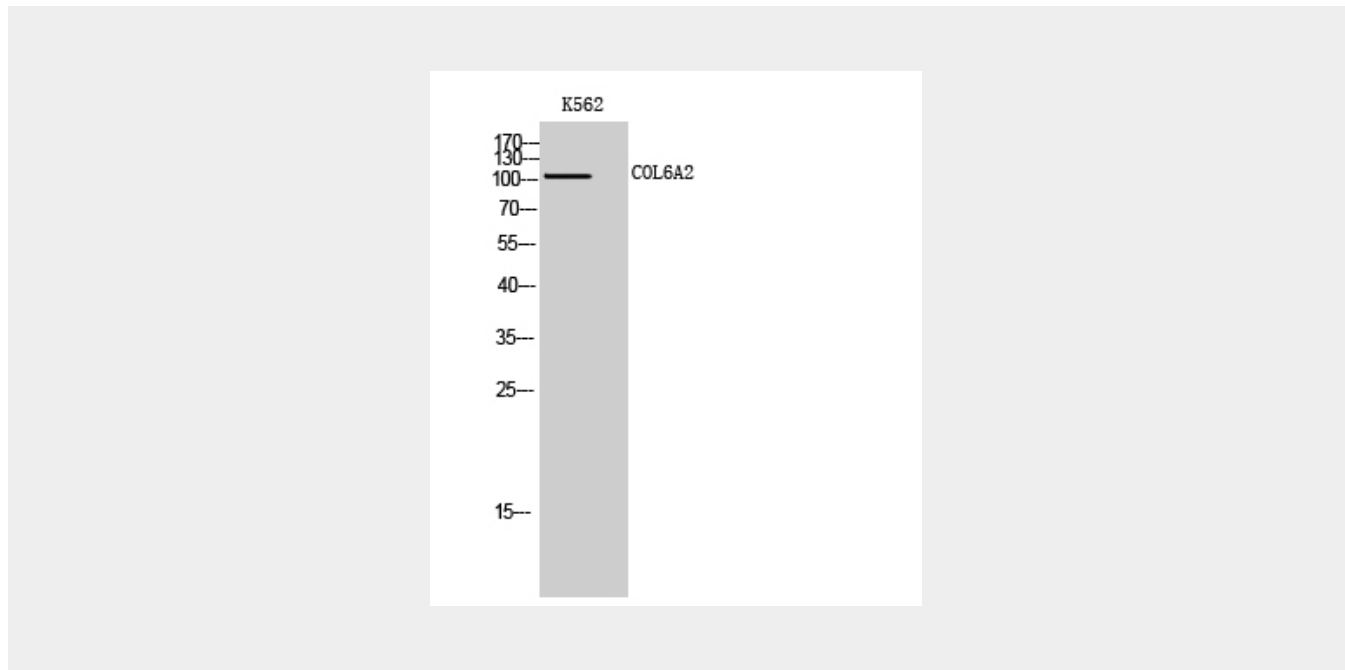
COL6A2 Polyclonal Antibody - Protocols

Provided below are standard protocols that you may find useful for product applications.

- [Western Blot](#)
- [Blocking Peptides](#)
- [Dot Blot](#)

- [Immunohistochemistry](#)
- [Immunofluorescence](#)
- [Immunoprecipitation](#)
- [Flow Cytometry](#)
- [Cell Culture](#)

COL6A2 Polyclonal Antibody - Images



COL6A2 Polyclonal Antibody - Background

Collagen VI acts as a cell-binding protein.