

COL4A2 Polyclonal Antibody
Catalog # AP69208**Specification**

COL4A2 Polyclonal Antibody - Product Information

Application	WB
Primary Accession	P08572
Reactivity	Human, Mouse
Host	Rabbit
Clonality	Polyclonal

COL4A2 Polyclonal Antibody - Additional Information**Gene ID** 1284**Other Names**

COL4A2; Collagen alpha-2(IV) chain

Dilution

WB~~Western Blot: 1/500 - 1/2000. Immunohistochemistry: 1/100 - 1/300. Immunofluorescence: 1/200 - 1/1000. ELISA: 1/20000. Not yet tested in other applications.

Format

Liquid in PBS containing 50% glycerol, 0.5% BSA and 0.09% (W/V) sodium azide.

Storage Conditions

-20°C

COL4A2 Polyclonal Antibody - Protein Information**Name** COL4A2 ([HGNC:2203](#))**Function**

Type IV collagen is the major structural component of glomerular basement membranes (GBM), forming a 'chicken-wire' meshwork together with laminins, proteoglycans and entactin/nidogen.

Cellular Location

Secreted, extracellular space, extracellular matrix, basement membrane

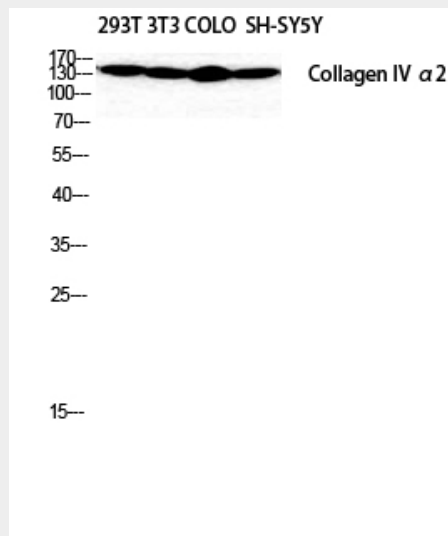
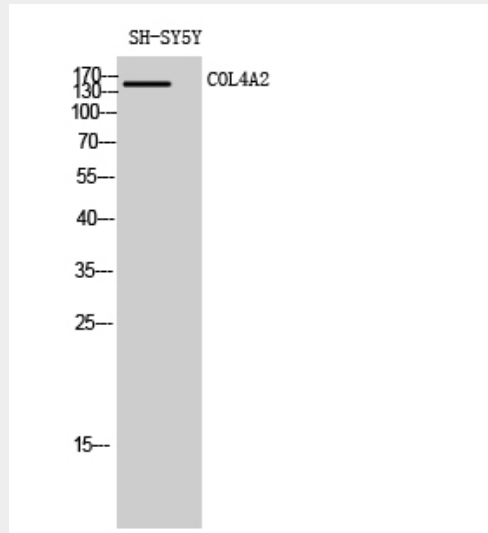
COL4A2 Polyclonal Antibody - Protocols

Provided below are standard protocols that you may find useful for product applications.

- [Western Blot](#)
- [Blocking Peptides](#)
- [Dot Blot](#)

- [Immunohistochemistry](#)
- [Immunofluorescence](#)
- [Immunoprecipitation](#)
- [Flow Cytometry](#)
- [Cell Culture](#)

COL4A2 Polyclonal Antibody - Images



COL4A2 Polyclonal Antibody - Background

Type IV collagen is the major structural component of glomerular basement membranes (GBM), forming a 'chicken-wire' meshwork together with laminins, proteoglycans and entactin/nidogen.