

**COL4A1 Polyclonal Antibody**  
Catalog # AP69207**Specification**

---

**COL4A1 Polyclonal Antibody - Product Information**

Application	WB
Primary Accession	<a href="#">P02462</a>
Reactivity	Human, Mouse
Host	Rabbit
Clonality	Polyclonal

**COL4A1 Polyclonal Antibody - Additional Information****Gene ID** 1282**Other Names**

COL4A1; Collagen alpha-1(IV) chain

**Dilution**

WB~~Western Blot: 1/500 - 1/2000. Immunohistochemistry: 1/100 - 1/300. ELISA: 1/20000. Not yet tested in other applications.

**Format**

Liquid in PBS containing 50% glycerol, 0.5% BSA and 0.09% (W/V) sodium azide.

**Storage Conditions**

-20°C

**COL4A1 Polyclonal Antibody - Protein Information****Name** COL4A1 ([HGNC:2202](#))**Function**

Type IV collagen is the major structural component of glomerular basement membranes (GBM), forming a 'chicken-wire' meshwork together with laminins, proteoglycans and entactin/nidogen.

**Cellular Location**Secreted, extracellular space, extracellular matrix, basement membrane  
{ECO:0000250|UniProtKB:P02463}**Tissue Location**

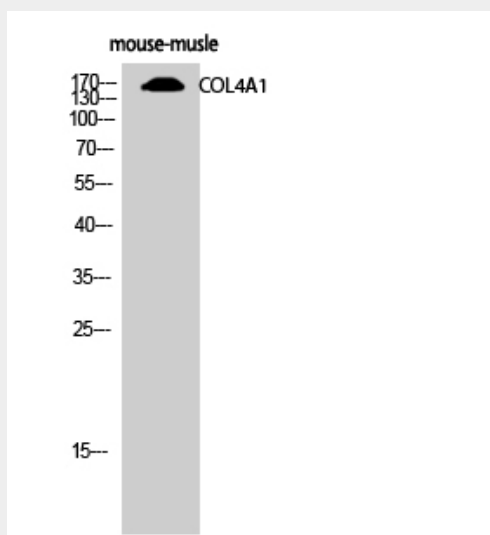
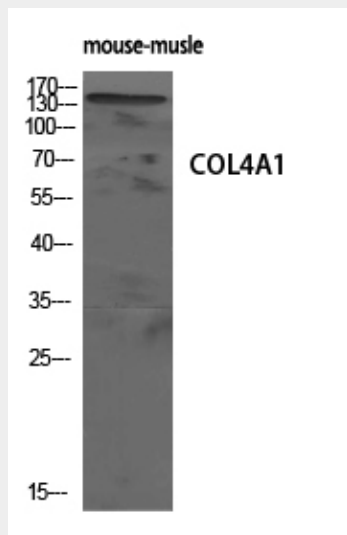
Highly expressed in placenta.

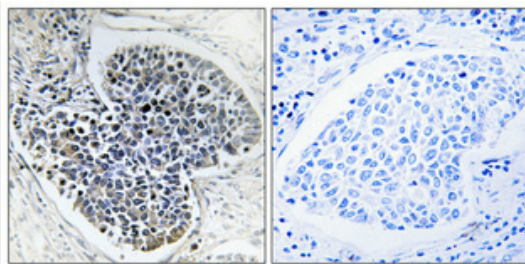
**COL4A1 Polyclonal Antibody - Protocols**

Provided below are standard protocols that you may find useful for product applications.

- [Western Blot](#)
- [Blocking Peptides](#)
- [Dot Blot](#)
- [Immunohistochemistry](#)
- [Immunofluorescence](#)
- [Immunoprecipitation](#)
- [Flow Cytometry](#)
- [Cell Culture](#)

### COL4A1 Polyclonal Antibody - Images





### **COL4A1 Polyclonal Antibody - Background**

Type IV collagen is the major structural component of glomerular basement membranes (GBM), forming a 'chicken-wire' meshwork together with laminins, proteoglycans and entactin/nidogen.