

**COL1A2 Polyclonal Antibody**  
Catalog # AP69202**Specification**

---

**COL1A2 Polyclonal Antibody - Product Information**

Application	WB
Primary Accession	<a href="#">P08123</a>
Reactivity	Human
Host	Rabbit
Clonality	Polyclonal

**COL1A2 Polyclonal Antibody - Additional Information****Gene ID** 1278**Other Names**

COL1A2; Collagen alpha-2(I) chain; Alpha-2 type I collagen

**Dilution**

WB~~Western Blot: 1/500 - 1/2000. Immunohistochemistry: 1/100 - 1/300. Immunofluorescence: 1/200 - 1/1000. ELISA: 1/20000. Not yet tested in other applications.

**Format**

Liquid in PBS containing 50% glycerol, 0.5% BSA and 0.09% (W/V) sodium azide.

**Storage Conditions**

-20°C

**COL1A2 Polyclonal Antibody - Protein Information****Name** COL1A2**Function**

Type I collagen is a member of group I collagen (fibrillar forming collagen).

**Cellular Location**

Secreted, extracellular space, extracellular matrix {ECO:0000255|PROSITE-ProRule:PRU00793}

**Tissue Location**

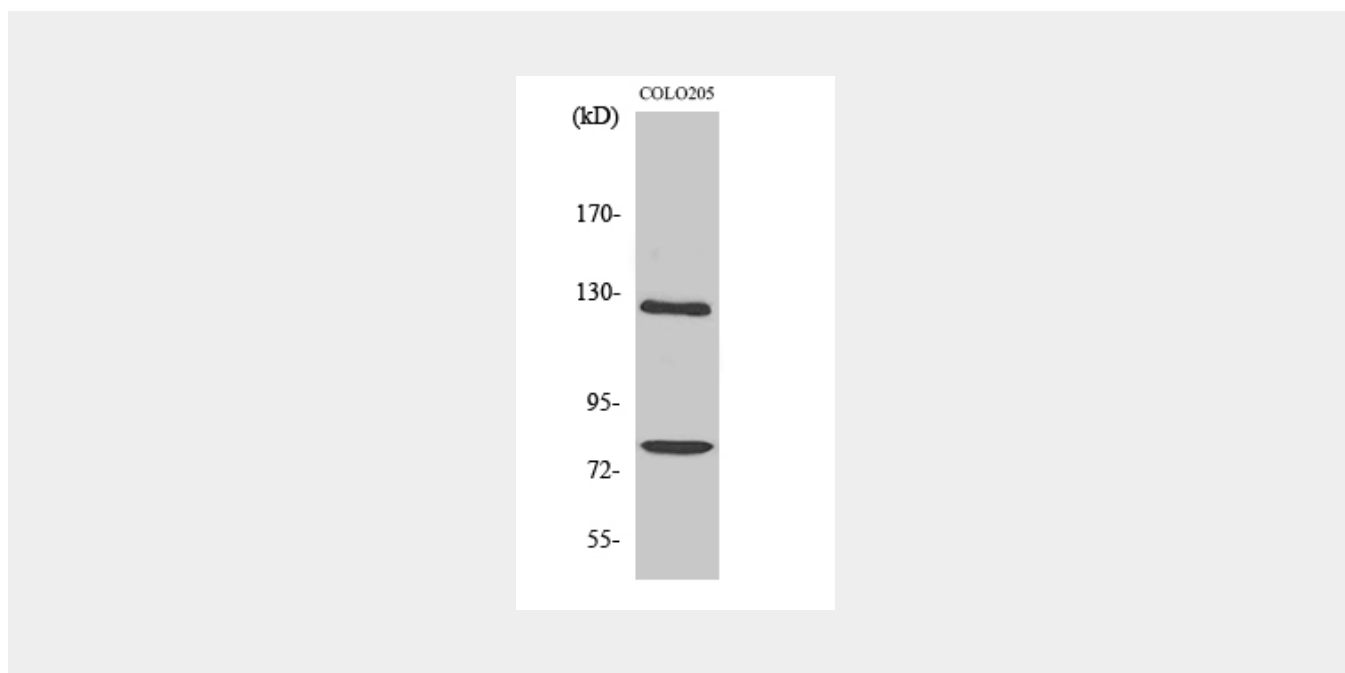
Forms the fibrils of tendon, ligaments and bones. In bones the fibrils are mineralized with calcium hydroxyapatite

**COL1A2 Polyclonal Antibody - Protocols**

Provided below are standard protocols that you may find useful for product applications.

- [Western Blot](#)
- [Blocking Peptides](#)
- [Dot Blot](#)
- [Immunohistochemistry](#)
- [Immunofluorescence](#)
- [Immunoprecipitation](#)
- [Flow Cytometry](#)
- [Cell Culture](#)

### COL1A2 Polyclonal Antibody - Images



### COL1A2 Polyclonal Antibody - Background

Type I collagen is a member of group I collagen (fibrillar forming collagen).