

COL1A2 Polyclonal Antibody
Catalog # AP69201**Specification**

COL1A2 Polyclonal Antibody - Product Information

Application	IHC
Primary Accession	P08123
Reactivity	Human, Mouse, Rat
Host	Rabbit
Clonality	Polyclonal

COL1A2 Polyclonal Antibody - Additional Information**Gene ID** 1278**Other Names**

COL1A2; Collagen alpha-2(I) chain; Alpha-2 type I collagen

Dilution

IHC~~Immunohistochemistry: 1/100 - 1/300. Immunofluorescence: 1/200 - 1/1000. ELISA: 1/10000. Not yet tested in other applications.

Format

Liquid in PBS containing 50% glycerol, 0.5% BSA and 0.09% (W/V) sodium azide.

Storage Conditions

-20°C

COL1A2 Polyclonal Antibody - Protein Information**Name** COL1A2**Function**

Type I collagen is a member of group I collagen (fibrillar forming collagen).

Cellular Location

Secreted, extracellular space, extracellular matrix {ECO:0000255|PROSITE-ProRule:PRU00793}

Tissue Location

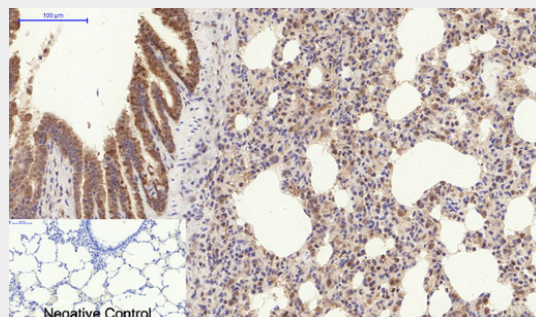
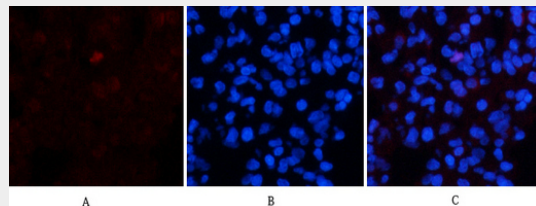
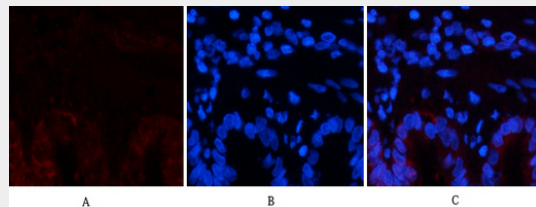
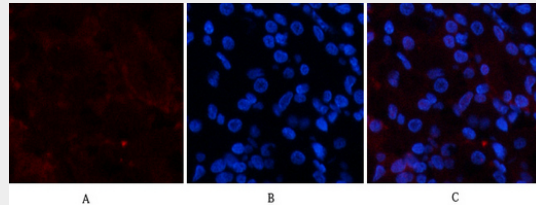
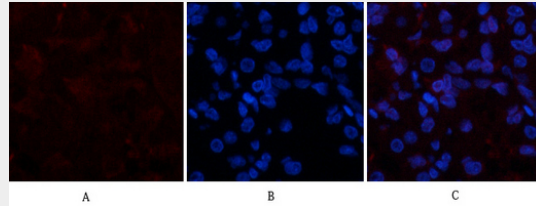
Forms the fibrils of tendon, ligaments and bones. In bones the fibrils are mineralized with calcium hydroxyapatite

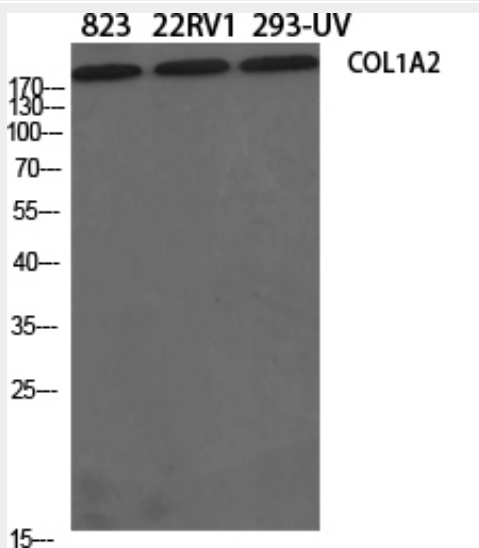
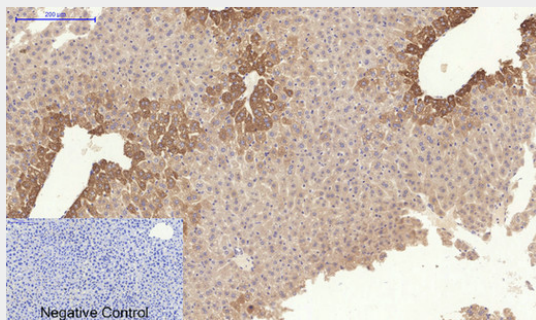
COL1A2 Polyclonal Antibody - Protocols

Provided below are standard protocols that you may find useful for product applications.

- [Western Blot](#)
- [Blocking Peptides](#)
- [Dot Blot](#)
- [Immunohistochemistry](#)
- [Immunofluorescence](#)
- [Immunoprecipitation](#)
- [Flow Cytometry](#)
- [Cell Culture](#)

COL1A2 Polyclonal Antibody - Images





COL1A2 Polyclonal Antibody - Background

Type I collagen is a member of group I collagen (fibrillar forming collagen).