

COL11A1 Polyclonal Antibody
Catalog # AP69191**Specification**

COL11A1 Polyclonal Antibody - Product Information

Application	WB
Primary Accession	P12107
Reactivity	Human, Mouse
Host	Rabbit
Clonality	Polyclonal

COL11A1 Polyclonal Antibody - Additional Information**Gene ID** 1301**Other Names**

COL11A1; COLL6; Collagen alpha-1(XI) chain

Dilution

WB~~Western Blot: 1/500 - 1/2000. Immunohistochemistry: 1/100 - 1/300. Immunofluorescence: 1/200 - 1/1000. ELISA: 1/10000. Not yet tested in other applications.

Format

Liquid in PBS containing 50% glycerol, 0.5% BSA and 0.09% (W/V) sodium azide.

Storage Conditions

-20°C

COL11A1 Polyclonal Antibody - Protein Information**Name** COL11A1**Synonyms** COLL6**Function**

May play an important role in fibrillogenesis by controlling lateral growth of collagen II fibrils.

Cellular Location

Secreted, extracellular space, extracellular matrix {ECO:0000255|PROSITE-ProRule:PRU00793}

Tissue Location

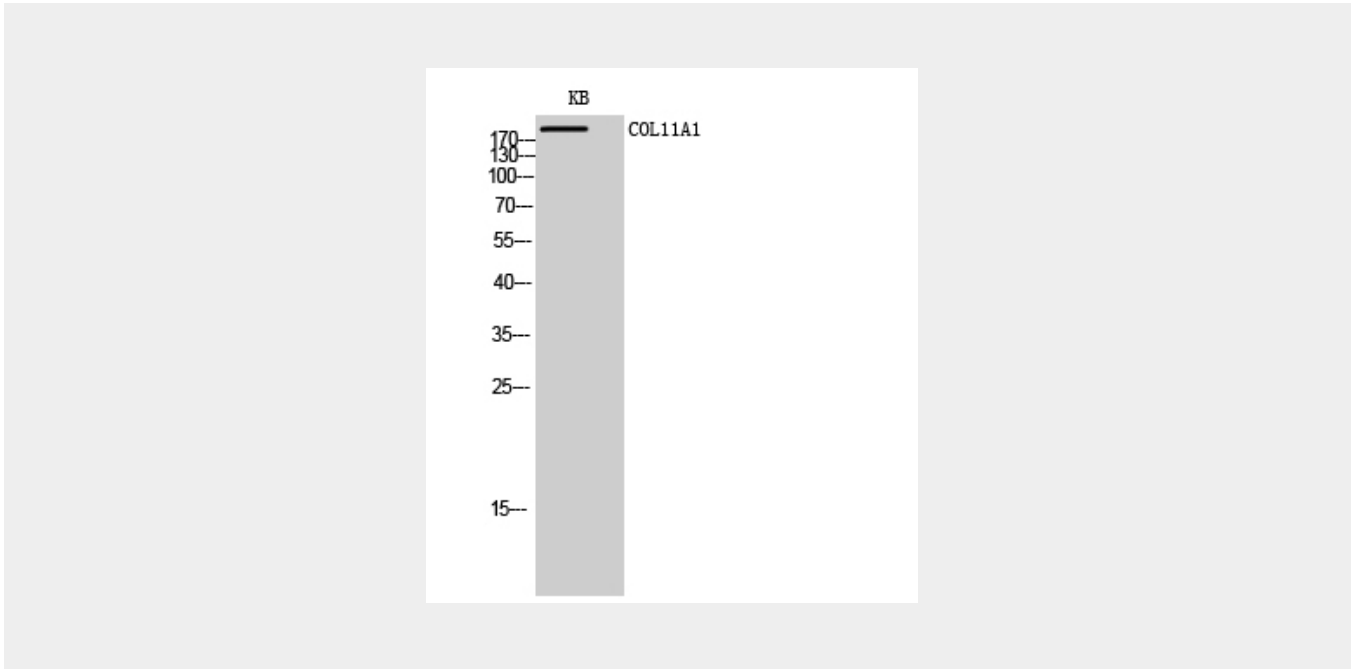
Cartilage, placenta and some tumor or virally transformed cell lines. Isoforms using exon IIA or IIB are found in the cartilage while isoforms using only exon IIB are found in the tendon

COL11A1 Polyclonal Antibody - Protocols

Provided below are standard protocols that you may find useful for product applications.

- [Western Blot](#)
- [Blocking Peptides](#)
- [Dot Blot](#)
- [Immunohistochemistry](#)
- [Immunofluorescence](#)
- [Immunoprecipitation](#)
- [Flow Cytometry](#)
- [Cell Culture](#)

COL11A1 Polyclonal Antibody - Images



COL11A1 Polyclonal Antibody - Background

May play an important role in fibrillogenesis by controlling lateral growth of collagen II fibrils.