

CNPase Polyclonal Antibody
Catalog # AP69186**Specification**

CNPase Polyclonal Antibody - Product Information

Application	WB
Primary Accession	P09543
Reactivity	Human, Mouse, Rat
Host	Rabbit
Clonality	Polyclonal

CNPase Polyclonal Antibody - Additional Information**Gene ID** 1267**Other Names**

CNP; 2'; 3'-cyclic-nucleotide 3'-phosphodiesterase; CNP; CNPase

Dilution

WB~~Western Blot: 1/500 - 1/2000. Immunohistochemistry: 1/100 - 1/300. ELISA: 1/40000. Not yet tested in other applications.

Format

Liquid in PBS containing 50% glycerol, 0.5% BSA and 0.09% (W/V) sodium azide.

Storage Conditions

-20°C

CNPase Polyclonal Antibody - Protein Information**Name** CNP ([HGNC:2158](#))**Function**

Catalyzes the formation of 2'-nucleotide products from 2',3'- cyclic substrates (By similarity). May participate in RNA metabolism in the myelinating cell, CNP is the third most abundant protein in central nervous system myelin (By similarity).

Cellular Location

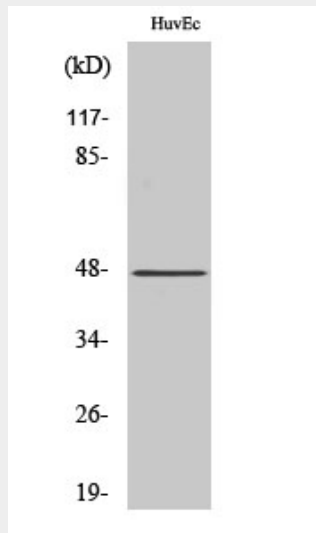
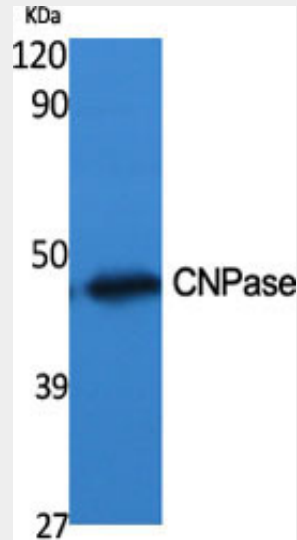
Membrane {ECO:0000250|UniProtKB:P16330}; Lipid- anchor {ECO:0000250|UniProtKB:P16330}. Melanosome. Note=Firmly bound to membrane structures of brain white matter. {ECO:0000250|UniProtKB:P16330}

CNPase Polyclonal Antibody - Protocols

Provided below are standard protocols that you may find useful for product applications.

- [Western Blot](#)
- [Blocking Peptides](#)
- [Dot Blot](#)
- [Immunohistochemistry](#)
- [Immunofluorescence](#)
- [Immunoprecipitation](#)
- [Flow Cytometry](#)
- [Cell Culture](#)

CNPase Polyclonal Antibody - Images



CNPase Polyclonal Antibody - Background

May participate in RNA metabolism in the myelinating cell, CNP is the third most abundant protein in central nervous system myelin.