

**CLN5 Polyclonal Antibody**  
Catalog # AP69159**Specification****CLN5 Polyclonal Antibody - Product Information**

Application	WB
Primary Accession	<a href="#">O75503</a>
Reactivity	Human, Mouse, Rat
Host	Rabbit
Clonality	Polyclonal

**CLN5 Polyclonal Antibody - Additional Information****Gene ID** 1203**Other Names**

CLN5; Ceroid-lipofuscinosis neuronal protein 5; Protein CLN5

**Dilution**

WB~~Western Blot: 1/500 - 1/2000. ELISA: 1/10000. Not yet tested in other applications.

**Format**

Liquid in PBS containing 50% glycerol, 0.5% BSA and 0.09% (W/V) sodium azide.

**Storage Conditions**

-20°C

**CLN5 Polyclonal Antibody - Protein Information****Name** CLN5**Synonyms** BMPS {ECO:0000303|PubMed:37708259}**Function**

[Bis(monoacylglycero)phosphate synthase CLN5, secreted form]: Catalyzes the synthesis of bis(monoacylglycero)phosphate (BMP) via transacylation of 2 molecules of lysophosphatidylglycerol (LPG) (PubMed:<a href="http://www.uniprot.org/citations/37708259" target="\_blank">37708259</a>). BMP also known as lysobisphosphatidic acid plays a key role in the formation of intraluminal vesicles and in maintaining intracellular cholesterol homeostasis (PubMed:<a href="http://www.uniprot.org/citations/37708259" target="\_blank">37708259</a>). Can use only LPG as the exclusive lysophospholipid acyl donor for base exchange and displays BMP synthase activity towards various LPGs (LPG 14:0, LPG 16:0, LPG 18:0, LPG 18:1) with a higher preference for longer chain lengths (PubMed:<a href="http://www.uniprot.org/citations/37708259" target="\_blank">37708259</a>). Plays a role in influencing the retrograde trafficking of lysosomal sorting receptors SORT1 and IGF2R from the endosomes to the trans-Golgi network by controlling the recruitment of retromer complex to the endosomal membrane (PubMed:<a href="http://www.uniprot.org/citations/22431521" target="\_blank">22431521</a>). Regulates the localization and activation of RAB7A which is

required to recruit the retromer complex to the endosomal membrane (PubMed:<a href="http://www.uniprot.org/citations/22431521" target="\_blank">22431521</a>).

#### Cellular Location

[Bis(monoacylglycero)phosphate synthase CLN5, secreted form]: Lysosome

#### Tissue Location

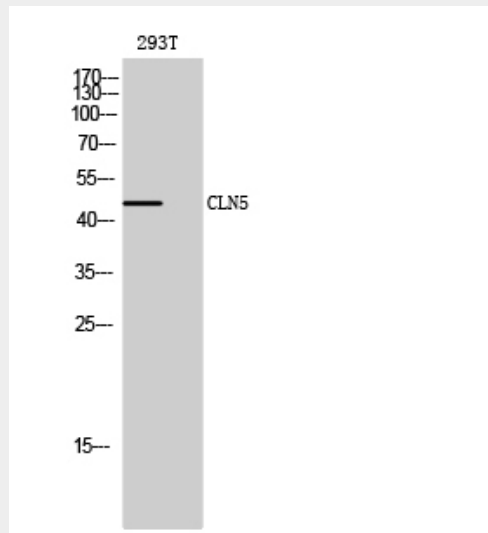
Ubiquitous..

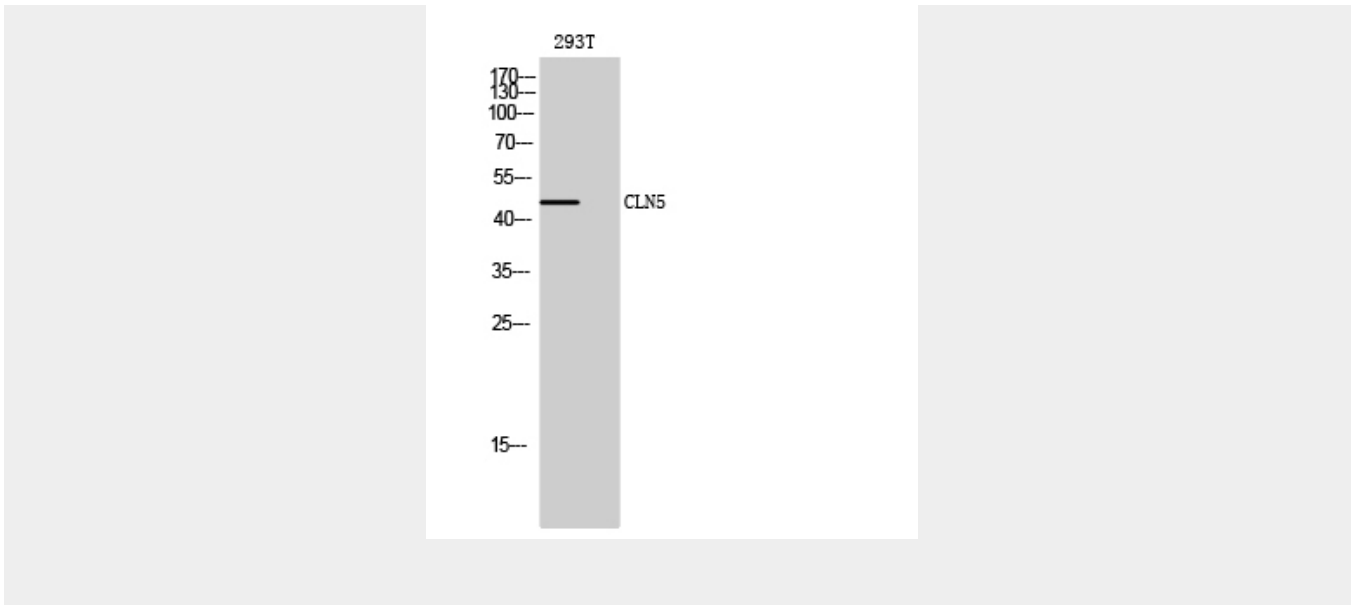
### CLN5 Polyclonal Antibody - Protocols

Provided below are standard protocols that you may find useful for product applications.

- [Western Blot](#)
- [Blocking Peptides](#)
- [Dot Blot](#)
- [Immunohistochemistry](#)
- [Immunofluorescence](#)
- [Immunoprecipitation](#)
- [Flow Cytometry](#)
- [Cell Culture](#)

### CLN5 Polyclonal Antibody - Images





### CLN5 Polyclonal Antibody - Background

Plays a role in influencing the retrograde trafficking of lysosomal sorting receptors SORT1 and IGF2R from the endosomes to the trans-Golgi network by controlling the recruitment of retromer complex to the endosomal membrane. Regulates the localization and activation of RAB7A which is required to recruit the retromer complex to the endosomal membrane (PubMed:22431521).