

CLIP-170 Polyclonal Antibody
Catalog # AP69151**Specification****CLIP-170 Polyclonal Antibody - Product Information**

Application	WB
Primary Accession	P30622
Reactivity	Human, Mouse, Rat
Host	Rabbit
Clonality	Polyclonal

CLIP-170 Polyclonal Antibody - Additional Information**Gene ID** 6249**Other Names**

CLIP1; CYLN1; RSN; CAP-Gly domain-containing linker protein 1; Cytoplasmic linker protein 1; Cytoplasmic linker protein 170 alpha-2; CLIP-170; Reed-Sternberg intermediate filament-associated protein; Restin

Dilution

WB~~Western Blot: 1/500 - 1/2000. ELISA: 1/20000. Not yet tested in other applications.

Format

Liquid in PBS containing 50% glycerol, 0.5% BSA and 0.09% (W/V) sodium azide.

Storage Conditions

-20°C

CLIP-170 Polyclonal Antibody - Protein Information**Name** CLIP1**Synonyms** CYLN1, RSN**Function**

Binds to the plus end of microtubules and regulates the dynamics of the microtubule cytoskeleton. Promotes microtubule growth and microtubule bundling. Links cytoplasmic vesicles to microtubules and thereby plays an important role in intracellular vesicle trafficking. Plays a role macropinocytosis and endosome trafficking.

Cellular Location

Cytoplasm. Cytoplasm, cytoskeleton. Cytoplasmic vesicle membrane; Peripheral membrane protein; Cytoplasmic side. Cell projection, ruffle. Note=Localizes to microtubule plus ends (PubMed:17889670, PubMed:21646404). Localizes preferentially to the ends of tyrosinated microtubules (By similarity). Accumulates in plasma membrane regions with ruffling and protrusions. Associates with the membranes of intermediate macropinocytic vesicles (PubMed:12433698) {ECO:0000250|UniProtKB:Q922J3, ECO:0000269|PubMed:12433698,

ECO:0000269|PubMed:17889670, ECO:0000269|PubMed:21646404}

Tissue Location

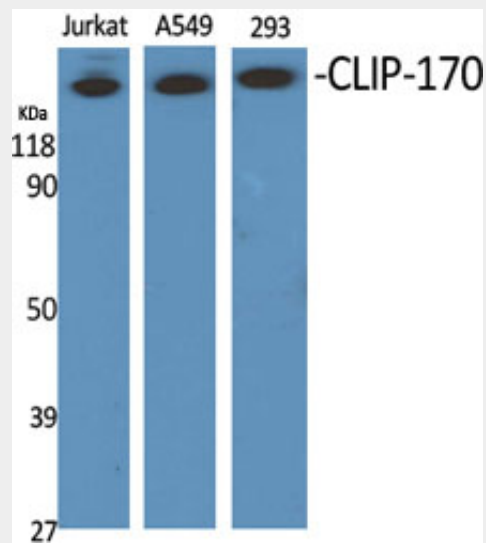
Detected in dendritic cells (at protein level). Highly expressed in the Reed-Sternberg cells of Hodgkin disease

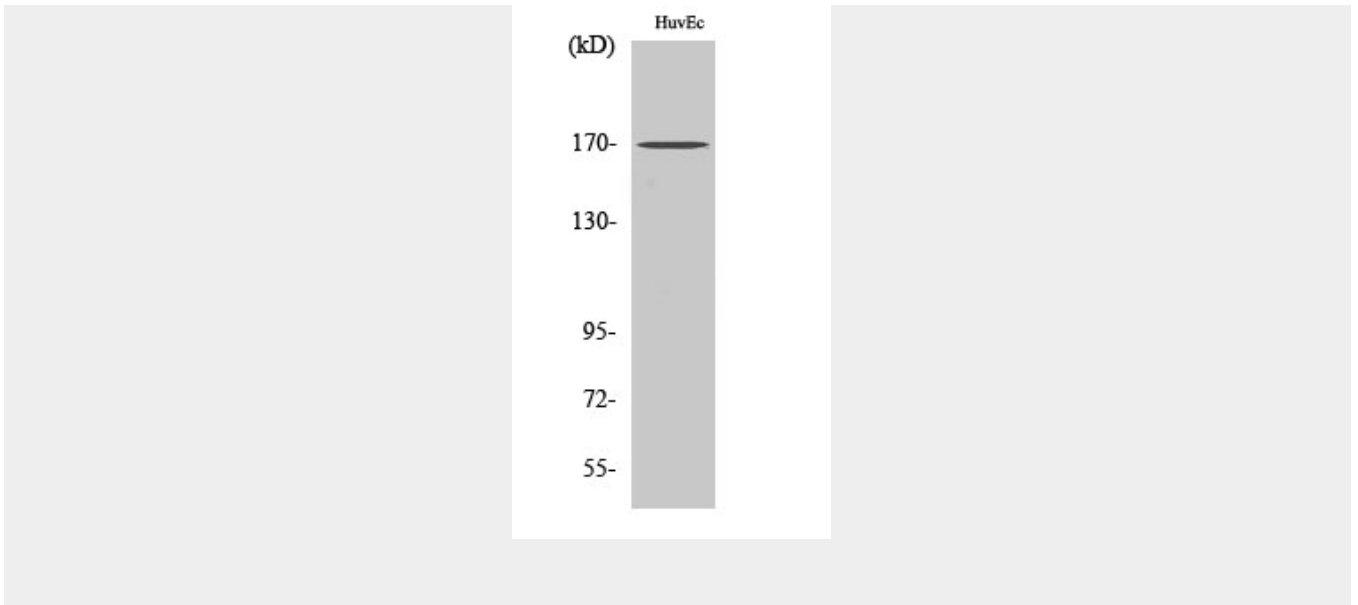
CLIP-170 Polyclonal Antibody - Protocols

Provided below are standard protocols that you may find useful for product applications.

- [Western Blot](#)
- [Blocking Peptides](#)
- [Dot Blot](#)
- [Immunohistochemistry](#)
- [Immunofluorescence](#)
- [Immunoprecipitation](#)
- [Flow Cytometry](#)
- [Cell Culture](#)

CLIP-170 Polyclonal Antibody - Images





CLIP-170 Polyclonal Antibody - Background

Binds to the plus end of microtubules and regulates the dynamics of the microtubule cytoskeleton. Promotes microtubule growth and microtubule bundling. Links cytoplasmic vesicles to microtubules and thereby plays an important role in intracellular vesicle trafficking. Plays a role macropinocytosis and endosome trafficking.