

Claudin-6 Polyclonal Antibody
Catalog # AP69138**Specification**

Claudin-6 Polyclonal Antibody - Product Information

Application	WB
Primary Accession	P56747
Reactivity	Human
Host	Rabbit
Clonality	Polyclonal

Claudin-6 Polyclonal Antibody - Additional Information**Gene ID** 9074**Other Names**

CLDN6; Claudin-6; Skullin

Dilution

WB~Western Blot: 1/500 - 1/2000. Immunohistochemistry: 1/100 - 1/300. Immunofluorescence: 1/200 - 1/1000. ELISA: 1/40000. Not yet tested in other applications.

Format

Liquid in PBS containing 50% glycerol, 0.5% BSA and 0.09% (W/V) sodium azide.

Storage Conditions

-20°C

Claudin-6 Polyclonal Antibody - Protein Information**Name** CLDN6**Function**

Plays a major role in tight junction-specific obliteration of the intercellular space.

Cellular Location

Cell junction, tight junction {ECO:0000250|UniProtKB:Q9Z262}. Cell membrane; Multi-pass membrane protein

Tissue Location

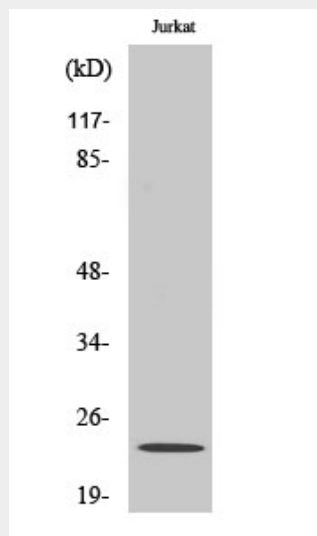
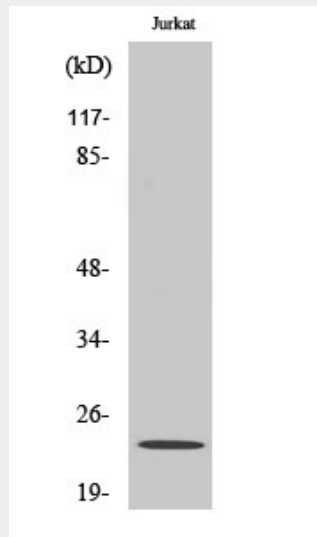
Expressed in the liver, in peripheral blood mononuclear cells and hepatocarcinoma cell lines

Claudin-6 Polyclonal Antibody - Protocols

Provided below are standard protocols that you may find useful for product applications.

- [Western Blot](#)
- [Blocking Peptides](#)
- [Dot Blot](#)
- [Immunohistochemistry](#)
- [Immunofluorescence](#)
- [Immunoprecipitation](#)
- [Flow Cytometry](#)
- [Cell Culture](#)

Claudin-6 Polyclonal Antibody - Images



Claudin-6 Polyclonal Antibody - Background

Plays a major role in tight junction-specific obliteration of the intercellular space.