

**Claudin-3 Polyclonal Antibody**  
Catalog # AP69132**Specification**

---

**Claudin-3 Polyclonal Antibody - Product Information**

Application	WB
Primary Accession	<a href="#">O15551</a>
Reactivity	Human, Mouse, Rat
Host	Rabbit
Clonality	Polyclonal

**Claudin-3 Polyclonal Antibody - Additional Information****Gene ID** 1365**Other Names**

CLDN3; C7orf1; CPETR2; Claudin-3; Clostridium perfringens enterotoxin receptor 2; CPE-R 2; CPE-receptor 2; Rat ventral prostate.1 protein homolog; hRVP1

**Dilution**

WB~~Western Blot: 1/500 - 1/2000. Immunohistochemistry: 1/100 - 1/300. Immunofluorescence: 1/200 - 1/1000. ELISA: 1/40000. Not yet tested in other applications.

**Format**

Liquid in PBS containing 50% glycerol, 0.5% BSA and 0.09% (W/V) sodium azide.

**Storage Conditions**

-20°C

**Claudin-3 Polyclonal Antibody - Protein Information****Name** CLDN3**Synonyms** C7orf1, CPETR2**Function**

Barrier-forming claudin. Plays a major role in tight junction-specific obliteration of the intercellular space, through calcium-independent cell-adhesion activity.

**Cellular Location**

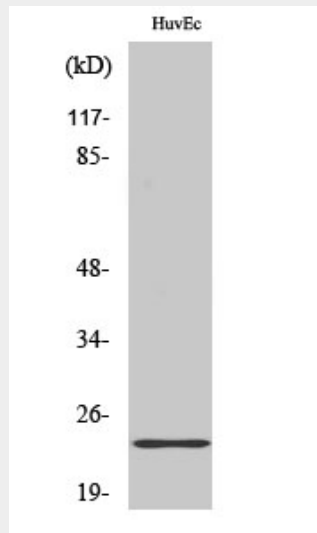
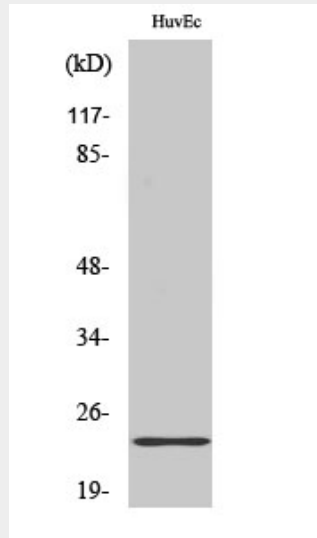
Cell junction, tight junction. Cell membrane; Multi-pass membrane protein

**Claudin-3 Polyclonal Antibody - Protocols**

Provided below are standard protocols that you may find useful for product applications.

- [Western Blot](#)
- [Blocking Peptides](#)
- [Dot Blot](#)
- [Immunohistochemistry](#)
- [Immunofluorescence](#)
- [Immunoprecipitation](#)
- [Flow Cytometry](#)
- [Cell Culture](#)

### Claudin-3 Polyclonal Antibody - Images



### Claudin-3 Polyclonal Antibody - Background

Plays a major role in tight junction-specific obliteration of the intercellular space, through calcium-independent cell-adhesion activity.