

Claudin-3 Polyclonal Antibody
Catalog # AP69131**Specification**

Claudin-3 Polyclonal Antibody - Product Information

Application	WB
Primary Accession	O15551
Reactivity	Human
Host	Rabbit
Clonality	Polyclonal

Claudin-3 Polyclonal Antibody - Additional Information**Gene ID** 1365**Other Names**

CLDN3; C7orf1; CPETR2; Claudin-3; Clostridium perfringens enterotoxin receptor 2; CPE-R 2; CPE-receptor 2; Rat ventral prostate.1 protein homolog; hRVP1

Dilution

WB~~Western Blot: 1/500 - 1/2000. Immunohistochemistry: 1/100 - 1/300. ELISA: 1/5000. Not yet tested in other applications.

Format

Liquid in PBS containing 50% glycerol, 0.5% BSA and 0.09% (W/V) sodium azide.

Storage Conditions

-20°C

Claudin-3 Polyclonal Antibody - Protein Information**Name** CLDN3**Synonyms** C7orf1, CPETR2**Function**

Barrier-forming claudin. Plays a major role in tight junction-specific obliteration of the intercellular space, through calcium-independent cell-adhesion activity.

Cellular Location

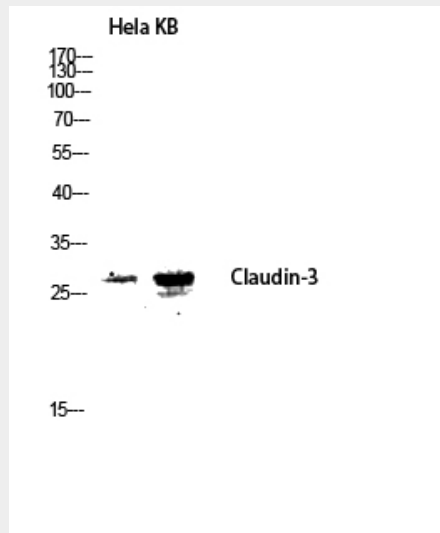
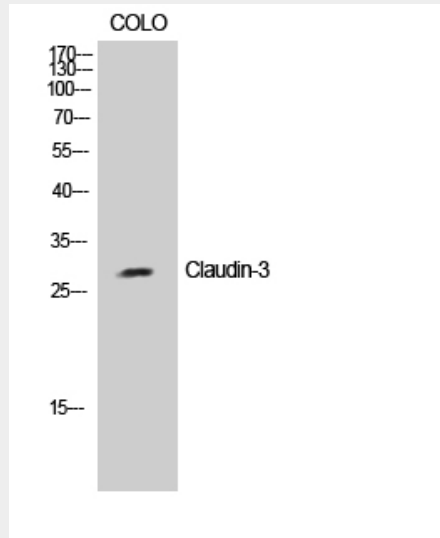
Cell junction, tight junction. Cell membrane; Multi-pass membrane protein

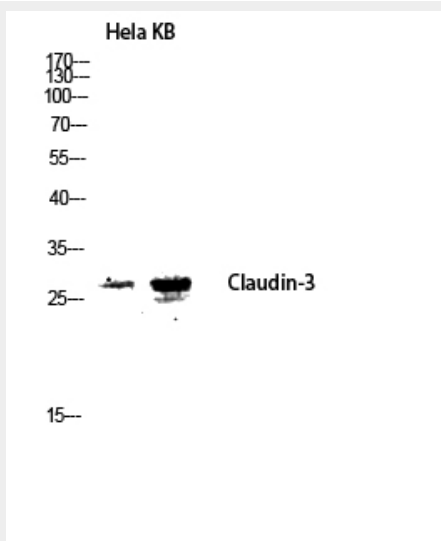
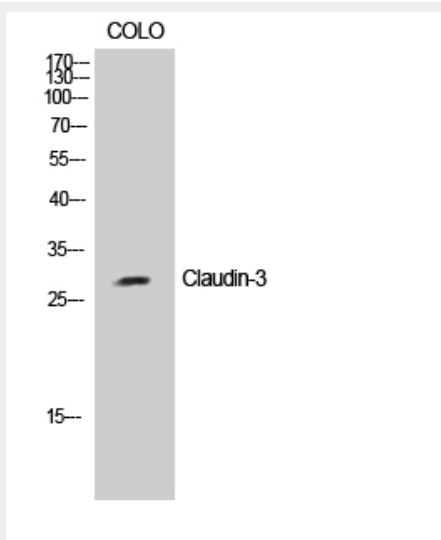
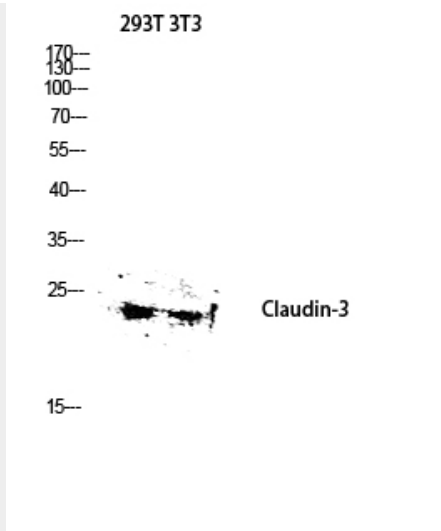
Claudin-3 Polyclonal Antibody - Protocols

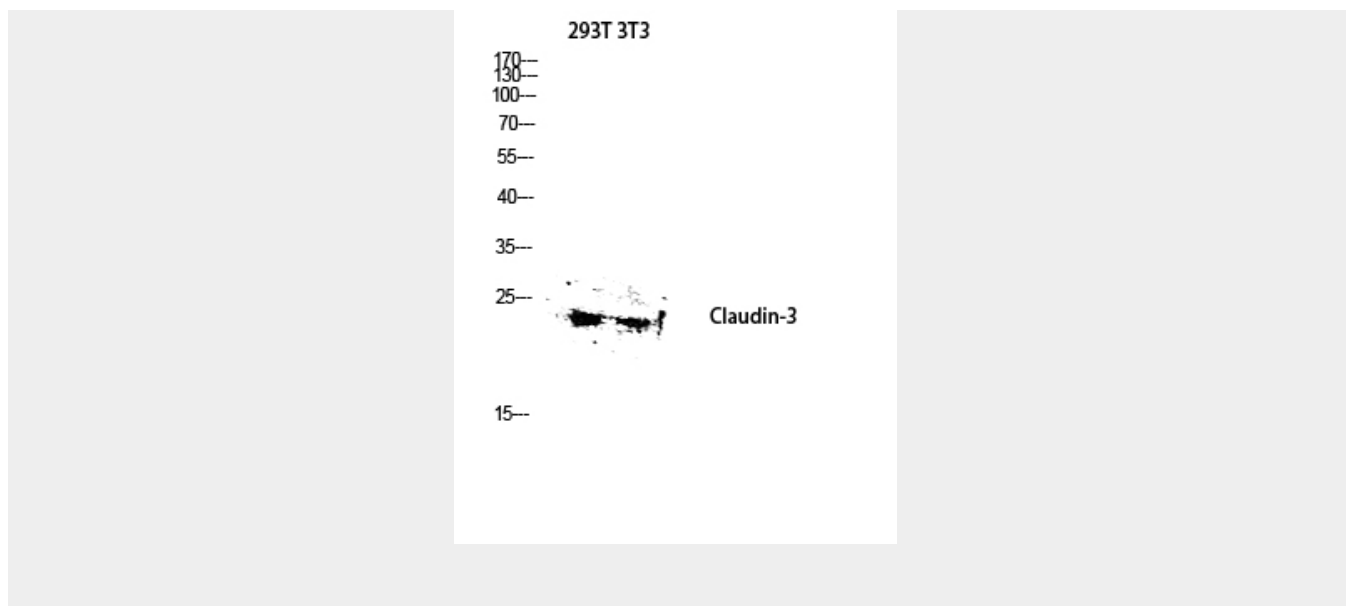
Provided below are standard protocols that you may find useful for product applications.

- [Western Blot](#)
- [Blocking Peptides](#)
- [Dot Blot](#)
- [Immunohistochemistry](#)
- [Immunofluorescence](#)
- [Immunoprecipitation](#)
- [Flow Cytometry](#)
- [Cell Culture](#)

Claudin-3 Polyclonal Antibody - Images







Claudin-3 Polyclonal Antibody - Background

Plays a major role in tight junction-specific obliteration of the intercellular space, through calcium-independent cell-adhesion activity.