

Cks1 Polyclonal Antibody
Catalog # AP69122**Specification**

Cks1 Polyclonal Antibody - Product Information

Application	WB
Primary Accession	P61024
Reactivity	Human, Mouse
Host	Rabbit
Clonality	Polyclonal

Cks1 Polyclonal Antibody - Additional Information**Gene ID** 1163**Other Names**

CKS1B; CKS1; PNAS-143; PNAS-16; Cyclin-dependent kinases regulatory subunit 1; CKS-1

Dilution

WB~~Western Blot: 1/500 - 1/2000. Immunofluorescence: 1/200 - 1/1000. ELISA: 1/20000. Not yet tested in other applications.

Format

Liquid in PBS containing 50% glycerol, 0.5% BSA and 0.09% (W/V) sodium azide.

Storage Conditions

-20°C

Cks1 Polyclonal Antibody - Protein Information**Name** CKS1B**Synonyms** CKS1**Function**

Binds to the catalytic subunit of the cyclin dependent kinases and is essential for their biological function.

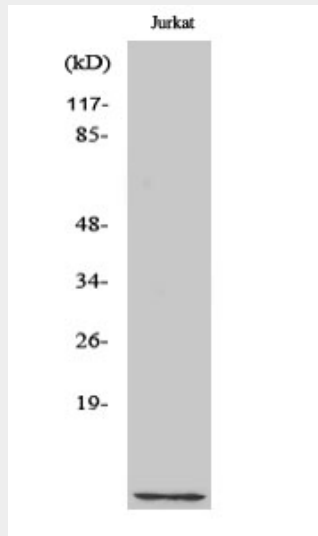
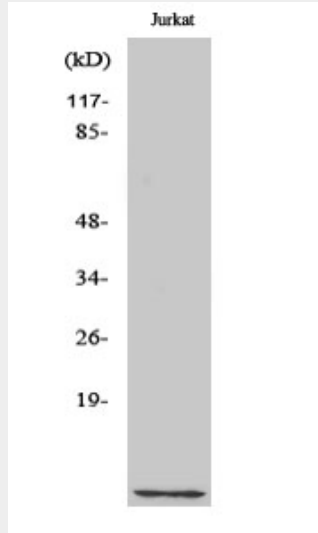
Cks1 Polyclonal Antibody - Protocols

Provided below are standard protocols that you may find useful for product applications.

- [Western Blot](#)
- [Blocking Peptides](#)
- [Dot Blot](#)
- [Immunohistochemistry](#)

- [Immunofluorescence](#)
- [Immunoprecipitation](#)
- [Flow Cytometry](#)
- [Cell Culture](#)

Cks1 Polyclonal Antibody - Images



Cks1 Polyclonal Antibody - Background

Binds to the catalytic subunit of the cyclin dependent kinases and is essential for their biological function.