

**CKR-7 Polyclonal Antibody**  
Catalog # AP69121**Specification**

---

**CKR-7 Polyclonal Antibody - Product Information**

Application	WB
Primary Accession	<a href="#">P32248</a>
Reactivity	Human, Monkey
Host	Rabbit
Clonality	Polyclonal

**CKR-7 Polyclonal Antibody - Additional Information****Gene ID** 1236**Other Names**

CCR7; CMKBR7; EBI1; EVI1; C-C chemokine receptor type 7; C-C CKR-7; CC-CKR-7; CCR-7; BLR2; CDw197; Epstein-Barr virus-induced G-protein coupled receptor 1; EBI1; EBV-induced G-protein coupled receptor 1; MIP-3 beta receptor; CD antigen CD19

**Dilution**

WB~~Western Blot: 1/500 - 1/2000. Immunofluorescence: 1/200 - 1/1000. ELISA: 1/40000. Not yet tested in other applications.

**Format**

Liquid in PBS containing 50% glycerol, 0.5% BSA and 0.09% (W/V) sodium azide.

**Storage Conditions**

-20°C

**CKR-7 Polyclonal Antibody - Protein Information****Name** CCR7**Synonyms** CMKBR7, EBI1, EVI1**Function**

Receptor for the MIP-3-beta chemokine. Probable mediator of EBV effects on B-lymphocytes or of normal lymphocyte functions.

**Cellular Location**

Cell membrane; Multi-pass membrane protein.

**Tissue Location**

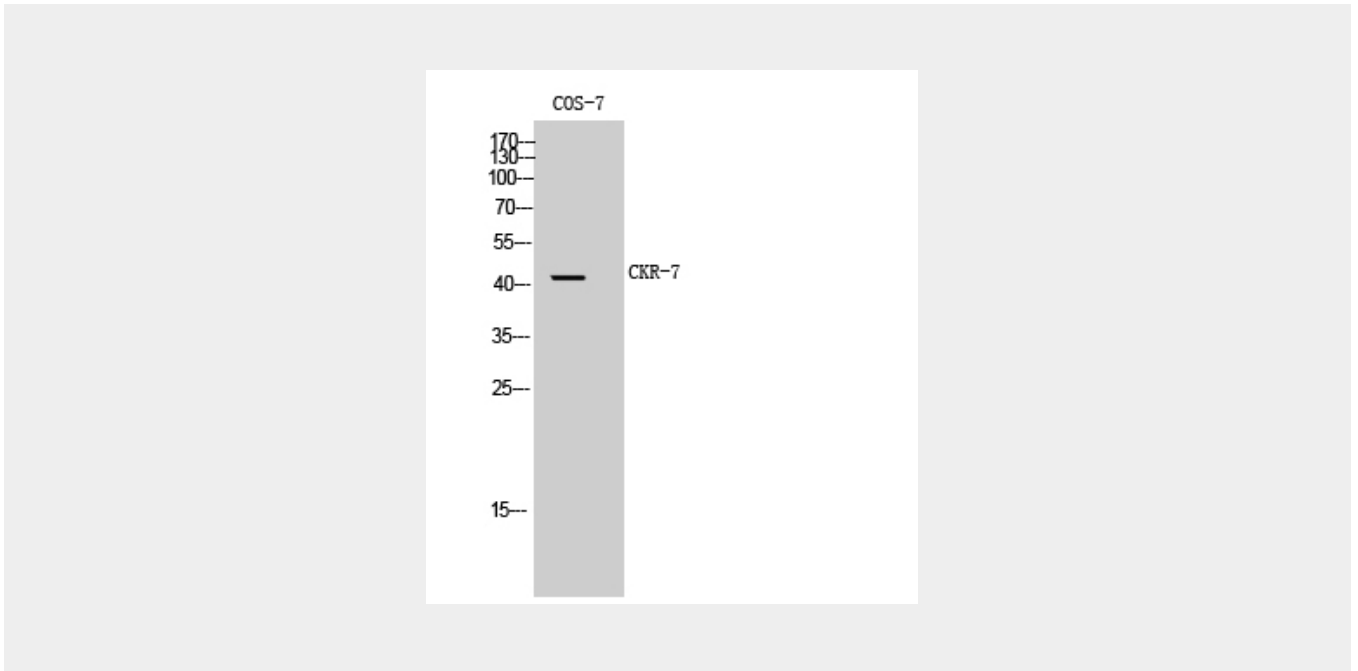
Expressed in various lymphoid tissues and activated B- and T-lymphocytes, strongly up-regulated in B-cells infected with Epstein-Barr virus and T-cells infected with herpesvirus 6 or 7

## CKR-7 Polyclonal Antibody - Protocols

Provided below are standard protocols that you may find useful for product applications.

- [Western Blot](#)
- [Blocking Peptides](#)
- [Dot Blot](#)
- [Immunohistochemistry](#)
- [Immunofluorescence](#)
- [Immunoprecipitation](#)
- [Flow Cytometry](#)
- [Cell Culture](#)

## CKR-7 Polyclonal Antibody - Images



## CKR-7 Polyclonal Antibody - Background

Receptor for the MIP-3-beta chemokine. Probable mediator of EBV effects on B-lymphocytes or of normal lymphocyte functions.