

Choactase Polyclonal Antibody
Catalog # AP69092**Specification**

Choactase Polyclonal Antibody - Product Information

Application	WB
Primary Accession	P28329
Reactivity	Human, Mouse, Rat
Host	Rabbit
Clonality	Polyclonal

Choactase Polyclonal Antibody - Additional Information**Gene ID** 1103**Other Names**

CHAT; Choline O-acetyltransferase; CHOACTase; ChAT; Choline acetylase

Dilution

WB~~Western Blot: 1/500 - 1/2000. ELISA: 1/10000. Not yet tested in other applications.

Format

Liquid in PBS containing 50% glycerol, 0.5% BSA and 0.09% (W/V) sodium azide.

Storage Conditions

-20°C

Choactase Polyclonal Antibody - Protein Information**Name** CHAT**Function**

Catalyzes the reversible synthesis of acetylcholine (ACh) from acetyl CoA and choline at cholinergic synapses.

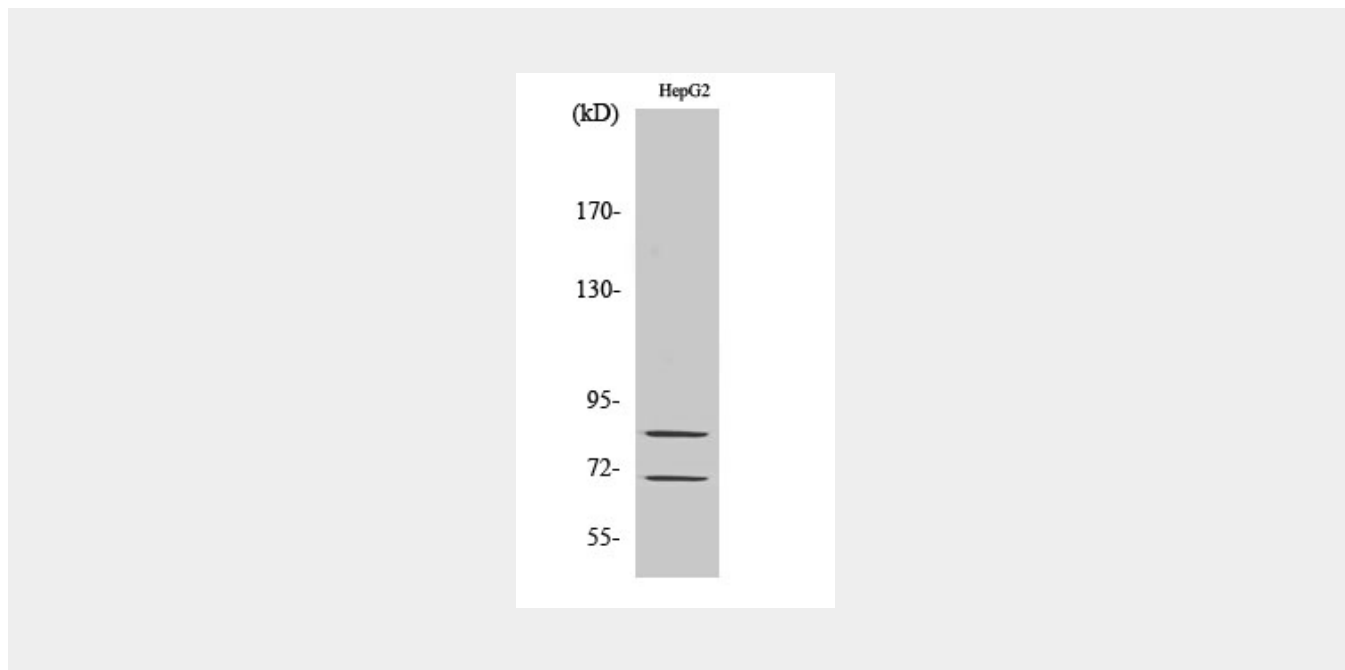
Choactase Polyclonal Antibody - Protocols

Provided below are standard protocols that you may find useful for product applications.

- [Western Blot](#)
- [Blocking Peptides](#)
- [Dot Blot](#)
- [Immunohistochemistry](#)
- [Immunofluorescence](#)
- [Immunoprecipitation](#)
- [Flow Cytometry](#)

- [Cell Culture](#)

Choactase Polyclonal Antibody - Images



Choactase Polyclonal Antibody - Background

Catalyzes the reversible synthesis of acetylcholine (ACh) from acetyl CoA and choline at cholinergic synapses.