

Cerebellin 1 Polyclonal Antibody
Catalog # AP69051**Specification****Cerebellin 1 Polyclonal Antibody - Product Information**

Application	WB
Primary Accession	P23435
Reactivity	Human, Mouse, Rat
Host	Rabbit
Clonality	Polyclonal

Cerebellin 1 Polyclonal Antibody - Additional Information**Gene ID** 869**Other Names**

CBLN1; Cerebellin-1; Precerebellin

Dilution

WB~~Western Blot: 1/500 - 1/2000. ELISA: 1/10000. Not yet tested in other applications.

Format

Liquid in PBS containing 50% glycerol, 0.5% BSA and 0.09% (W/V) sodium azide.

Storage Conditions

-20°C

Cerebellin 1 Polyclonal Antibody - Protein Information**Name** CBLN1**Function**

Required for synapse integrity and synaptic plasticity. During cerebellar synapse formation, essential for the matching and maintenance of pre- and post-synaptic elements at parallel fiber-Purkinje cell synapses, the establishment of the proper pattern of climbing fiber-Purkinje cell innervation, and induction of long-term depression at parallel fiber-Purkinje cell synapses. Plays a role as a synaptic organizer that acts bidirectionally on both pre- and post-synaptic components. On the one hand induces accumulation of synaptic vesicles in the pre-synaptic part by binding with NRXN1 and in other hand induces clustering of GRID2 and its associated proteins at the post-synaptic site through association of GRID2. NRXN1-CBLN1-GRID2 complex directly induces parallel fiber protrusions that encapsulate spines of Purkinje cells leading to accumulation of GRID2 and synaptic vesicles. Required for CBLN3 export from the endoplasmic reticulum and secretion (By similarity). NRXN1-CBLN1-GRID2 complex mediates the D- Serine-dependent long term depression signals and AMPA receptor endocytosis (PubMed:27418511). Essential for long-term maintenance but not establishment of excitatory synapses (By similarity). Inhibits the formation and function of inhibitory GABAergic synapses in cerebellar Purkinje cells (By similarity).

Cellular Location

Secreted {ECO:0000250|UniProtKB:Q9R171}. Postsynaptic cell membrane {ECO:0000250|UniProtKB:Q9R171}

Tissue Location

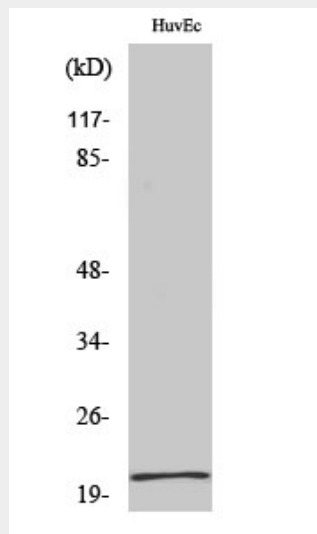
In the Purkinje cells postsynaptic structures. In the cerebellum, cerebellin is much less abundant than [des-Ser1]- cerebellin

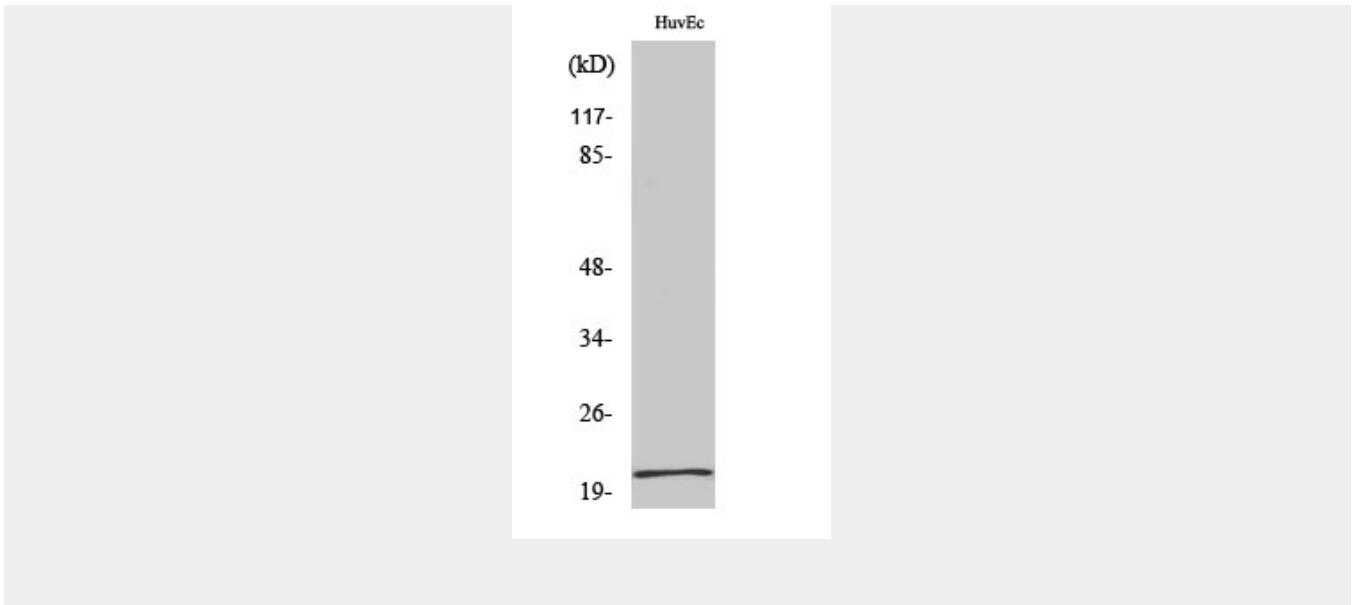
Cerebellin 1 Polyclonal Antibody - Protocols

Provided below are standard protocols that you may find useful for product applications.

- [Western Blot](#)
- [Blocking Peptides](#)
- [Dot Blot](#)
- [Immunohistochemistry](#)
- [Immunofluorescence](#)
- [Immunoprecipitation](#)
- [Flow Cytometry](#)
- [Cell Culture](#)

Cerebellin 1 Polyclonal Antibody - Images





Cerebellin 1 Polyclonal Antibody - Background

Required for synapse integrity and synaptic plasticity. During cerebellar synapse formation, essential for the matching and maintenance of pre- and post-synaptic elements at parallel fiber-Purkinje cell synapses, the establishment of the proper pattern of climbing fiber-Purkinje cell innervation, and induction of long-term depression at parallel fiber-Purkinje cell synapses. Plays a role as a synaptic organizer that acts bidirectionally on both pre- and post-synaptic components. On the one hand induces accumulation of synaptic vesicles in the pre-synaptic part by binding with NRXN1 and in other hand induces clustering of GRID2 and its associated proteins at the post-synaptic site through association of GRID2. NRXN1-CBLN1-GRID2 complex directly induces parallel fiber protrusions that encapsulate spines of Purkinje cells leading to accumulation of GRID2 and synaptic vesicles. Required for CBLN3 export from the endoplasmic reticulum and secretion (By similarity). NRXN1-CBLN1-GRID2 complex mediates the D-Serine-dependent long term depression signals and AMPA receptor endocytosis (PubMed:27418511).