

Centrobins Polyclonal Antibody
Catalog # AP69038**Specification**

Centrobins Polyclonal Antibody - Product Information

Application	WB
Primary Accession	Q8N137
Reactivity	Human
Host	Rabbit
Clonality	Polyclonal

Centrobins Polyclonal Antibody - Additional Information**Gene ID** 116840**Other Names**

CNTROB; LIP8; PP1221; Centrobins; Centrosomal BRCA2-interacting protein; LYST-interacting protein 8

Dilution

WB~~Western Blot: 1/500 - 1/2000. Immunohistochemistry: 1/100 - 1/300. ELISA: 1/5000. Not yet tested in other applications.

Format

Liquid in PBS containing 50% glycerol, 0.5% BSA and 0.09% (W/V) sodium azide.

Storage Conditions

-20°C

Centrobins Polyclonal Antibody - Protein Information**Name** CNTROB**Synonyms** LIP8**Function**

Required for centriole duplication. Inhibition of centriole duplication leading to defects in cytokinesis.

Cellular LocationCytoplasm, cytoskeleton, microtubule organizing center, centrosome, centriole
Note=Centriole-associated, asymmetrically localizes to the daughter centriole**Tissue Location**

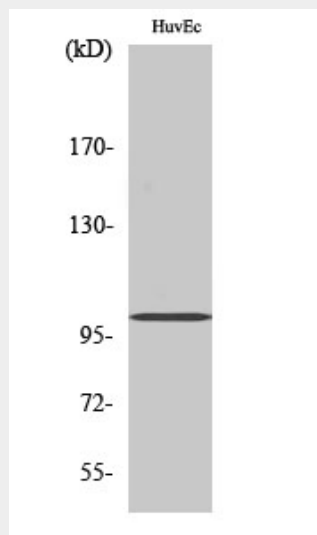
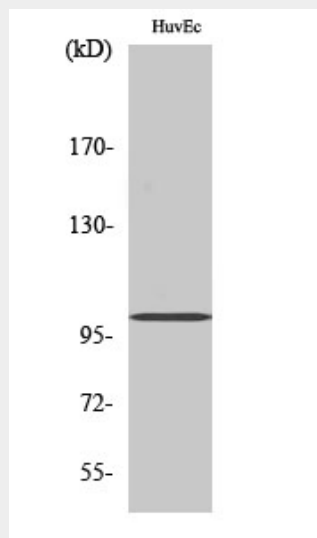
Widely expressed (at protein level). Highly expressed in testis. Also expressed in spleen, thymus, prostate, small intestine, colon and peripheral blood leukocytes

Centrobin Polyclonal Antibody - Protocols

Provided below are standard protocols that you may find useful for product applications.

- [Western Blot](#)
- [Blocking Peptides](#)
- [Dot Blot](#)
- [Immunohistochemistry](#)
- [Immunofluorescence](#)
- [Immunoprecipitation](#)
- [Flow Cytometry](#)
- [Cell Culture](#)

Centrobin Polyclonal Antibody - Images



Centrobin Polyclonal Antibody - Background

Required for centriole duplication. Inhibition of centriole duplication leading to defects in

cytokinesis.