

CdcA3 Polyclonal Antibody
Catalog # AP69002**Specification**

CdcA3 Polyclonal Antibody - Product Information

Application	WB
Primary Accession	Q99618
Reactivity	Human, Mouse, Rat
Host	Rabbit
Clonality	Polyclonal

CdcA3 Polyclonal Antibody - Additional Information**Gene ID** 83461**Other Names**

CDCA3; C8; GRCC8; TOME1; Cell division cycle-associated protein 3; Gene-rich cluster protein C8; Trigger of mitotic entry protein 1; TOME-1

Dilution

WB~~Western Blot: 1/500 - 1/2000. Immunohistochemistry: 1/100 - 1/300. Immunofluorescence: 1/200 - 1/1000. ELISA: 1/5000. Not yet tested in other applications.

Format

Liquid in PBS containing 50% glycerol, 0.5% BSA and 0.09% (W/V) sodium azide.

Storage Conditions

-20°C

CdcA3 Polyclonal Antibody - Protein Information**Name** CDCA3**Synonyms** C8, GRCC8, TOME1**Function**

F-box-like protein which is required for entry into mitosis. Acts by participating in E3 ligase complexes that mediate the ubiquitination and degradation of WEE1 kinase at G2/M phase (By similarity).

Cellular Location

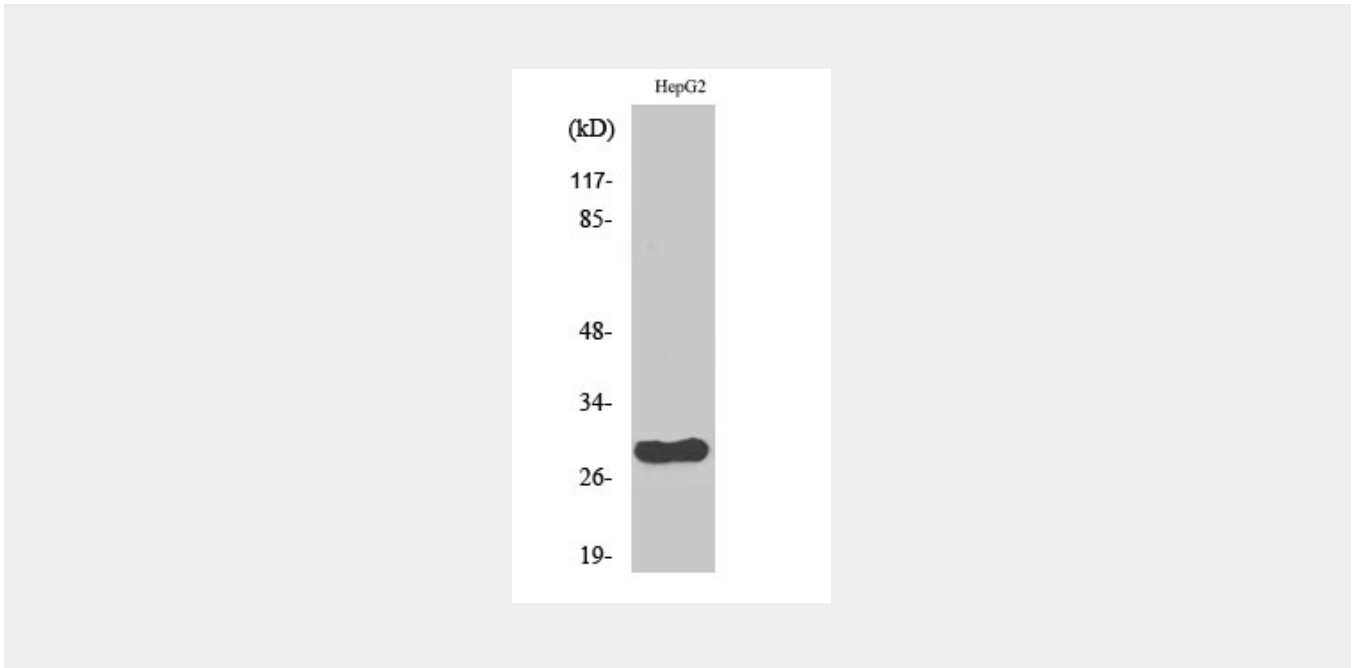
Cytoplasm, cytosol.

CdcA3 Polyclonal Antibody - Protocols

Provided below are standard protocols that you may find useful for product applications.

- [Western Blot](#)
- [Blocking Peptides](#)
- [Dot Blot](#)
- [Immunohistochemistry](#)
- [Immunofluorescence](#)
- [Immunoprecipitation](#)
- [Flow Cytometry](#)
- [Cell Culture](#)

CdcA3 Polyclonal Antibody - Images



CdcA3 Polyclonal Antibody - Background

F-box-like protein which is required for entry into mitosis. Acts by participating in E3 ligase complexes that mediate the ubiquitination and degradation of WEE1 kinase at G2/M phase (By similarity).