

**Cdc7 Polyclonal Antibody**  
Catalog # AP69001**Specification**

---

**Cdc7 Polyclonal Antibody - Product Information**

Application	<b>WB</b>
Primary Accession	<a href="#">O00311</a>
Reactivity	<b>Human</b>
Host	<b>Rabbit</b>
Clonality	<b>Polyclonal</b>

**Cdc7 Polyclonal Antibody - Additional Information****Gene ID** 8317**Other Names**

CDC7; CDC7L1; Cell division cycle 7-related protein kinase; CDC7-related kinase; HsCdc7; huCdc7

**Dilution**

WB~~Western Blot: 1/500 - 1/2000. Immunohistochemistry: 1/100 - 1/300. ELISA: 1/5000. Not yet tested in other applications.

**Format**

Liquid in PBS containing 50% glycerol, 0.5% BSA and 0.09% (W/V) sodium azide.

**Storage Conditions**

-20°C

**Cdc7 Polyclonal Antibody - Protein Information****Name** CDC7 ([HGNC:1745](#))**Synonyms** CDC7L1**Function**

Kinase involved in initiation of DNA replication. Phosphorylates critical substrates that regulate the G1/S phase transition and initiation of DNA replication, such as MCM proteins and CLASPIN.

**Cellular Location**

Nucleus.

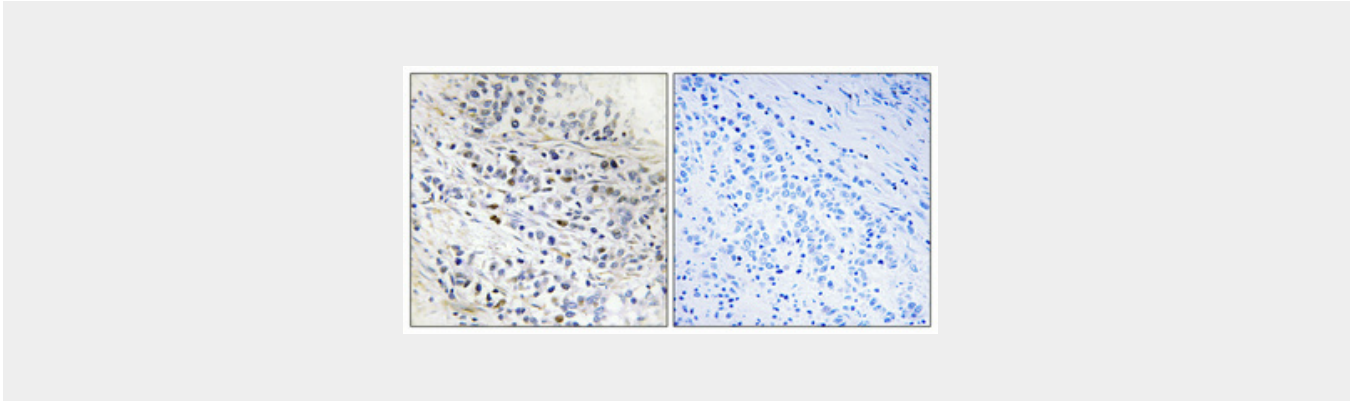
**Cdc7 Polyclonal Antibody - Protocols**

Provided below are standard protocols that you may find useful for product applications.

- [Western Blot](#)

- [Blocking Peptides](#)
- [Dot Blot](#)
- [Immunohistochemistry](#)
- [Immunofluorescence](#)
- [Immunoprecipitation](#)
- [Flow Cytometry](#)
- [Cell Culture](#)

### **Cdc7 Polyclonal Antibody - Images**



### **Cdc7 Polyclonal Antibody - Background**

Seems to phosphorylate critical substrates that regulate the G1/S phase transition and/or DNA replication. Can phosphorylates MCM2 and MCM3.