

**Cdc40 Polyclonal Antibody**  
Catalog # AP68990**Specification**

---

**Cdc40 Polyclonal Antibody - Product Information**

Application	WB
Primary Accession	<a href="#">O60508</a>
Reactivity	Human, Mouse, Rat
Host	Rabbit
Clonality	Polyclonal

**Cdc40 Polyclonal Antibody - Additional Information****Gene ID** 51362**Other Names**

CDC40; EHB3; PRP17; PRPF17; Pre-mRNA-processing factor 17; Cell division cycle 40 homolog; EH-binding protein 3; Ehb3; PRP17 homolog; hPRP17

**Dilution**

WB~~Western Blot: 1/500 - 1/2000. Immunohistochemistry: 1/100 - 1/300. ELISA: 1/40000. Not yet tested in other applications.

**Format**

Liquid in PBS containing 50% glycerol, 0.5% BSA and 0.09% (W/V) sodium azide.

**Storage Conditions**

-20°C

**Cdc40 Polyclonal Antibody - Protein Information****Name** CDC40**Synonyms** EHB3, PRP17, PRPF17**Function**

Required for pre-mRNA splicing as component of the activated spliceosome (PubMed:&lt;a href="http://www.uniprot.org/citations/33220177" target="\_blank"&gt;33220177&lt;/a&gt;). Plays an important role in embryonic brain development; this function does not require proline isomerization (PubMed:&lt;a href="http://www.uniprot.org/citations/33220177" target="\_blank"&gt;33220177&lt;/a&gt;).

**Cellular Location**

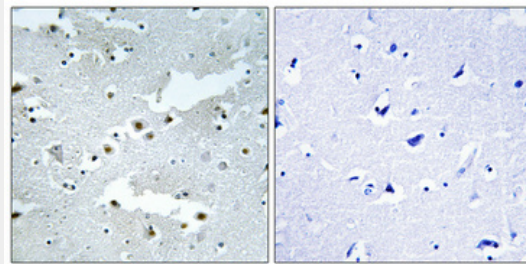
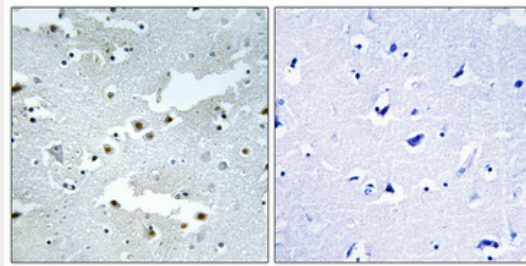
Nucleus. Nucleus speckle

**Cdc40 Polyclonal Antibody - Protocols**

Provided below are standard protocols that you may find useful for product applications.

- [Western Blot](#)
- [Blocking Peptides](#)
- [Dot Blot](#)
- [Immunohistochemistry](#)
- [Immunofluorescence](#)
- [Immunoprecipitation](#)
- [Flow Cytometry](#)
- [Cell Culture](#)

#### **Cdc40 Polyclonal Antibody - Images**



#### **Cdc40 Polyclonal Antibody - Background**

Associates with the spliceosome late in the splicing pathway and may function in the second step of pre-mRNA splicing.