

**Cdc25B Polyclonal Antibody**  
Catalog # AP68981**Specification****Cdc25B Polyclonal Antibody - Product Information**

Application	WB
Primary Accession	<a href="#">P30305</a>
Reactivity	Human
Host	Rabbit
Clonality	Polyclonal

**Cdc25B Polyclonal Antibody - Additional Information****Gene ID** 994**Other Names**

CDC25B; CDC25HU2; M-phase inducer phosphatase 2; Dual specificity phosphatase Cdc25B

**Dilution**

WB~~Western Blot: 1/500 - 1/2000. Immunohistochemistry: 1/100 - 1/300. Immunofluorescence: 1/200 - 1/1000. ELISA: 1/5000. Not yet tested in other applications.

**Format**

Liquid in PBS containing 50% glycerol, 0.5% BSA and 0.09% (W/V) sodium azide.

**Storage Conditions**

-20°C

**Cdc25B Polyclonal Antibody - Protein Information****Name** CDC25B**Synonyms** CDC25HU2**Function**

Tyrosine protein phosphatase which functions as a dosage- dependent inducer of mitotic progression (PubMed:<a href="http://www.uniprot.org/citations/1836978" target="\_blank">1836978</a>, PubMed:<a href="http://www.uniprot.org/citations/20360007" target="\_blank">20360007</a>). Directly dephosphorylates CDK1 and stimulates its kinase activity (PubMed:<a href="http://www.uniprot.org/citations/20360007" target="\_blank">20360007</a>). Required for G2/M phases of the cell cycle progression and abscission during cytokinesis in a ECT2-dependent manner (PubMed:<a href="http://www.uniprot.org/citations/17332740" target="\_blank">17332740</a>). The three isoforms seem to have a different level of activity (PubMed:<a href="http://www.uniprot.org/citations/1836978" target="\_blank">1836978</a>).

**Cellular Location**

Cytoplasm, cytoskeleton, microtubule organizing center, centrosome. Cytoplasm, cytoskeleton,

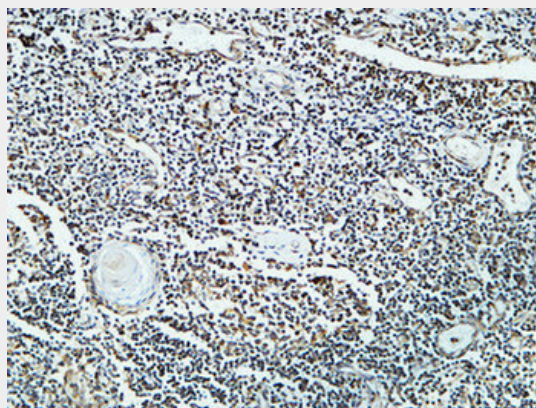
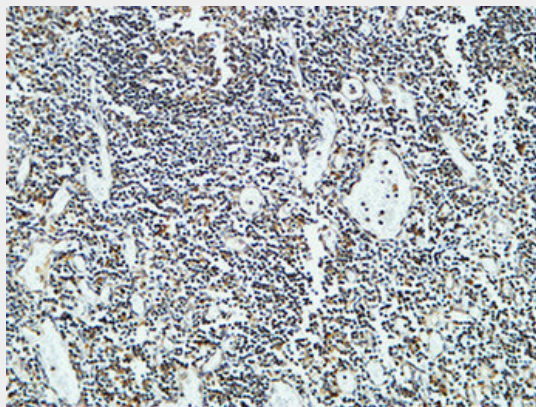
spindle pole

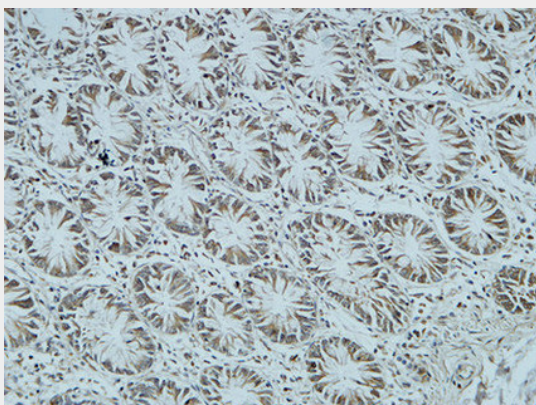
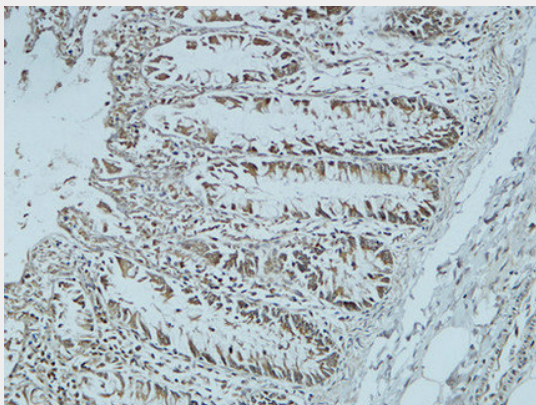
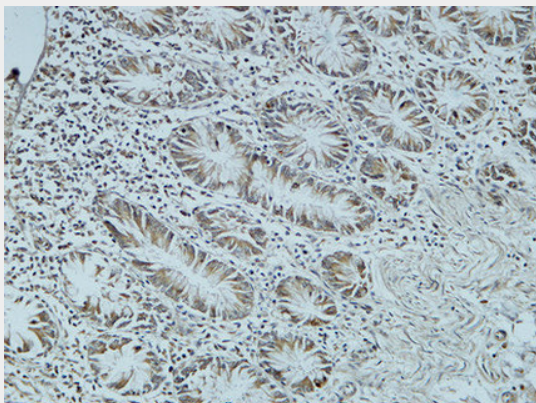
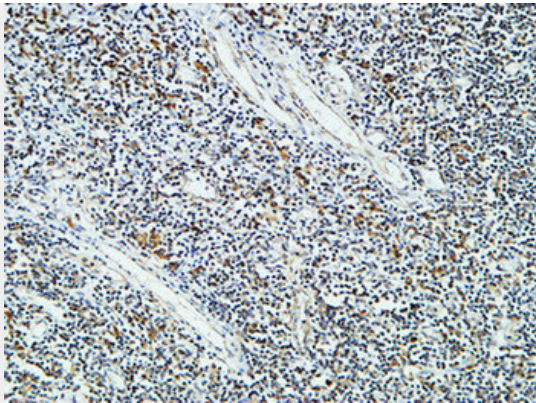
### **Cdc25B Polyclonal Antibody - Protocols**

Provided below are standard protocols that you may find useful for product applications.

- [Western Blot](#)
- [Blocking Peptides](#)
- [Dot Blot](#)
- [Immunohistochemistry](#)
- [Immunofluorescence](#)
- [Immunoprecipitation](#)
- [Flow Cytometry](#)
- [Cell Culture](#)

### **Cdc25B Polyclonal Antibody - Images**





## **Cdc25B Polyclonal Antibody - Background**

Tyrosine protein phosphatase which functions as a dosage-dependent inducer of mitotic progression. Required for G2/M phases of the cell cycle progression and abscission during cytokinesis in a ECT2-dependent manner. Directly dephosphorylates CDK1 and stimulates its kinase activity. The three isoforms seem to have a different level of activity.