

**CD34 Polyclonal Antibody**  
Catalog # AP68940**Specification**

---

**CD34 Polyclonal Antibody - Product Information**

|                   |                        |
|-------------------|------------------------|
| Application       | IHC                    |
| Primary Accession | <a href="#">P28906</a> |
| Reactivity        | Human, Mouse           |
| Host              | Rabbit                 |
| Clonality         | Polyclonal             |

**CD34 Polyclonal Antibody - Additional Information****Gene ID** 947**Other Names**

CD34; Hematopoietic progenitor cell antigen CD34; CD antigen CD34

**Dilution**

IHC~IHC-p: 100-300. Western Blot: 1/500 - 1/2000. ELISA: 1/10000. Not yet tested in other applications.

**Format**

Liquid in PBS containing 50% glycerol, 0.5% BSA and 0.09% (W/V) sodium azide.

**Storage Conditions**

-20°C

**CD34 Polyclonal Antibody - Protein Information****Name** CD34**Function**

Possible adhesion molecule with a role in early hematopoiesis by mediating the attachment of stem cells to the bone marrow extracellular matrix or directly to stromal cells. Could act as a scaffold for the attachment of lineage specific glycans, allowing stem cells to bind to lectins expressed by stromal cells or other marrow components. Presents carbohydrate ligands to selectins.

**Cellular Location**

Membrane; Single-pass type I membrane protein.

**Tissue Location**

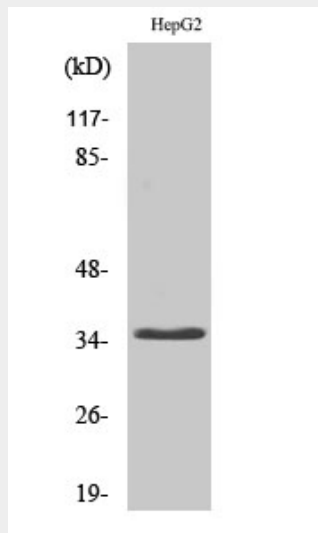
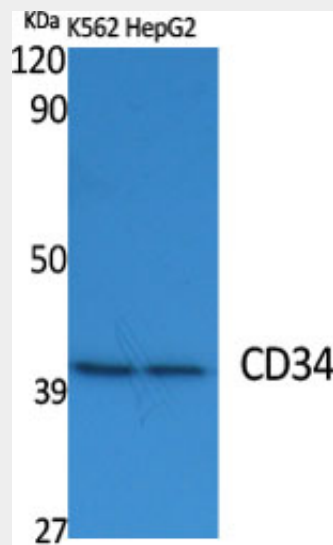
Selectively expressed on hematopoietic progenitor cells and the small vessel endothelium of a variety of tissues

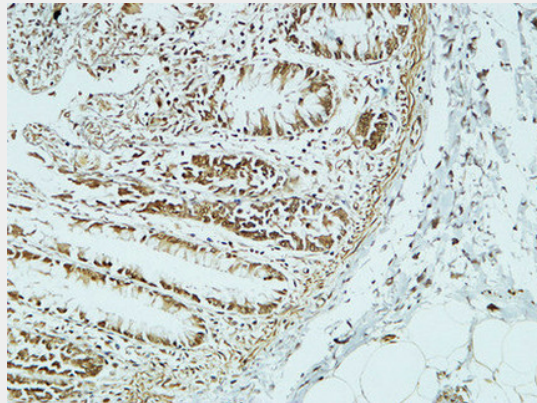
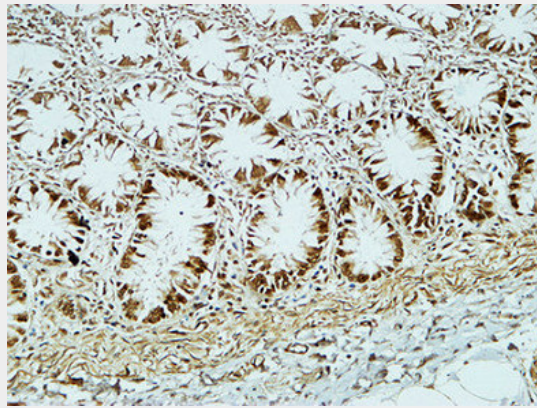
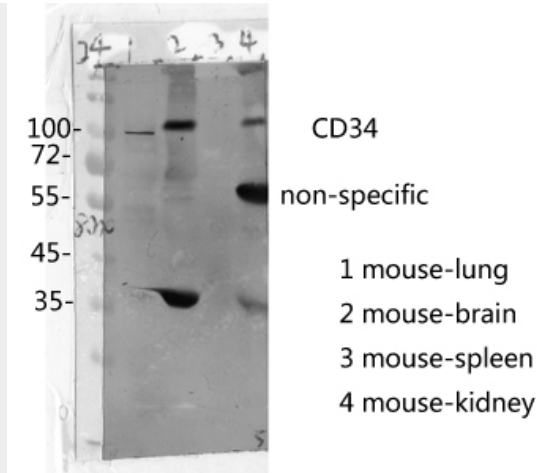
## CD34 Polyclonal Antibody - Protocols

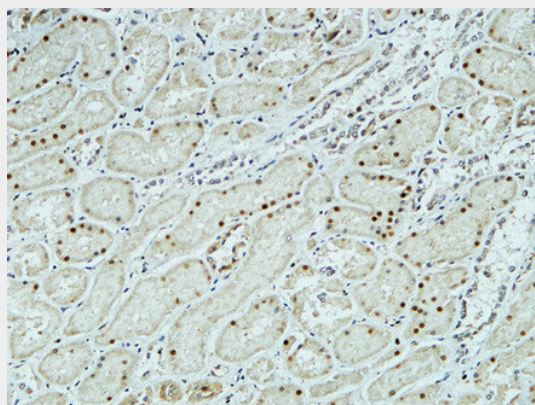
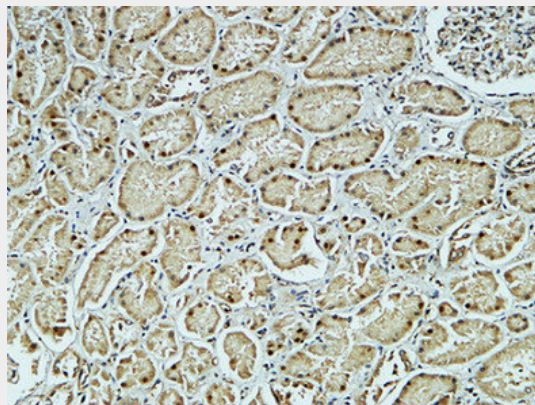
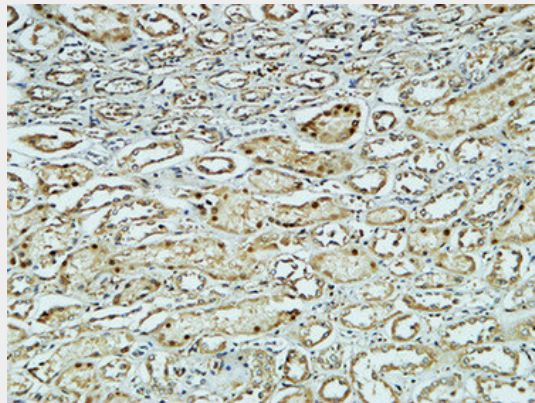
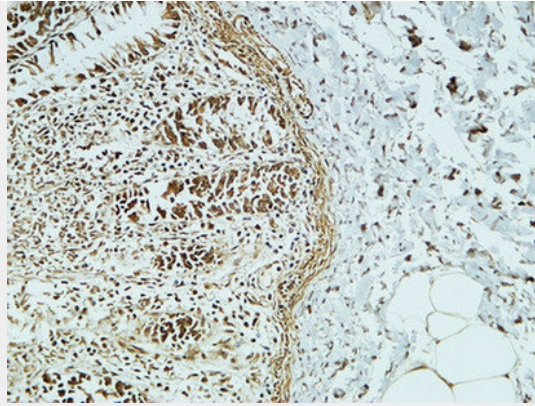
Provided below are standard protocols that you may find useful for product applications.

- [Western Blot](#)
- [Blocking Peptides](#)
- [Dot Blot](#)
- [Immunohistochemistry](#)
- [Immunofluorescence](#)
- [Immunoprecipitation](#)
- [Flow Cytometry](#)
- [Cell Culture](#)

## CD34 Polyclonal Antibody - Images







### **CD34 Polyclonal Antibody - Background**

Possible adhesion molecule with a role in early hematopoiesis by mediating the attachment of stem cells to the bone marrow extracellular matrix or directly to stromal cells. Could act as a scaffold for the attachment of lineage specific glycans, allowing stem cells to bind to lectins expressed by stromal cells or other marrow components. Presents carbohydrate ligands to selectins.