

**CD32-A Polyclonal Antibody**  
Catalog # AP68938**Specification**

---

**CD32-A Polyclonal Antibody - Product Information**

Application	WB
Primary Accession	<a href="#">P12318</a>
Reactivity	Human
Host	Rabbit
Clonality	Polyclonal

**CD32-A Polyclonal Antibody - Additional Information****Gene ID** 2212**Other Names**

FCGR2A; CD32; FCG2; FCGR2A1; IGFR2; Low affinity immunoglobulin gamma Fc region receptor II-a; IgG Fc receptor II-a; CDw32; Fc-gamma RII-a; Fc-gamma-RIIa; FcRII-a; CD antigen CD32

**Dilution**

WB~~Western Blot: 1/500 - 1/2000. ELISA: 1/20000. Not yet tested in other applications.

**Format**

Liquid in PBS containing 50% glycerol, 0.5% BSA and 0.09% (W/V) sodium azide.

**Storage Conditions**

-20°C

**CD32-A Polyclonal Antibody - Protein Information****Name** FCGR2A**Synonyms** CD32, FCG2, FCGR2A1, IGFR2**Function**

Binds to the Fc region of immunoglobulins gamma. Low affinity receptor. By binding to IgG it initiates cellular responses against pathogens and soluble antigens. Promotes phagocytosis of opsonized antigens.

**Cellular Location**

Cell membrane; Single-pass type I membrane protein

**Tissue Location**

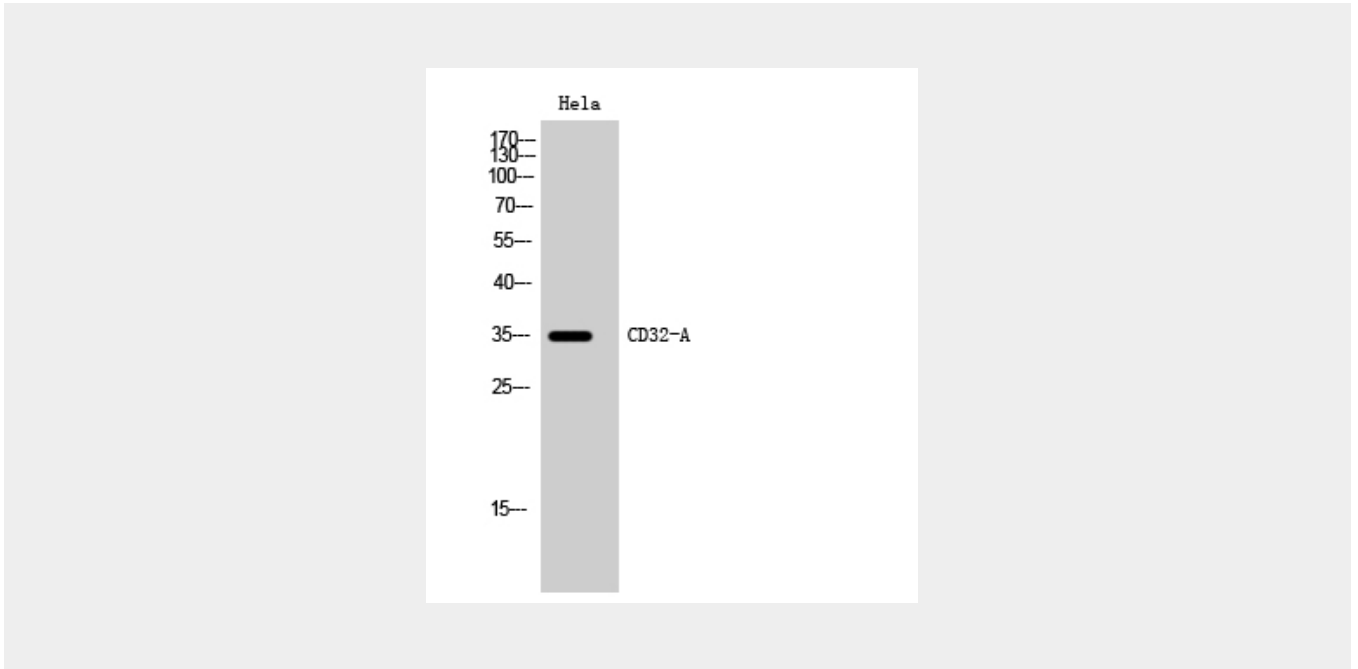
Found on monocytes, neutrophils and eosinophil platelets

**CD32-A Polyclonal Antibody - Protocols**

Provided below are standard protocols that you may find useful for product applications.

- [Western Blot](#)
- [Blocking Peptides](#)
- [Dot Blot](#)
- [Immunohistochemistry](#)
- [Immunofluorescence](#)
- [Immunoprecipitation](#)
- [Flow Cytometry](#)
- [Cell Culture](#)

#### **CD32-A Polyclonal Antibody - Images**



#### **CD32-A Polyclonal Antibody - Background**

Binds to the Fc region of immunoglobulins gamma. Low affinity receptor. By binding to IgG it initiates cellular responses against pathogens and soluble antigens. Promotes phagocytosis of opsonized antigens.