

## CD298 Polyclonal Antibody Catalog # AP68928

### Specification

---

#### CD298 Polyclonal Antibody - Product Information

Application	WB
Primary Accession	<a href="#">P54709</a>
Reactivity	Human
Host	Rabbit
Clonality	Polyclonal

#### CD298 Polyclonal Antibody - Additional Information

Gene ID 483

##### Other Names

ATP1B3; Sodium/potassium-transporting ATPase subunit beta-3; Sodium/potassium-dependent ATPase subunit beta-3; ATPB-3; CD antigen CD298

##### Dilution

WB~~Western Blot: 1/500 - 1/2000. ELISA: 1/10000. Not yet tested in other applications.

##### Format

Liquid in PBS containing 50% glycerol, 0.5% BSA and 0.09% (W/V) sodium azide.

##### Storage Conditions

-20°C

#### CD298 Polyclonal Antibody - Protein Information

Name ATP1B3

##### Function

This is the non-catalytic component of the active enzyme, which catalyzes the hydrolysis of ATP coupled with the exchange of Na(+) and K(+) ions across the plasma membrane. The exact function of the beta-3 subunit is not known.

##### Cellular Location

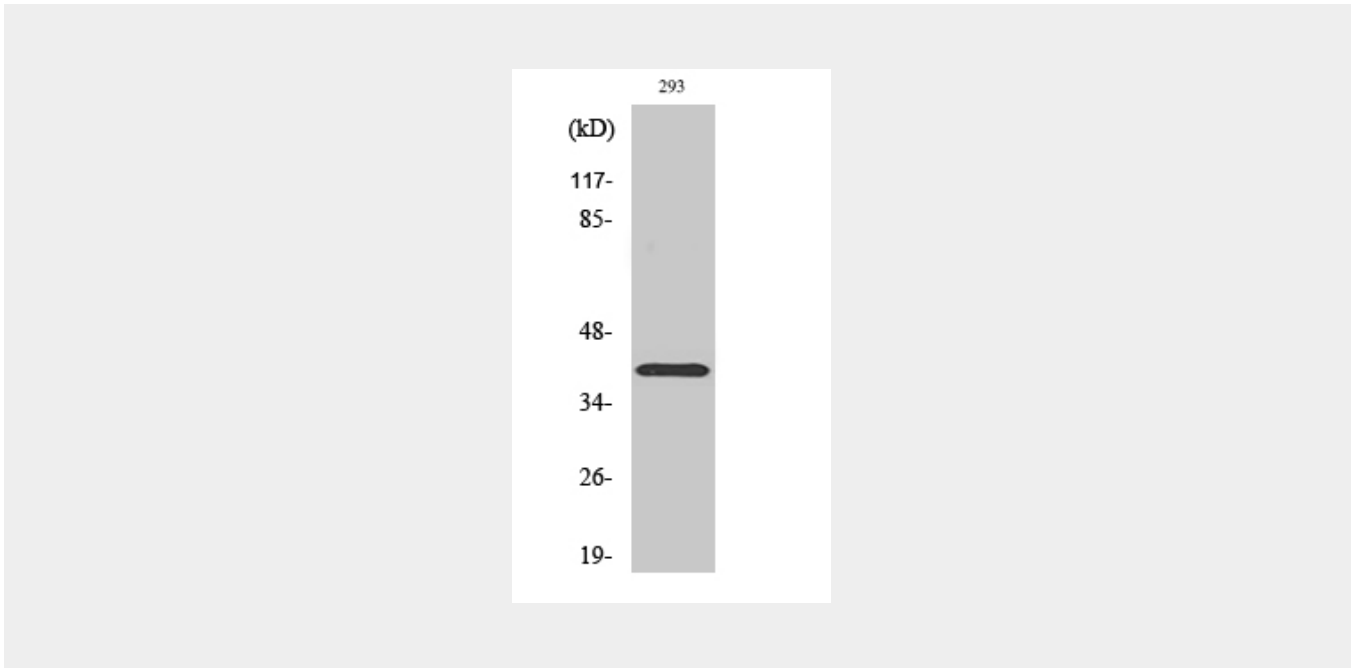
Apical cell membrane {ECO:0000250|UniProtKB:Q63377}; Single-pass type II membrane protein. Basolateral cell membrane {ECO:0000250|UniProtKB:Q63377}; Single-pass type II membrane protein. Melanosome Note=Identified by mass spectrometry in melanosome fractions from stage I to stage IV

#### CD298 Polyclonal Antibody - Protocols

Provided below are standard protocols that you may find useful for product applications.

- [Western Blot](#)
- [Blocking Peptides](#)
- [Dot Blot](#)
- [Immunohistochemistry](#)
- [Immunofluorescence](#)
- [Immunoprecipitation](#)
- [Flow Cytometry](#)
- [Cell Culture](#)

### CD298 Polyclonal Antibody - Images



### CD298 Polyclonal Antibody - Background

This is the non-catalytic component of the active enzyme, which catalyzes the hydrolysis of ATP coupled with the exchange of Na(+) and K(+) ions across the plasma membrane. The exact function of the beta-3 subunit is not known.