

**CD206 Polyclonal Antibody**  
Catalog # AP68922**Specification**

---

**CD206 Polyclonal Antibody - Product Information**

Application	<b>WB</b>
Primary Accession	<a href="#">P22897</a>
Reactivity	<b>Human, Mouse, Rat</b>
Host	<b>Rabbit</b>
Clonality	<b>Polyclonal</b>

**CD206 Polyclonal Antibody - Additional Information****Gene ID** 4360**Other Names**

MRC1; CLEC13D; CLEC13DL; MRC1L1; Macrophage mannose receptor 1; MMR; C-type lectin domain family 13 member D; C-type lectin domain family 13 member D-like; Macrophage mannose receptor 1-like protein 1; CD antigen CD206

**Dilution**

WB~~Western Blot: 1/500 - 1/2000. ELISA: 1/20000. Not yet tested in other applications.

**Format**

Liquid in PBS containing 50% glycerol, 0.5% BSA and 0.09% (W/V) sodium azide.

**Storage Conditions**

-20°C

**CD206 Polyclonal Antibody - Protein Information****Name** MRC1**Synonyms** CLEC13D, CLEC13DL, MRC1L1**Function**

Mediates the endocytosis of glycoproteins by macrophages. Binds both sulfated and non-sulfated polysaccharide chains. (Microbial infection) Acts as a receptor for Dengue virus envelope protein E.

**Cellular Location**

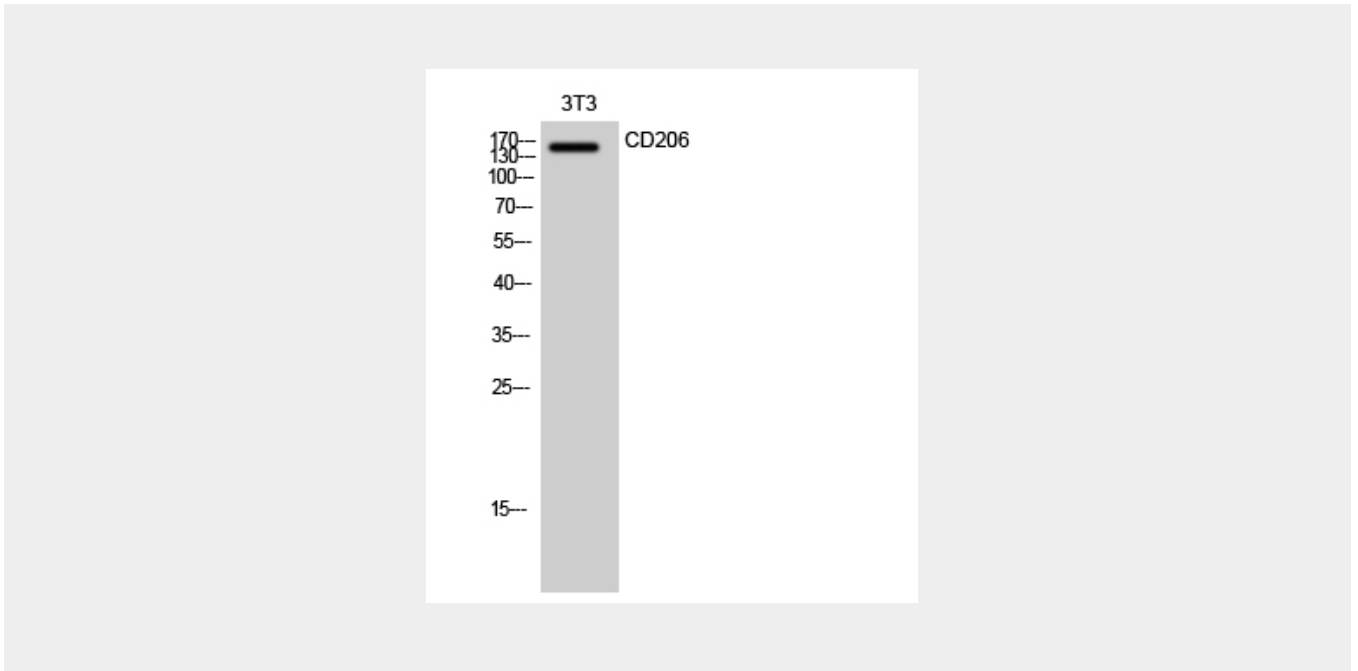
Endosome membrane; Single-pass type I membrane protein. Cell membrane; Single-pass type I membrane protein

**CD206 Polyclonal Antibody - Protocols**

Provided below are standard protocols that you may find useful for product applications.

- [Western Blot](#)
- [Blocking Peptides](#)
- [Dot Blot](#)
- [Immunohistochemistry](#)
- [Immunofluorescence](#)
- [Immunoprecipitation](#)
- [Flow Cytometry](#)
- [Cell Culture](#)

### CD206 Polyclonal Antibody - Images



### CD206 Polyclonal Antibody - Background

Mediates the endocytosis of glycoproteins by macrophages. Binds both sulfated and non-sulfated polysaccharide chains. (Microbial infection) Acts as a receptor for Dengue virus envelope protein E.