

RS18 Antibody (Center)
Affinity Purified Rabbit Polyclonal Antibody (Pab)
Catalog # AP6887c

Specification

RS18 Antibody (Center) - Product Information

Application	IF, WB, IHC-P-Leica, IHC-P, FC,E
Primary Accession	P62269
Other Accession	P62271 , P62272 , P62270 , Q3TOR1 , G1TPG3
Reactivity	Human, Mouse, Rat
Predicted	Bovine, Pig, Rabbit
Host	Rabbit
Clonality	Polyclonal
Isotype	Rabbit IgG
Antigen Region	62-91

RS18 Antibody (Center) - Additional Information

Gene ID 6222

Other Names

40S ribosomal protein S18, Ke-3, Ke3, RPS18, D6S218E

Target/Specificity

This RS18 antibody is generated from rabbits immunized with a KLH conjugated synthetic peptide between 62-91 amino acids from the Central region of human RS18.

Dilution

IF~~1:25
WB~~1:1000
IHC-P-Leica~~1:500
IHC-P~~1:100
FC~~1:25

Format

Purified polyclonal antibody supplied in PBS with 0.09% (W/V) sodium azide. This antibody is purified through a protein A column, followed by peptide affinity purification.

Storage

Maintain refrigerated at 2-8°C for up to 2 weeks. For long term storage store at -20°C in small aliquots to prevent freeze-thaw cycles.

Precautions

RS18 Antibody (Center) is for research use only and not for use in diagnostic or therapeutic procedures.

RS18 Antibody (Center) - Protein Information

Name RPS18

Synonyms D6S218E

Function Component of the small ribosomal subunit. The ribosome is a large ribonucleoprotein complex responsible for the synthesis of proteins in the cell.

Cellular Location

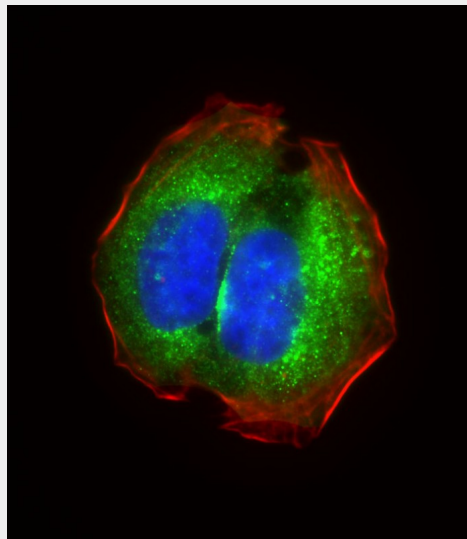
Cytoplasm.

RS18 Antibody (Center) - Protocols

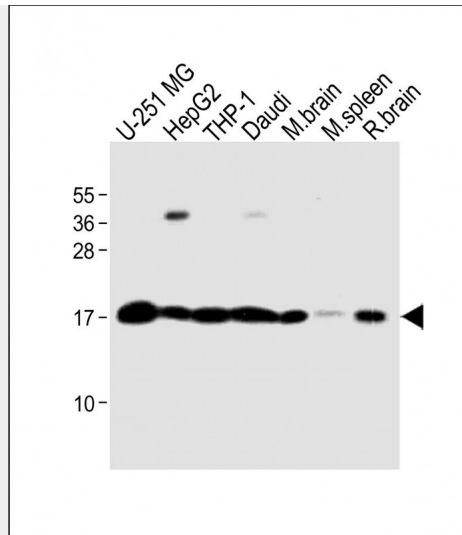
Provided below are standard protocols that you may find useful for product applications.

- [Western Blot](#)
- [Blocking Peptides](#)
- [Dot Blot](#)
- [Immunohistochemistry](#)
- [Immunofluorescence](#)
- [Immunoprecipitation](#)
- [Flow Cytometry](#)
- [Cell Culture](#)

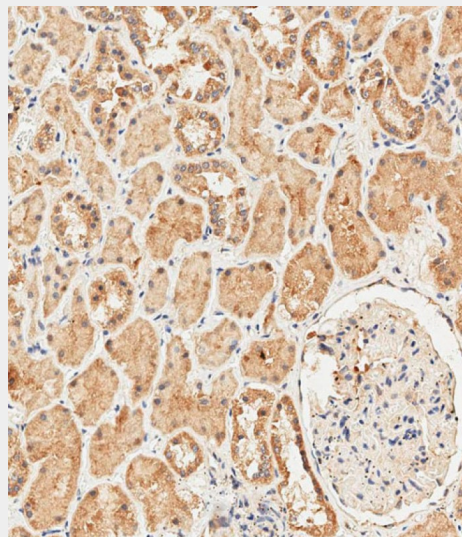
RS18 Antibody (Center) - Images



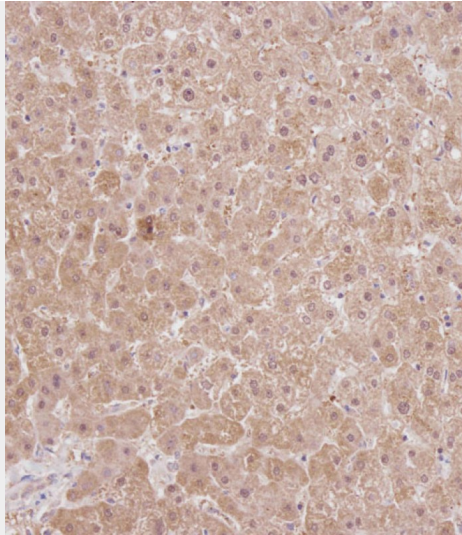
Immunofluorescent analysis of 4% paraformaldehyde-fixed, 0.1% Triton X-100 permeabilized U-2OS cells labeling RPS18 with AP6887C at 1/25 dilution, followed by Dylight® 488-conjugated goat anti-Rabbit IgG (OH191631) secondary antibody at 1/200 dilution (green). Immunofluorescence image showing cytoplasm staining on U-2OS cell line. Cytoplasmic actin is detected with Dylight® 554 Phalloidin (1186255) at 1/500 dilution (red). The nuclear counter stain is DAPI (blue).



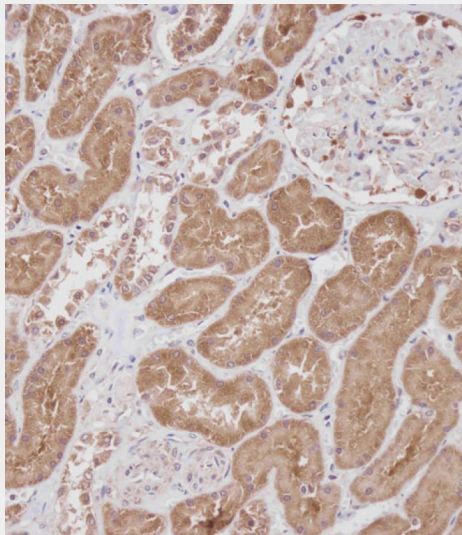
All lanes : Anti-RS18 Antibody (Center) at 1:1000 dilution Lane 1: U-251 MG whole cell lysate Lane 2: HepG2 whole cell lysate Lane 3: THP-1 whole cell lysate Lane 4: Daudi whole cell lysate Lane 5: Mouse brain lysate Lane 6: Mouse spleen lysate Lane 7: Rat brain lysate Lysates/proteins at 20 μ g per lane. Secondary Goat Anti-Rabbit IgG, (H+L), Peroxidase conjugated at 1/10000 dilution. Predicted band size : 18 kDa Blocking/Dilution buffer: 5% NFDm/TBST.



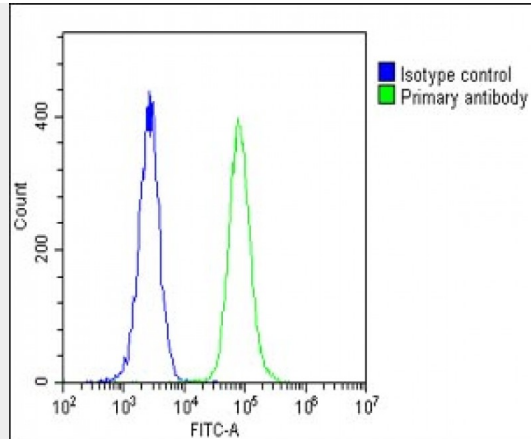
Immunohistochemical analysis of paraffin-embedded human kidney tissue using AP6887C performed on the Leica® BOND RXm. Samples were incubated with primary antibody(1/500) for 1 hours at room temperature. A undiluted biotinylated CRF Anti-Polyvalent HRP Polymer antibody was used as the secondary antibody.



Immunohistochemical analysis of AP6887C on paraffin-embedded Human liver tissue. Tissue was fixed with formaldehyde at room temperature. Heat induced epitope retrieval was performed by EDTA buffer (pH9. 0). Samples were incubated with primary antibody(1:100) for 1 hour at room temperature. Undiluted CRF Anti-Polyvalent HRP Polymer antibody was used as the secondary antibody.



Immunohistochemical analysis of AP6887C on paraffin-embedded Human kidney tissue. Tissue was fixed with formaldehyde at room temperature. Heat induced epitope retrieval was performed by EDTA buffer (pH9. 0). Samples were incubated with primary antibody(1:100) for 1 hour at room temperature. Undiluted CRF Anti-Polyvalent HRP Polymer antibody was used as the secondary antibody.



Overlay histogram showing U-2 OS cells stained with AP6887C(green line). The cells were fixed with 2% paraformaldehyde (10 min) and then permeabilized with 90% methanol for 10 min. The cells were then incubated in 2% bovine serum albumin to block non-specific protein-protein interactions followed by the antibody (AP6887C, 1:25 dilution) for 60 min at 37°C. The secondary antibody used was Goat-Anti-Rabbit IgG, DyLight® 488 Conjugated Highly Cross-Adsorbed(1583138) at 1/200 dilution for 40 min at 37°C. Isotype control antibody (blue line) was rabbit IgG1 (1µg/1x10⁶ cells) used under the same conditions. Acquisition of >10, 000 events was performed.

RS18 Antibody (Center) - Background

Ribosomes, the organelles that catalyze protein synthesis, consist of a small 40S subunit and a large 60S subunit. Together these subunits are composed of 4 RNA species and approximately 80 structurally distinct proteins. This protein is a ribosomal protein that is a component of the 40S subunit. The protein belongs to the S13P family of ribosomal proteins. It is located in the cytoplasm.

RS18 Antibody (Center) - References

Yu,Y., Ji,H., et.al., Protein Sci. 14 (6), 1438-1446 (2005)