

**Cathepsin B Polyclonal Antibody**  
Catalog # AP68862**Specification****Cathepsin B Polyclonal Antibody - Product Information**

Application	WB
Primary Accession	<a href="#">P07858</a>
Reactivity	Human, Mouse, Rat
Host	Rabbit
Clonality	Polyclonal

**Cathepsin B Polyclonal Antibody - Additional Information****Gene ID** 1508**Other Names**

CTSB; CPSB; Cathepsin B; APP secretase; APPS; Cathepsin B1

**Dilution**

WB~~Western Blot: 1/500 - 1/2000. Immunohistochemistry: 1/100 - 1/300. ELISA: 1/5000. Not yet tested in other applications.

**Format**

Liquid in PBS containing 50% glycerol, 0.5% BSA and 0.09% (W/V) sodium azide.

**Storage Conditions**

-20°C

**Cathepsin B Polyclonal Antibody - Protein Information****Name** CTSB**Synonyms** CPSB**Function**

Thiol protease which is believed to participate in intracellular degradation and turnover of proteins (PubMed:<a href="http://www.uniprot.org/citations/12220505" target="\_blank">12220505</a>). Cleaves matrix extracellular phosphoglycoprotein MEPE (PubMed:<a href="http://www.uniprot.org/citations/12220505" target="\_blank">12220505</a>). Involved in the solubilization of cross-linked TG/tyroglobulin in the thyroid follicle lumen (By similarity). Has also been implicated in tumor invasion and metastasis (PubMed:<a href="http://www.uniprot.org/citations/3972105" target="\_blank">3972105</a>).

**Cellular Location**

Lysosome. Melanosome. Secreted, extracellular space {ECO:0000250|UniProtKB:A1E295}. Apical cell membrane {ECO:0000250|UniProtKB:P10605}; Peripheral membrane protein {ECO:0000250|UniProtKB:P10605}; Extracellular side {ECO:0000250|UniProtKB:P10605}. Note=Identified by mass spectrometry in melanosome fractions from stage I to stage IV

(PubMed:17081065) Localizes to the lumen of thyroid follicles and to the apical membrane of thyroid epithelial cells (By similarity) {ECO:0000250|UniProtKB:P10605, ECO:0000269|PubMed:17081065}

#### Tissue Location

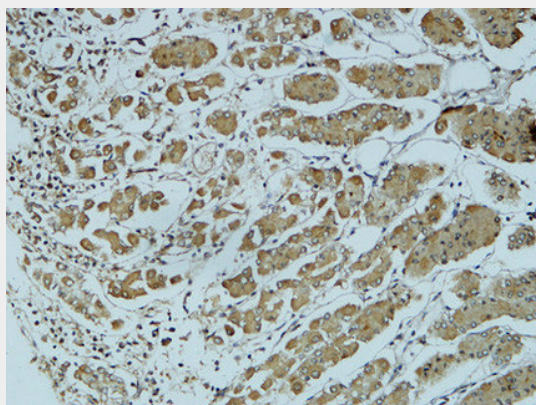
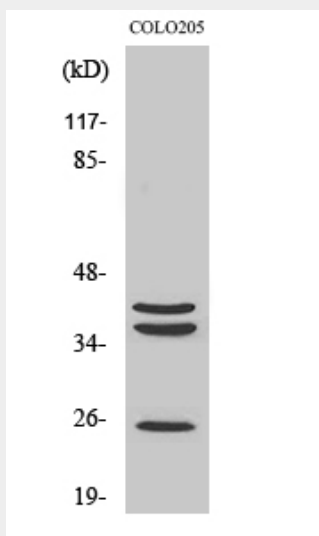
Expressed in the stratum spinosum of the epidermis. Weak expression is detected in the stratum granulosum

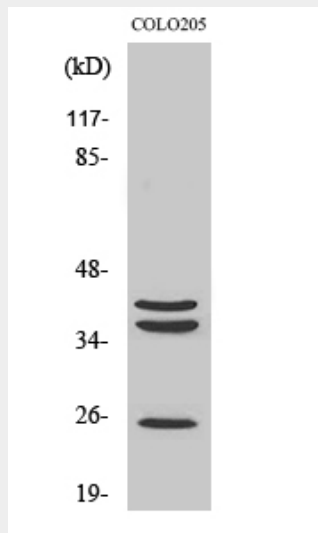
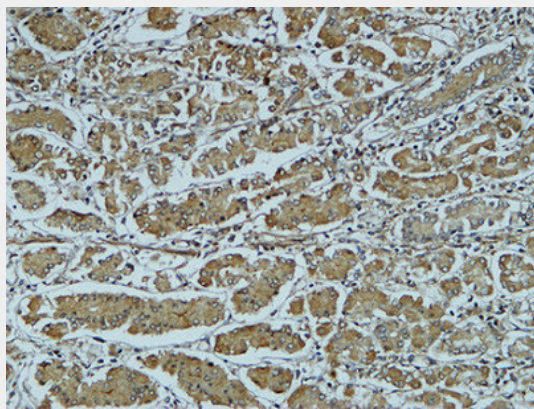
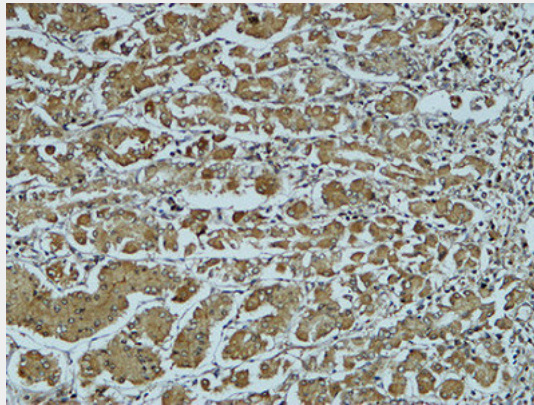
#### Cathepsin B Polyclonal Antibody - Protocols

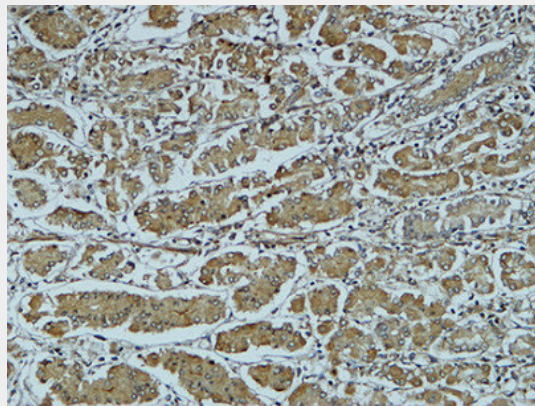
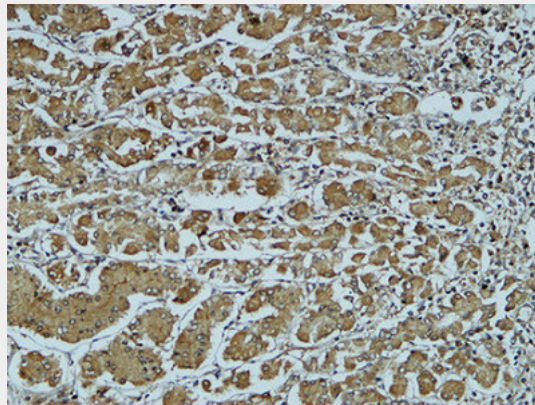
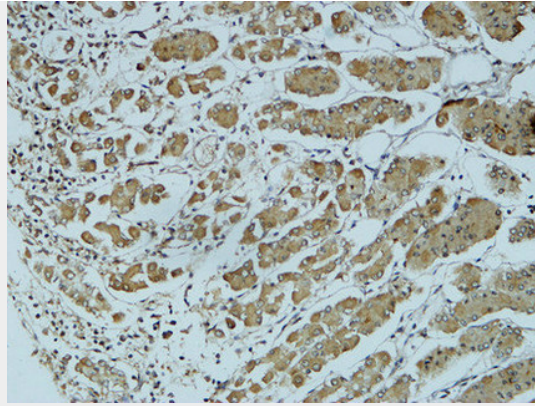
Provided below are standard protocols that you may find useful for product applications.

- [Western Blot](#)
- [Blocking Peptides](#)
- [Dot Blot](#)
- [Immunohistochemistry](#)
- [Immunofluorescence](#)
- [Immunoprecipitation](#)
- [Flow Cytometry](#)
- [Cell Culture](#)

#### Cathepsin B Polyclonal Antibody - Images







### **Cathepsin B Polyclonal Antibody - Background**

Thiol protease which is believed to participate in intracellular degradation and turnover of proteins (PubMed:12220505). Cleaves matrix extracellular phosphoglycoprotein MEPE (PubMed:12220505). Has also been implicated in tumor invasion and metastasis (PubMed:3972105).