

## Cardiotrophin-1 Polyclonal Antibody Catalog # AP68821

### Specification

---

#### Cardiotrophin-1 Polyclonal Antibody - Product Information

Application	WB
Primary Accession	<a href="#">Q16619</a>
Reactivity	Human, Mouse, Rat
Host	Rabbit
Clonality	Polyclonal

#### Cardiotrophin-1 Polyclonal Antibody - Additional Information

Gene ID 1489

#### Other Names

CTF1; Cardiotrophin-1; CT-1

#### Dilution

WB~~Western Blot: 1/500 - 1/2000. Immunohistochemistry: 1/100 - 1/300. ELISA: 1/40000. Not yet tested in other applications.

#### Format

Liquid in PBS containing 50% glycerol, 0.5% BSA and 0.09% (W/V) sodium azide.

#### Storage Conditions

-20°C

#### Cardiotrophin-1 Polyclonal Antibody - Protein Information

Name CTF1

#### Function

Induces cardiac myocyte hypertrophy in vitro. Binds to and activates the ILST/gp130 receptor.

#### Cellular Location

Secreted.

#### Tissue Location

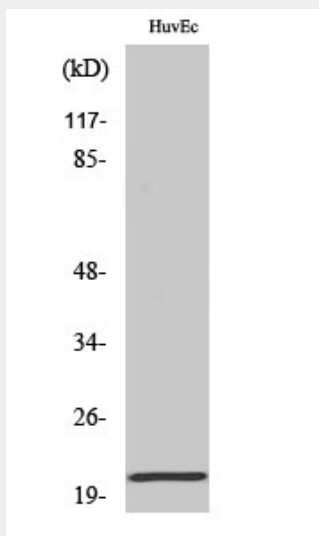
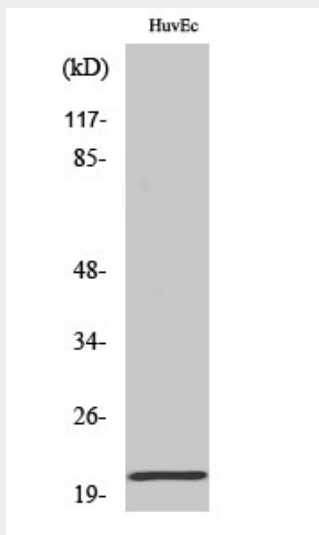
Highly expressed in heart, skeletal muscle, prostate and ovary. Lower levels in lung, kidney, pancreas, thymus, testis and small intestine. Little or no expression in brain, placenta, liver, spleen, colon or peripheral blood leukocytes

#### Cardiotrophin-1 Polyclonal Antibody - Protocols

Provided below are standard protocols that you may find useful for product applications.

- [Western Blot](#)
- [Blocking Peptides](#)
- [Dot Blot](#)
- [Immunohistochemistry](#)
- [Immunofluorescence](#)
- [Immunoprecipitation](#)
- [Flow Cytometry](#)
- [Cell Culture](#)

### Cardiotrophin-1 Polyclonal Antibody - Images



### Cardiotrophin-1 Polyclonal Antibody - Background

Induces cardiac myocyte hypertrophy in vitro. Binds to and activates the ILST/gp130 receptor.