

CARD 6 Polyclonal Antibody
Catalog # AP68820**Specification**

CARD 6 Polyclonal Antibody - Product Information

Application	WB
Primary Accession	Q9BX69
Reactivity	Human
Host	Rabbit
Clonality	Polyclonal

CARD 6 Polyclonal Antibody - Additional Information**Gene ID** 84674**Other Names**

CARD6; Caspase recruitment domain-containing protein 6

Dilution

WB~~Western Blot: 1/500 - 1/2000. Immunohistochemistry: 1/100 - 1/300. Immunofluorescence: 1/200 - 1/1000. ELISA: 1/10000. Not yet tested in other applications.

Format

Liquid in PBS containing 50% glycerol, 0.5% BSA and 0.09% (W/V) sodium azide.

Storage Conditions

-20°C

CARD 6 Polyclonal Antibody - Protein Information**Name** CARD6**Function**

May be involved in apoptosis.

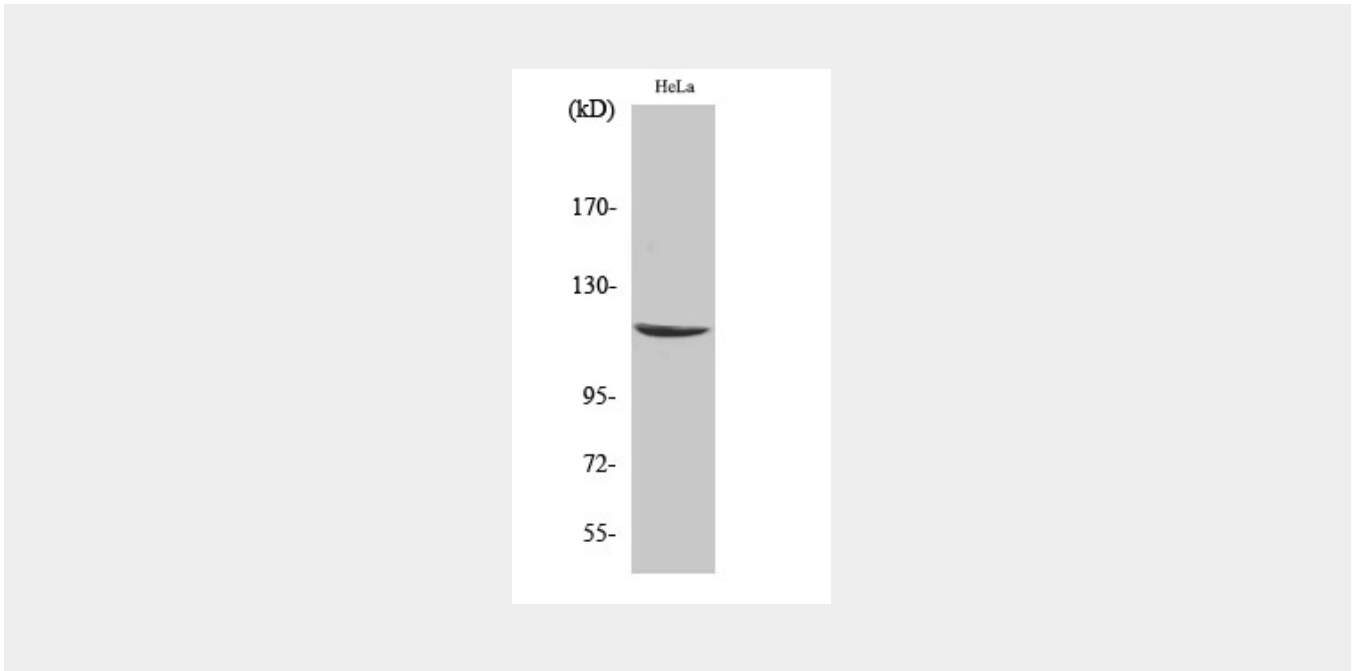
CARD 6 Polyclonal Antibody - Protocols

Provided below are standard protocols that you may find useful for product applications.

- [Western Blot](#)
- [Blocking Peptides](#)
- [Dot Blot](#)
- [Immunohistochemistry](#)
- [Immunofluorescence](#)
- [Immunoprecipitation](#)
- [Flow Cytometry](#)

- [Cell Culture](#)

CARD 6 Polyclonal Antibody - Images



CARD 6 Polyclonal Antibody - Background

May be involved in apoptosis.