

CARD 10 Polyclonal Antibody
Catalog # AP68817**Specification**

CARD 10 Polyclonal Antibody - Product Information

Application	WB
Primary Accession	Q9BWT7
Reactivity	Human, Mouse
Host	Rabbit
Clonality	Polyclonal

CARD 10 Polyclonal Antibody - Additional Information**Gene ID** 29775**Other Names**

CARD10; CARMA3; Caspase recruitment domain-containing protein 10; CARD-containing MAGUK protein 3; Carma 3

Dilution

WB~~Western Blot: 1/500 - 1/2000. Immunohistochemistry: 1/100 - 1/300. Immunofluorescence: 1/200 - 1/1000. ELISA: 1/10000. Not yet tested in other applications.

Format

Liquid in PBS containing 50% glycerol, 0.5% BSA and 0.09% (W/V) sodium azide.

Storage Conditions

-20°C

CARD 10 Polyclonal Antibody - Protein Information**Name** CARD10**Synonyms** CARMA3**Function**

Scaffold protein that plays an important role in mediating the activation of NF-kappa-B via BCL10 or EGFR.

Cellular Location

Cytoplasm.

Tissue Location

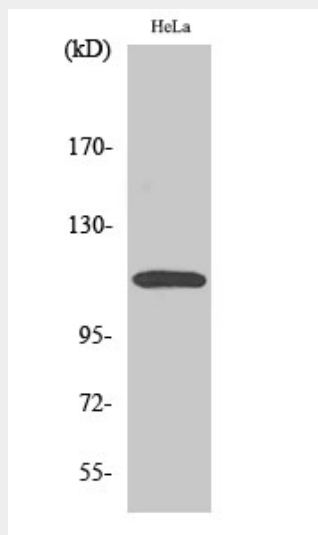
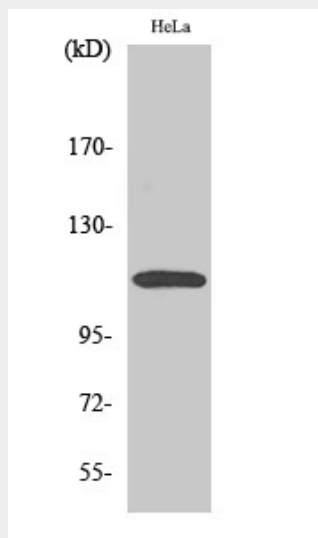
Detected in adult heart, kidney and liver; lower levels in intestine, placenta, muscle and lung. Also found in fetal lung, liver and kidney

CARD 10 Polyclonal Antibody - Protocols

Provided below are standard protocols that you may find useful for product applications.

- [Western Blot](#)
- [Blocking Peptides](#)
- [Dot Blot](#)
- [Immunohistochemistry](#)
- [Immunofluorescence](#)
- [Immunoprecipitation](#)
- [Flow Cytometry](#)
- [Cell Culture](#)

CARD 10 Polyclonal Antibody - Images



CARD 10 Polyclonal Antibody - Background

Activates NF-kappa-B via BCL10 and IKK.