

Carbonyl Reductase 3 Polyclonal Antibody
Catalog # AP68816**Specification****Carbonyl Reductase 3 Polyclonal Antibody - Product Information**

Application	WB
Primary Accession	O75828
Reactivity	Human, Mouse, Rat
Host	Rabbit
Clonality	Polyclonal

Carbonyl Reductase 3 Polyclonal Antibody - Additional Information

Gene ID 874

Other Names

CBR3; Carbonyl reductase [NADPH] 3; NADPH-dependent carbonyl reductase 3

Dilution

WB~~Western Blot: 1/500 - 1/2000. Immunohistochemistry: 1/100 - 1/300. ELISA: 1/40000. Not yet tested in other applications.

Format

Liquid in PBS containing 50% glycerol, 0.5% BSA and 0.09% (W/V) sodium azide.

Storage Conditions

-20°C

Carbonyl Reductase 3 Polyclonal Antibody - Protein InformationName CBR3 ([HGNC:1549](#))**Function**

Catalyzes the NADPH-dependent reduction of carbonyl compounds to their corresponding alcohols (PubMed:[18493841](http://www.uniprot.org/citations/18493841)). Has low NADPH- dependent oxidoreductase activity. Acts on several orthoquinones, acts as well on non-quinone compounds, such as isatin or on the anticancer drug oracin (PubMed:[15537833](http://www.uniprot.org/citations/15537833), PubMed:[18493841](http://www.uniprot.org/citations/18493841), PubMed:[19841672](http://www.uniprot.org/citations/19841672)). Best substrates for CBR3 is 1,2- naphthoquinone, hence could play a role in protection against cytotoxicity of exogenous quinones (PubMed:[19841672](http://www.uniprot.org/citations/19841672)). Exerts activity toward ortho-quinones but not paraquinones. No endogenous substrate for CBR3 except isatin has been identified (PubMed:[19841672](http://www.uniprot.org/citations/19841672)).

Cellular Location

Cytoplasm.

Tissue Location

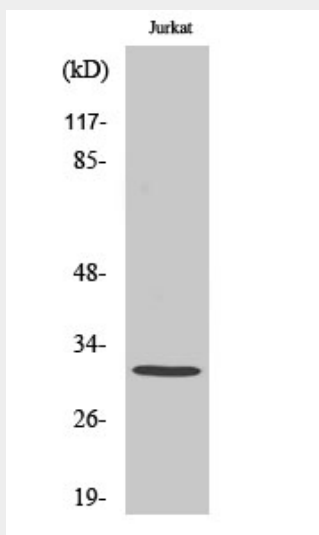
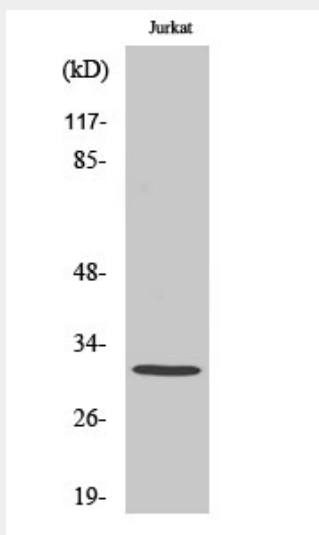
Detected in ovary, pancreas, intestine, colon, kidney, brain, thymus, lung, heart, liver, spleen, leukocyte, prostate and testis.

Carbonyl Reductase 3 Polyclonal Antibody - Protocols

Provided below are standard protocols that you may find useful for product applications.

- [Western Blot](#)
- [Blocking Peptides](#)
- [Dot Blot](#)
- [Immunohistochemistry](#)
- [Immunofluorescence](#)
- [Immunoprecipitation](#)
- [Flow Cytometry](#)
- [Cell Culture](#)

Carbonyl Reductase 3 Polyclonal Antibody - Images



Carbonyl Reductase 3 Polyclonal Antibody - Background

Has low NADPH-dependent oxidoreductase activity towards 4-benzoylpyridine and menadione (in vitro).