

**GALT Antibody (C-term)**  
**Affinity Purified Rabbit Polyclonal Antibody (Pab)**  
**Catalog # AP6880b**

**Specification**

---

**GALT Antibody (C-term) - Product Information**

Application	WB, IHC-P, FC,E
Primary Accession	<a href="#">P07902</a>
Reactivity	Human
Host	Rabbit
Clonality	Polyclonal
Isotype	Rabbit IgG
Calculated MW	43363
Antigen Region	344-373

**GALT Antibody (C-term) - Additional Information**

**Gene ID** 2592

**Other Names**

Galactose-1-phosphate uridylyltransferase, Gal-1-P uridylyltransferase,  
UDP-glucose--hexose-1-phosphate uridylyltransferase, GALT

**Target/Specificity**

This GALT antibody is generated from rabbits immunized with a KLH conjugated synthetic peptide between 344-373 amino acids from the C-terminal region of human GALT.

**Dilution**

WB~~1:1000  
IHC-P~~1:50~100  
FC~~1:10~50

**Format**

Purified polyclonal antibody supplied in PBS with 0.09% (W/V) sodium azide. This antibody is purified through a protein A column, followed by peptide affinity purification.

**Storage**

Maintain refrigerated at 2-8°C for up to 2 weeks. For long term storage store at -20°C in small aliquots to prevent freeze-thaw cycles.

**Precautions**

GALT Antibody (C-term) is for research use only and not for use in diagnostic or therapeutic procedures.

**GALT Antibody (C-term) - Protein Information**

**Name** GALT

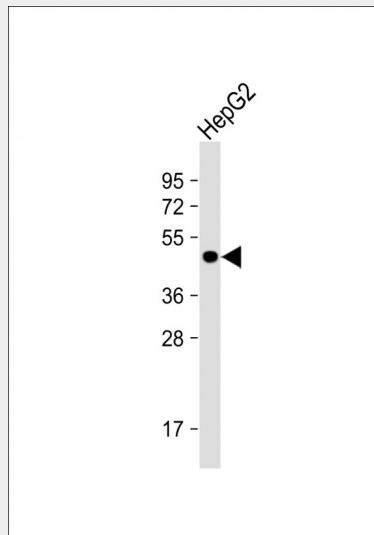
**Function** Plays an important role in galactose metabolism.

### GALT Antibody (C-term) - Protocols

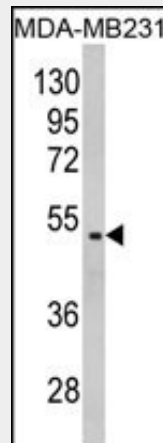
Provided below are standard protocols that you may find useful for product applications.

- [Western Blot](#)
- [Blocking Peptides](#)
- [Dot Blot](#)
- [Immunohistochemistry](#)
- [Immunofluorescence](#)
- [Immunoprecipitation](#)
- [Flow Cytometry](#)
- [Cell Culture](#)

### GALT Antibody (C-term) - Images

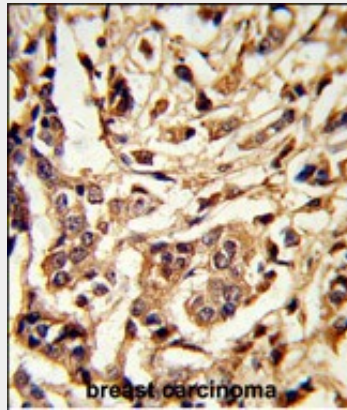


Anti-GALT Antibody (C-term) at 1:1000 dilution + HepG2 whole cell lysate Lysates/proteins at 20  $\mu$ g per lane. Secondary Goat Anti-Rabbit IgG, (H+L), Peroxidase conjugated at 1/10000 dilution. Predicted band size : 43 kDa Blocking/Dilution buffer: 5% NFDN/TBST.

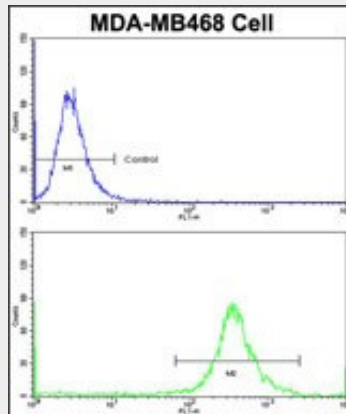


Western blot analysis of GALT Antibody (C-term) (Cat. #AP6880b) in MDA-MB231 cell line lysates

(35ug/lane). GALT (arrow) was detected using the purified Pab.



Formalin-fixed and paraffin-embedded human breast carcinoma reacted with GALT Antibody (C-term), which was peroxidase-conjugated to the secondary antibody, followed by DAB staining. This data demonstrates the use of this antibody for immunohistochemistry; clinical relevance has not been evaluated.



Flow cytometric analysis of MDA-MB468 cells using GALT Antibody (C-term)(bottom histogram) compared to a negative control cell (top histogram) FITC-conjugated goat-anti-rabbit secondary antibodies were used for the analysis.

### **GALT Antibody (C-term) - Background**

Galactose-1-phosphate uridyl transferase (GALT) catalyzes the second step of the Leloir pathway of galactose metabolism, namely the conversion of UDP-glucose + galactose-1-phosphate to glucose-1-phosphate + UDP-galactose. The absence of this enzyme results in classic galactosemia in humans and can be fatal in the newborn period if lactose is not removed from the diet.

### **GALT Antibody (C-term) - References**

Leslie, N.D., et al., Genomics 14 (2), 474-480 (1992)