

CA XIII Polyclonal Antibody
Catalog # AP68764**Specification**

CA XIII Polyclonal Antibody - Product Information

Application	WB
Primary Accession	Q8N1Q1
Reactivity	Human, Mouse
Host	Rabbit
Clonality	Polyclonal

CA XIII Polyclonal Antibody - Additional Information**Gene ID** 377677**Other Names**

CA13; Carbonic anhydrase 13; Carbonate dehydratase XIII; Carbonic anhydrase XIII; CA-XIII

Dilution

WB~~Western Blot: 1/500 - 1/2000. ELISA: 1/10000. Not yet tested in other applications.

Format

Liquid in PBS containing 50% glycerol, 0.5% BSA and 0.09% (W/V) sodium azide.

Storage Conditions

-20°C

CA XIII Polyclonal Antibody - Protein Information**Name** CA13**Function**

Reversible hydration of carbon dioxide.

Tissue Location

Expressed in thymus, small intestine, spleen, prostate, ovary, colon and testis.

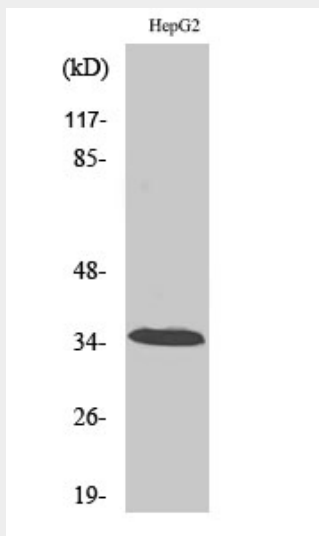
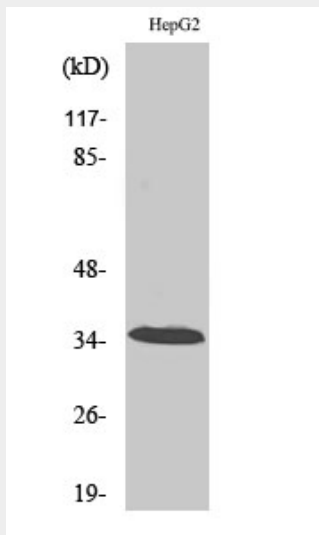
CA XIII Polyclonal Antibody - Protocols

Provided below are standard protocols that you may find useful for product applications.

- [Western Blot](#)
- [Blocking Peptides](#)
- [Dot Blot](#)
- [Immunohistochemistry](#)
- [Immunofluorescence](#)

- [Immunoprecipitation](#)
- [Flow Cytometry](#)
- [Cell Culture](#)

CA XIII Polyclonal Antibody - Images



CA XIII Polyclonal Antibody - Background

Reversible hydration of carbon dioxide.