

CA VI Polyclonal Antibody
Catalog # AP68761**Specification**

CA VI Polyclonal Antibody - Product Information

Application	WB
Primary Accession	P23280
Reactivity	Human
Host	Rabbit
Clonality	Polyclonal

CA VI Polyclonal Antibody - Additional Information**Gene ID** 765**Other Names**

CA6; Carbonic anhydrase 6; Carbonate dehydratase VI; Carbonic anhydrase VI; CA-VI; Salivary carbonic anhydrase; Secreted carbonic anhydrase

Dilution

WB~~Western Blot: 1/500 - 1/2000. ELISA: 1/20000. Not yet tested in other applications.

Format

Liquid in PBS containing 50% glycerol, 0.5% BSA and 0.09% (W/V) sodium azide.

Storage Conditions

-20°C

CA VI Polyclonal Antibody - Protein Information**Name** CA6**Function**

Reversible hydration of carbon dioxide. Its role in saliva is unknown.

Cellular Location

Secreted.

Tissue Location

Major constituent of saliva.

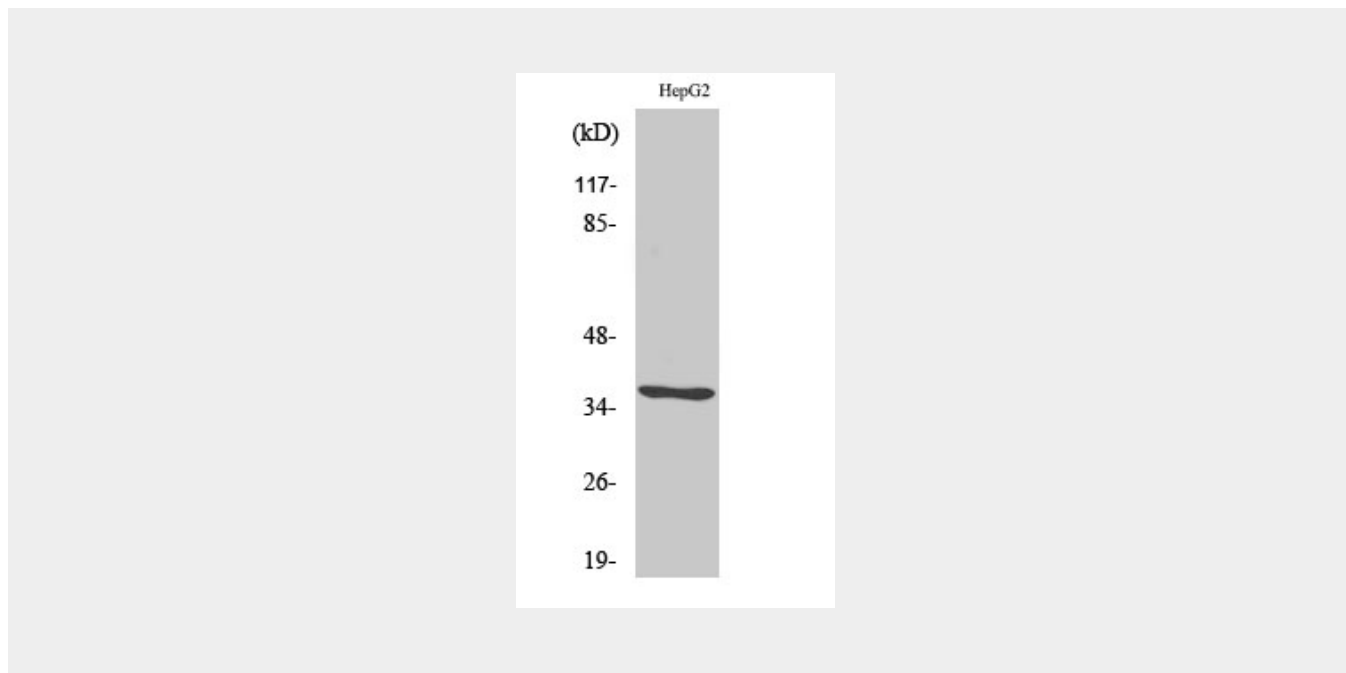
CA VI Polyclonal Antibody - Protocols

Provided below are standard protocols that you may find useful for product applications.

- [Western Blot](#)

- [Blocking Peptides](#)
- [Dot Blot](#)
- [Immunohistochemistry](#)
- [Immunofluorescence](#)
- [Immunoprecipitation](#)
- [Flow Cytometry](#)
- [Cell Culture](#)

CA VI Polyclonal Antibody - Images



CA VI Polyclonal Antibody - Background

Reversible hydration of carbon dioxide. Its role in saliva is unknown.