

**C6 Polyclonal Antibody**  
Catalog # AP68753**Specification**

---

**C6 Polyclonal Antibody - Product Information**

Application	<b>WB</b>
Primary Accession	<a href="#">P13671</a>
Reactivity	<b>Human, Rat</b>
Host	<b>Rabbit</b>
Clonality	<b>Polyclonal</b>

**C6 Polyclonal Antibody - Additional Information****Gene ID** 729**Other Names**

C6; Complement component C6

**Dilution**

WB~~Western Blot: 1/500 - 1/2000. Immunohistochemistry: 1/100 - 1/300. ELISA: 1/40000. Not yet tested in other applications.

**Format**

Liquid in PBS containing 50% glycerol, 0.5% BSA and 0.09% (W/V) sodium azide.

**Storage Conditions**

-20°C

**C6 Polyclonal Antibody - Protein Information****Name** C6**Function**

Constituent of the membrane attack complex (MAC) that plays a key role in the innate and adaptive immune response by forming pores in the plasma membrane of target cells.

**Cellular Location**

Secreted.

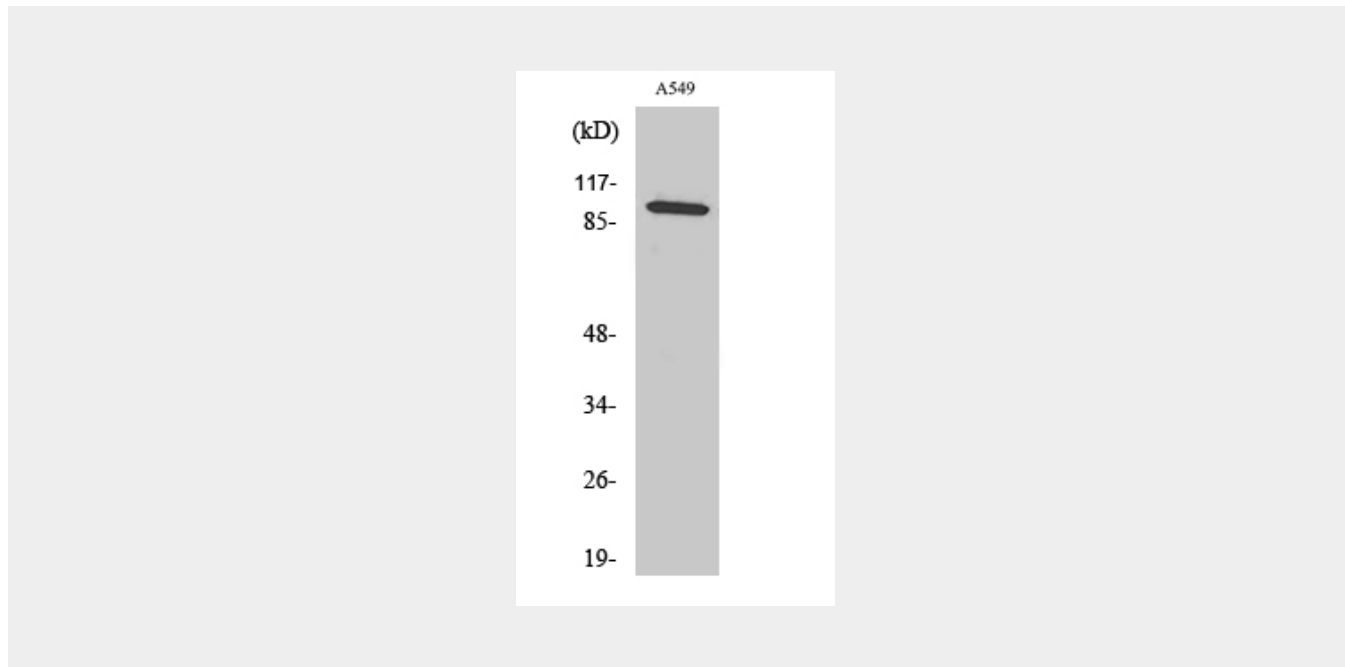
**C6 Polyclonal Antibody - Protocols**

Provided below are standard protocols that you may find useful for product applications.

- [Western Blot](#)
- [Blocking Peptides](#)
- [Dot Blot](#)

- [Immunohistochemistry](#)
- [Immunofluorescence](#)
- [Immunoprecipitation](#)
- [Flow Cytometry](#)
- [Cell Culture](#)

### C6 Polyclonal Antibody - Images



### C6 Polyclonal Antibody - Background

Constituent of the membrane attack complex (MAC) that plays a key role in the innate and adaptive immune response by forming pores in the plasma membrane of target cells.