

**C1q-B Polyclonal Antibody**  
Catalog # AP68746**Specification**

---

**C1q-B Polyclonal Antibody - Product Information**

Application	WB
Primary Accession	<a href="#">P02746</a>
Reactivity	Human
Host	Rabbit
Clonality	Polyclonal

**C1q-B Polyclonal Antibody - Additional Information****Gene ID** 713**Other Names**

C1QB; Complement C1q subcomponent subunit B

**Dilution**

WB~~Western Blot: 1/500 - 1/2000. Immunohistochemistry: 1/100 - 1/300. Immunofluorescence: 1/200 - 1/1000. ELISA: 1/40000. Not yet tested in other applications.

**Format**

Liquid in PBS containing 50% glycerol, 0.5% BSA and 0.09% (W/V) sodium azide.

**Storage Conditions**

-20°C

**C1q-B Polyclonal Antibody - Protein Information****Name** C1QB**Function**

C1q associates with the proenzymes C1r and C1s to yield C1, the first component of the serum complement system. The collagen-like regions of C1q interact with the Ca(2+)-dependent C1r(2)C1s(2) proenzyme complex, and efficient activation of C1 takes place on interaction of the globular heads of C1q with the Fc regions of IgG or IgM antibody present in immune complexes.

**Cellular Location**

Secreted.

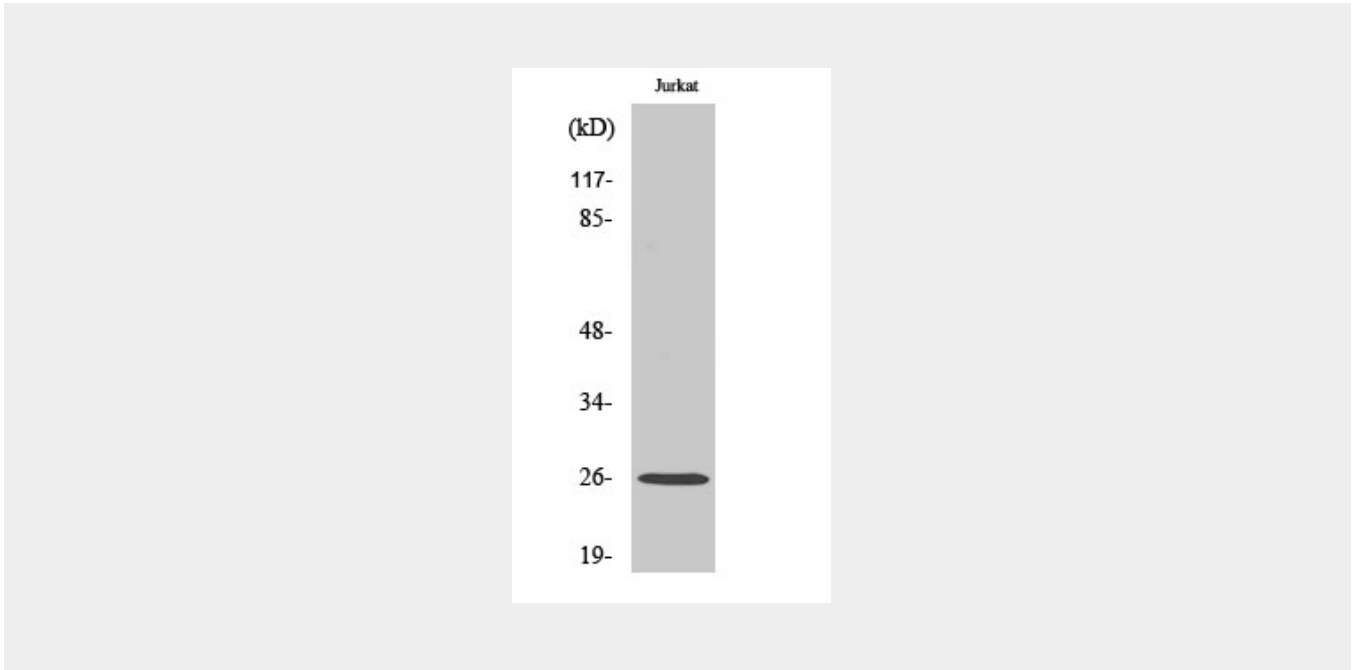
**C1q-B Polyclonal Antibody - Protocols**

Provided below are standard protocols that you may find useful for product applications.

- [Western Blot](#)

- [Blocking Peptides](#)
- [Dot Blot](#)
- [Immunohistochemistry](#)
- [Immunofluorescence](#)
- [Immunoprecipitation](#)
- [Flow Cytometry](#)
- [Cell Culture](#)

### **C1q-B Polyclonal Antibody - Images**



### **C1q-B Polyclonal Antibody - Background**

C1q associates with the proenzymes C1r and C1s to yield C1, the first component of the serum complement system. The collagen-like regions of C1q interact with the Ca(2+)-dependent C1r(2)C1s(2) proenzyme complex, and efficient activation of C1 takes place on interaction of the globular heads of C1q with the Fc regions of IgG or IgM antibody present in immune complexes.