

**C/EBP  $\epsilon$  Polyclonal Antibody**  
Catalog # AP68741**Specification**

---

**C/EBP  $\epsilon$  Polyclonal Antibody - Product Information**

Application	<b>WB</b>
Primary Accession	<a href="#">Q15744</a>
Reactivity	<b>Human</b>
Host	<b>Rabbit</b>
Clonality	<b>Polyclonal</b>

**C/EBP  $\epsilon$  Polyclonal Antibody - Additional Information****Gene ID** 1053**Other Names**

CEBPE; CCAAT/enhancer-binding protein epsilon; C/EBP epsilon

**Dilution**

WB~~Western Blot: 1/500 - 1/2000. Immunohistochemistry: 1/100 - 1/300. Immunofluorescence: 1/200 - 1/1000. ELISA: 1/5000. Not yet tested in other applications.

**Format**

Liquid in PBS containing 50% glycerol, 0.5% BSA and 0.09% (W/V) sodium azide.

**Storage Conditions**

-20°C

**C/EBP  $\epsilon$  Polyclonal Antibody - Protein Information****Name** CEBPE**Function**

Transcriptional activator (PubMed:<a href="http://www.uniprot.org/citations/26019275" target="\_blank">26019275</a>). C/EBP are DNA- binding proteins that recognize two different motifs: the CCAAT homology common to many promoters and the enhanced core homology common to many enhancers. Required for the promyelocyte-myelocyte transition in myeloid differentiation (PubMed:<a href="http://www.uniprot.org/citations/10359588" target="\_blank">10359588</a>).

**Cellular Location**

Nucleus

**Tissue Location**

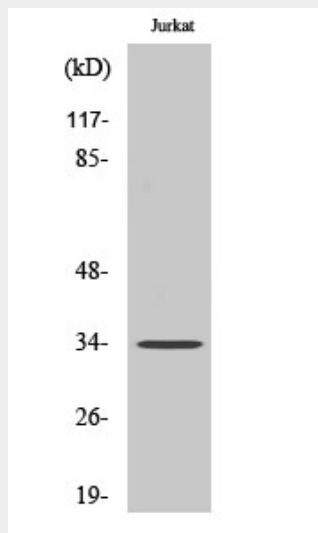
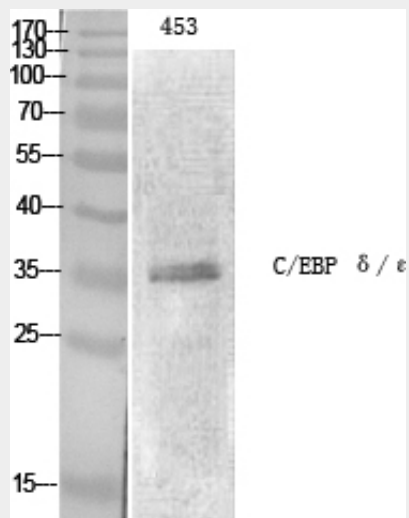
Strongest expression occurs in promyelocyte and late-myeloblast-like cell lines.

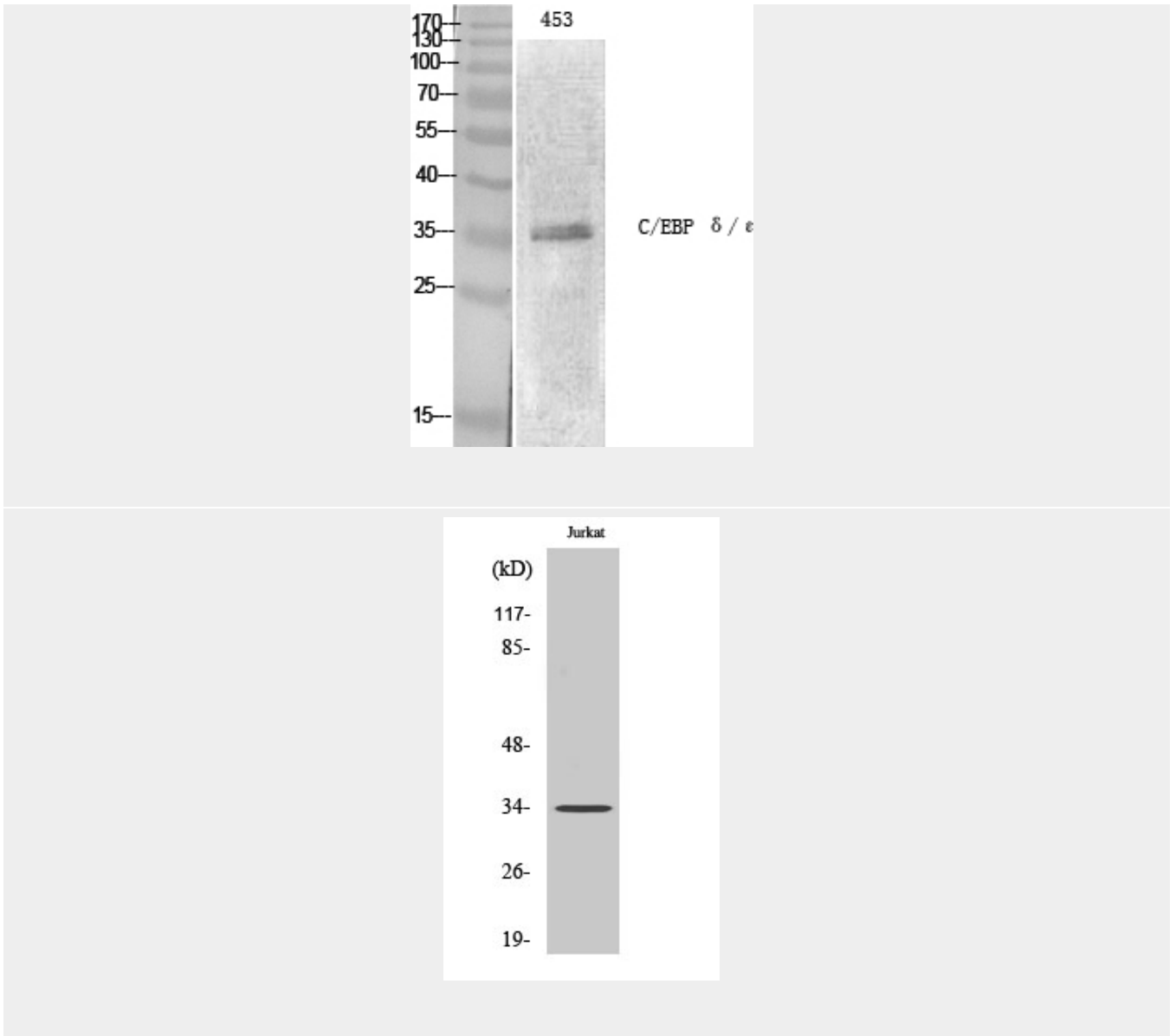
## C/EBP $\epsilon$ Polyclonal Antibody - Protocols

Provided below are standard protocols that you may find useful for product applications.

- [Western Blot](#)
- [Blocking Peptides](#)
- [Dot Blot](#)
- [Immunohistochemistry](#)
- [Immunofluorescence](#)
- [Immunoprecipitation](#)
- [Flow Cytometry](#)
- [Cell Culture](#)

## C/EBP $\epsilon$ Polyclonal Antibody - Images





### C/EBP ε Polyclonal Antibody - Background

Transcriptional activator (PubMed:26019275). C/EBP are DNA-binding proteins that recognize two different motifs: the CCAAT homology common to many promoters and the enhanced core homology common to many enhancers. Required for the promyelocyte- myelocyte transition in myeloid differentiation (PubMed:10359588).