

C/EBP ϵ Polyclonal Antibody
Catalog # AP68740**Specification**

C/EBP ϵ Polyclonal Antibody - Product Information

Application	WB
Primary Accession	Q15744
Reactivity	Human, Mouse, Rat
Host	Rabbit
Clonality	Polyclonal

C/EBP ϵ Polyclonal Antibody - Additional Information**Gene ID** 1053**Other Names**

CEBPE; CCAAT/enhancer-binding protein epsilon; C/EBP epsilon

Dilution

WB~~Western Blot: 1/500 - 1/2000. Immunohistochemistry: 1/100 - 1/300. ELISA: 1/10000. Not yet tested in other applications.

Format

Liquid in PBS containing 50% glycerol, 0.5% BSA and 0.09% (W/V) sodium azide.

Storage Conditions

-20°C

C/EBP ϵ Polyclonal Antibody - Protein Information**Name** CEBPE**Function**

Transcriptional activator (PubMed:26019275). C/EBP are DNA- binding proteins that recognize two different motifs: the CCAAT homology common to many promoters and the enhanced core homology common to many enhancers. Required for the promyelocyte-myelocyte transition in myeloid differentiation (PubMed:10359588).

Cellular Location

Nucleus

Tissue Location

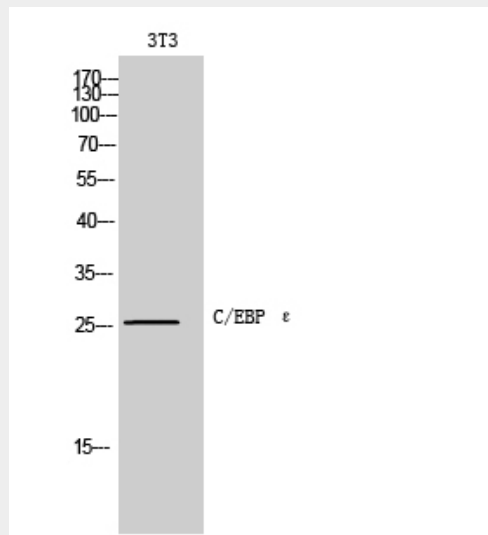
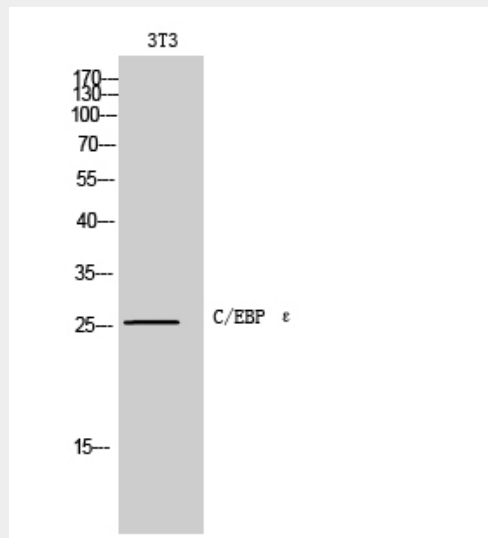
Strongest expression occurs in promyelocyte and late-myeloblast-like cell lines.

C/EBP ϵ Polyclonal Antibody - Protocols

Provided below are standard protocols that you may find useful for product applications.

- [Western Blot](#)
- [Blocking Peptides](#)
- [Dot Blot](#)
- [Immunohistochemistry](#)
- [Immunofluorescence](#)
- [Immunoprecipitation](#)
- [Flow Cytometry](#)
- [Cell Culture](#)

C/EBP ϵ Polyclonal Antibody - Images



C/EBP ϵ Polyclonal Antibody - Background

Transcriptional activator (PubMed:26019275). C/EBP are DNA-binding proteins that recognize two

different motifs: the CCAAT homology common to many promoters and the enhanced core homology common to many enhancers. Required for the promyelocyte- myelocyte transition in myeloid differentiation (PubMed:10359588).