

**C/EBP  $\gamma$  Polyclonal Antibody**  
Catalog # AP68738**Specification**

---

**C/EBP  $\gamma$  Polyclonal Antibody - Product Information**

Application	<b>WB</b>
Primary Accession	<a href="#">P53567</a>
Reactivity	<b>Human, Mouse, Rat</b>
Host	<b>Rabbit</b>
Clonality	<b>Polyclonal</b>

**C/EBP  $\gamma$  Polyclonal Antibody - Additional Information****Gene ID** 1054**Other Names**

CEBPG; CCAAT/enhancer-binding protein gamma; C/EBP gamma

**Dilution**

WB~~Western Blot: 1/500 - 1/2000. Immunohistochemistry: 1/100 - 1/300. Immunofluorescence: 1/200 - 1/1000. ELISA: 1/20000. Not yet tested in other applications.

**Format**

Liquid in PBS containing 50% glycerol, 0.5% BSA and 0.09% (W/V) sodium azide.

**Storage Conditions**

-20°C

**C/EBP  $\gamma$  Polyclonal Antibody - Protein Information****Name** CEBPG**Function**

Transcription factor that binds to the promoter and the enhancer regions of target genes. Binds to the enhancer element PRE-I (positive regulatory element-I) of the IL-4 gene (PubMed:<a href="http://www.uniprot.org/citations/7665092" target="\_blank">7665092</a>). Binds to the promoter and the enhancer of the immunoglobulin heavy chain. Binds to GPE1, a cis-acting element in the G-CSF gene promoter.

**Cellular Location**

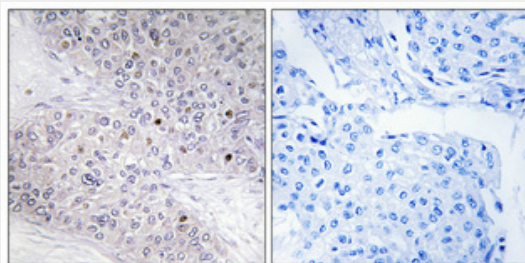
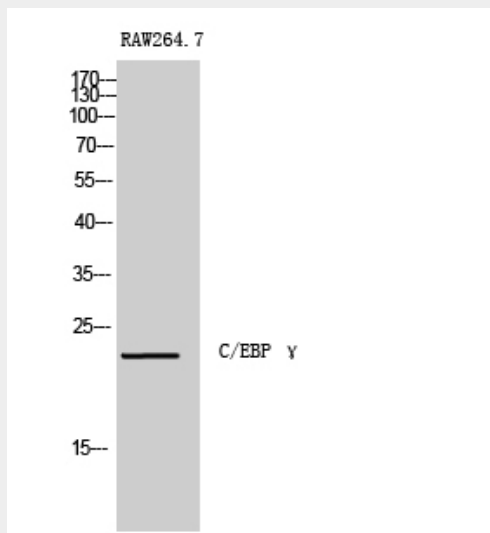
Nucleus {ECO:0000250|UniProtKB:P53568}.

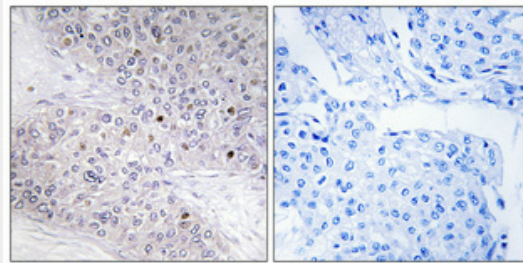
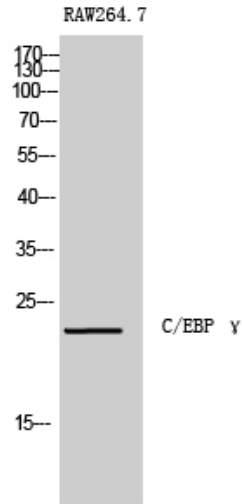
**C/EBP  $\gamma$  Polyclonal Antibody - Protocols**

Provided below are standard protocols that you may find useful for product applications.

- [Western Blot](#)
- [Blocking Peptides](#)
- [Dot Blot](#)
- [Immunohistochemistry](#)
- [Immunofluorescence](#)
- [Immunoprecipitation](#)
- [Flow Cytometry](#)
- [Cell Culture](#)

### C/EBP $\gamma$ Polyclonal Antibody - Images





### C/EBP $\gamma$ Polyclonal Antibody - Background

Transcription factor that binds to the promoter and the enhancer regions of target genes. Binds to the enhancer element PRE-I (positive regulatory element-I) of the IL-4 gene (PubMed:7665092). Binds to the promoter and the enhancer of the immunoglobulin heavy chain. Binds to GPE1, a cis-acting element in the G-CSF gene promoter.