

**BRS-3 Polyclonal Antibody**  
Catalog # AP68716**Specification**

---

**BRS-3 Polyclonal Antibody - Product Information**

Application	WB
Primary Accession	<a href="#">P32247</a>
Reactivity	Human
Host	Rabbit
Clonality	Polyclonal

**BRS-3 Polyclonal Antibody - Additional Information****Gene ID** 680**Other Names**

BRS3; Bombesin receptor subtype-3; BRS-3

**Dilution**

WB~~Western Blot: 1/500 - 1/2000. Immunofluorescence: 1/200 - 1/1000. ELISA: 1/40000. Not yet tested in other applications.

**Format**

Liquid in PBS containing 50% glycerol, 0.5% BSA and 0.09% (W/V) sodium azide.

**Storage Conditions**

-20°C

**BRS-3 Polyclonal Antibody - Protein Information****Name** BRS3**Function**

Role in sperm cell division, maturation, or function. This receptor mediates its action by association with G proteins that activate a phosphatidylinositol-calcium second messenger system.

**Cellular Location**

Cell membrane; Multi-pass membrane protein.

**Tissue Location**

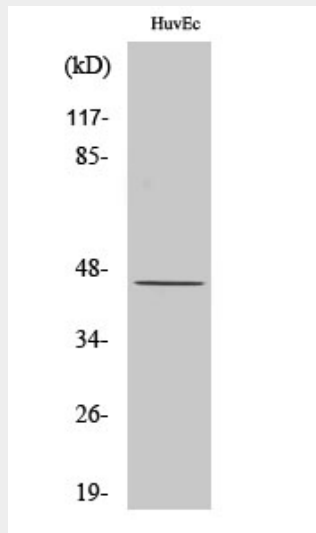
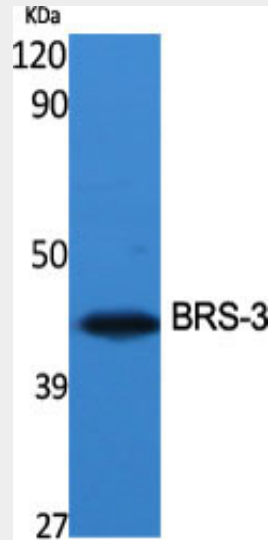
In germ cells in testis. Lung carcinoma cells.

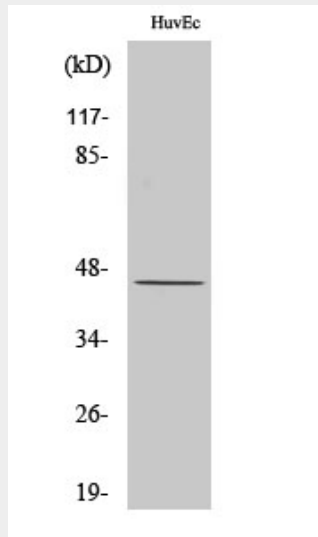
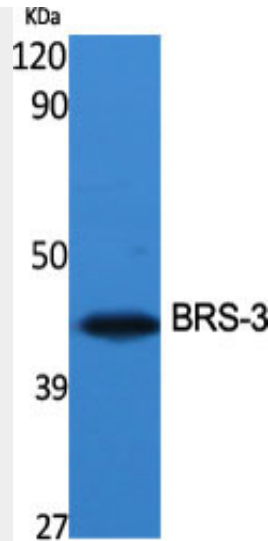
**BRS-3 Polyclonal Antibody - Protocols**

Provided below are standard protocols that you may find useful for product applications.

- [Western Blot](#)
- [Blocking Peptides](#)
- [Dot Blot](#)
- [Immunohistochemistry](#)
- [Immunofluorescence](#)
- [Immunoprecipitation](#)
- [Flow Cytometry](#)
- [Cell Culture](#)

### BRS-3 Polyclonal Antibody - Images





### **BRS-3 Polyclonal Antibody - Background**

Role in sperm cell division, maturation, or function. This receptor mediates its action by association with G proteins that activate a phosphatidylinositol-calcium second messenger system.