

**AR- $\beta$ 1 Polyclonal Antibody**  
Catalog # AP68542**Specification****AR- $\beta$ 1 Polyclonal Antibody - Product Information**

Application	WB
Primary Accession	<a href="#">P08588</a>
Reactivity	Human, Mouse, Rat
Host	Rabbit
Clonality	Polyclonal

**AR- $\beta$ 1 Polyclonal Antibody - Additional Information****Gene ID** 153**Other Names**

ADRB1; ADRB1R; B1AR; Beta-1 adrenergic receptor; Beta-1 adrenoreceptor; Beta-1 adrenoceptor

**Dilution**

WB~~Western Blot: 1/500 - 1/2000. Immunohistochemistry: 1/100 - 1/300. Immunofluorescence: 1/200 - 1/1000. ELISA: 1/20000. Not yet tested in other applications.

**Format**

Liquid in PBS containing 50% glycerol, 0.5% BSA and 0.09% (W/V) sodium azide.

**Storage Conditions**

-20°C

**AR- $\beta$ 1 Polyclonal Antibody - Protein Information****Name** ADRB1 ([HGNC:285](#))**Synonyms** ADRB1R, B1AR**Function**

Beta-adrenergic receptors mediate the catecholamine-induced activation of adenylate cyclase through the action of G proteins. This receptor binds epinephrine and norepinephrine with approximately equal affinity. Mediates Ras activation through G(s)-alpha- and cAMP-mediated signaling. Involved in the regulation of sleep/wake behaviors (PubMed:<a href="http://www.uniprot.org/citations/31473062" target="\_blank">31473062</a>).

**Cellular Location**

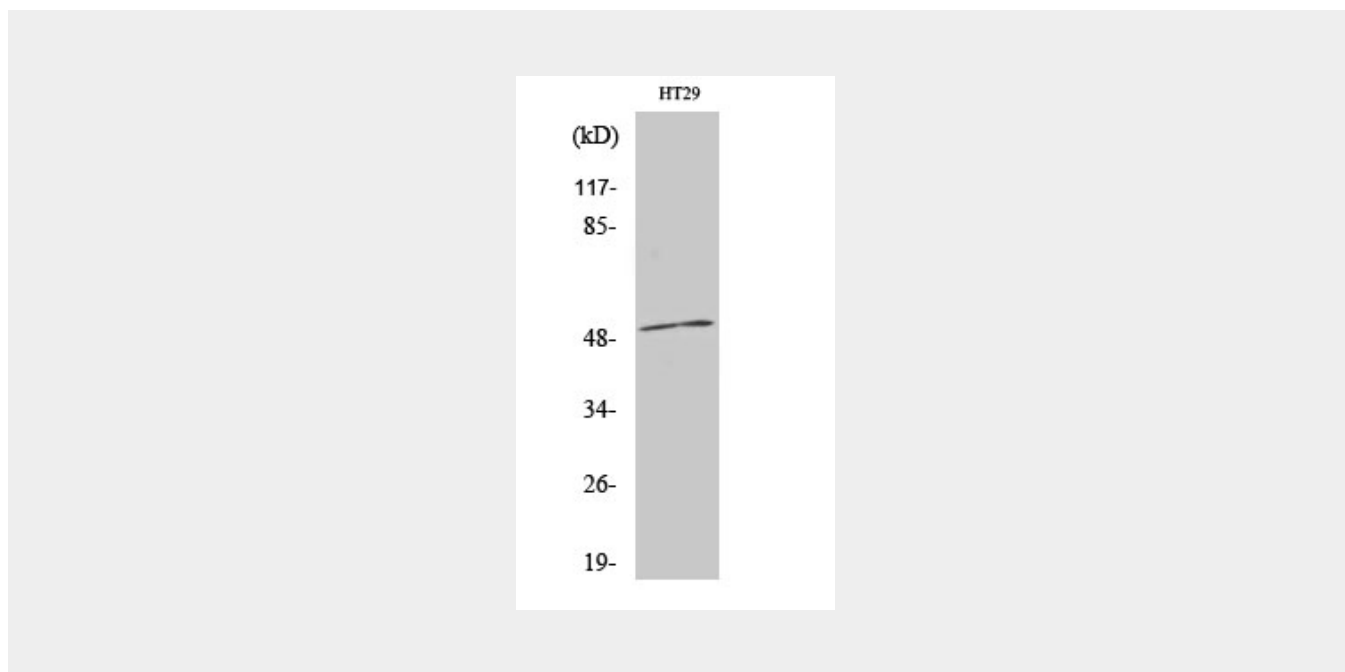
Cell membrane {ECO:0000250|UniProtKB:P18090}; Multi-pass membrane protein {ECO:0000250|UniProtKB:P18090}. Early endosome. Note=Colocalizes with RAPGEF2 at the plasma membrane (By similarity). Localized at the plasma membrane. Found in the Golgi upon GOPC overexpression.

## AR- $\beta$ 1 Polyclonal Antibody - Protocols

Provided below are standard protocols that you may find useful for product applications.

- [Western Blot](#)
- [Blocking Peptides](#)
- [Dot Blot](#)
- [Immunohistochemistry](#)
- [Immunofluorescence](#)
- [Immunoprecipitation](#)
- [Flow Cytometry](#)
- [Cell Culture](#)

## AR- $\beta$ 1 Polyclonal Antibody - Images



## AR- $\beta$ 1 Polyclonal Antibody - Background

Beta-adrenergic receptors mediate the catecholamine- induced activation of adenylate cyclase through the action of G proteins. This receptor binds epinephrine and norepinephrine with approximately equal affinity. Mediates Ras activation through G(s)-alpha- and cAMP-mediated signaling.