

**EPB41L4B Antibody (C-term)**  
**Purified Rabbit Polyclonal Antibody (Pab)**  
**Catalog # AP6851b**

**Specification**

---

**EPB41L4B Antibody (C-term) - Product Information**

Application	<b>WB, IHC-P,E</b>
Primary Accession	<a href="#">O9H329</a>
Reactivity	<b>Human</b>
Host	<b>Rabbit</b>
Clonality	<b>Polyclonal</b>
Isotype	<b>Rabbit IgG</b>
Calculated MW	<b>99712</b>
Antigen Region	<b>650-677</b>

**EPB41L4B Antibody (C-term) - Additional Information**

**Gene ID** 54566

**Other Names**

Band 41-like protein 4B, FERM-containing protein CG1, Protein EHM2, EPB41L4B, EHM2

**Target/Specificity**

This EPB41L4B antibody is generated from rabbits immunized with a KLH conjugated synthetic peptide between 650-677 amino acids from the C-terminal region of human EPB41L4B.

**Dilution**

WB~~1:1000  
IHC-P~~1:50~100

**Format**

Purified polyclonal antibody supplied in PBS with 0.09% (W/V) sodium azide. This antibody is prepared by Saturated Ammonium Sulfate (SAS) precipitation followed by dialysis against PBS.

**Storage**

Maintain refrigerated at 2-8°C for up to 2 weeks. For long term storage store at -20°C in small aliquots to prevent freeze-thaw cycles.

**Precautions**

EPB41L4B Antibody (C-term) is for research use only and not for use in diagnostic or therapeutic procedures.

**EPB41L4B Antibody (C-term) - Protein Information**

**Name** EPB41L4B ([HGNC:19818](#))

**Function** Up-regulates the activity of the Rho guanine nucleotide exchange factor ARHGEF18 (By similarity). Involved in the regulation of the circumferential actomyosin belt in epithelial cells

(PubMed:[22006950](#)). Promotes cellular adhesion, migration and motility in vitro and may play a role in wound healing (PubMed:[23664528](#)). May have a role in mediating cytoskeletal changes associated with steroid- induced cell differentiation (PubMed:[14521927](#)).

#### Cellular Location

Cytoplasm. Cell junction, tight junction Note=Accumulates along apical cell-cell boundaries and is also detected in the cytoplasm in a punctate manner.

#### Tissue Location

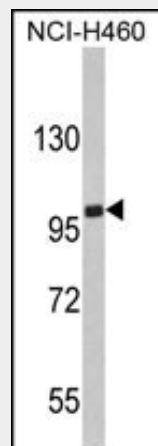
Expressed at higher levels in acute wounds than chronic wounds with increased expression in healing wounds, especially at the leading wound edge (PubMed:[23664528](#)). Isoform 1 is highly expressed in brain. Isoform 2 is highly expressed in testis with lower levels in prostate and breast (PubMed:[14521927](#))

### EPB41L4B Antibody (C-term) - Protocols

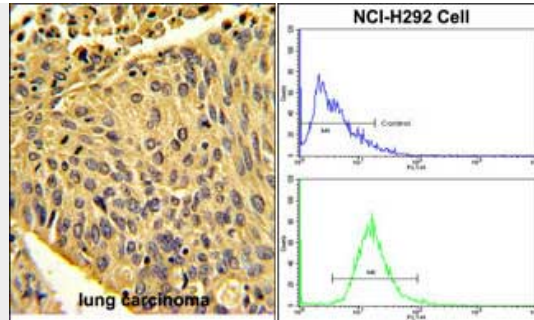
Provided below are standard protocols that you may find useful for product applications.

- [Western Blot](#)
- [Blocking Peptides](#)
- [Dot Blot](#)
- [Immunohistochemistry](#)
- [Immunofluorescence](#)
- [Immunoprecipitation](#)
- [Flow Cytometry](#)
- [Cell Culture](#)

### EPB41L4B Antibody (C-term) - Images



Western blot analysis of EPB41L4B Antibody (C-term) (Cat. #AP6851b) in NCI-H460 cell line lysates (35ug/lane). EPB41L4B (arrow) was detected using the purified Pab.(2ug/ml)



(LEFT)Formalin-fixed and paraffin-embedded human lung carcinoma with EPB41L4B Antibody (C-term), which was peroxidase-conjugated to the secondary antibody, followed by DAB staining. This data demonstrates the use of this antibody for immunohistochemistry; clinical relevance has not been evaluated. (RIGHT)Flow cytometric analysis of NCI-H292 cells using EPB41L4B Antibody (C-term)(bottom histogram) compared to a negative control cell (top histogram). FITC-conjugated goat-anti-rabbit secondary antibodies were used for the analysis.

#### **EPB41L4B Antibody (C-term) - References**

Leyne,M., et.al., Unpublished