

**ARMCX2 Polyclonal Antibody**  
Catalog # AP68515**Specification**

---

**ARMCX2 Polyclonal Antibody - Product Information**

Application	WB
Primary Accession	<a href="#">O7L311</a>
Reactivity	Human, Mouse, Rat
Host	Rabbit
Clonality	Polyclonal

**ARMCX2 Polyclonal Antibody - Additional Information****Gene ID** 9823**Other Names**

ARMCX2; ALEX2; KIAA0512; Armadillo repeat-containing X-linked protein 2; ARM protein lost in epithelial cancers on chromosome X 2; Protein ALEX2

**Dilution**

WB~~Western Blot: 1/500 - 1/2000. Immunohistochemistry: 1/100 - 1/300. Immunofluorescence: 1/200 - 1/1000. ELISA: 1/20000. Not yet tested in other applications.

**Format**

Liquid in PBS containing 50% glycerol, 0.5% BSA and 0.09% (W/V) sodium azide.

**Storage Conditions**

-20°C

**ARMCX2 Polyclonal Antibody - Protein Information****Name** ARMCX2**Synonyms** ALEX2, KIAA0512**Function**

May regulate the dynamics and distribution of mitochondria in neural cells.

**Cellular Location**

Mitochondrion {ECO:0000250|UniProtKB:Q6A058}. Mitochondrion outer membrane {ECO:0000250|UniProtKB:Q8BHS6}; Single-pass membrane protein

**Tissue Location**

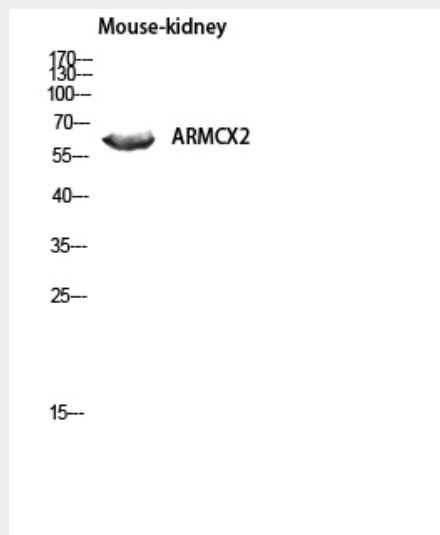
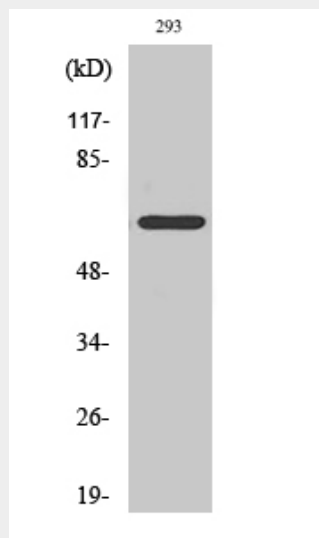
Expressed at high levels ovary, heart, testis, prostate, brain, spleen and colon. Expressed at very low levels in liver and thymus. Not expressed in peripheral blood leukocytes. Not expressed in pancreas and ovarian carcinomas

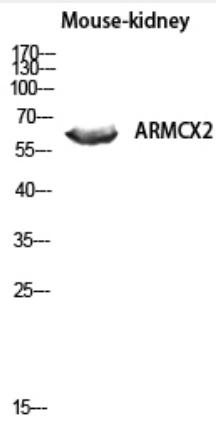
## ARMCX2 Polyclonal Antibody - Protocols

Provided below are standard protocols that you may find useful for product applications.

- [Western Blot](#)
- [Blocking Peptides](#)
- [Dot Blot](#)
- [Immunohistochemistry](#)
- [Immunofluorescence](#)
- [Immunoprecipitation](#)
- [Flow Cytometry](#)
- [Cell Culture](#)

## ARMCX2 Polyclonal Antibody - Images





### ARMCX2 Polyclonal Antibody - Background

May regulate the dynamics and distribution of mitochondria in neural cells.