

ARMCX1 Polyclonal Antibody
Catalog # AP68514

Specification

ARMCX1 Polyclonal Antibody - Product Information

Application	WB
Primary Accession	Q9P291
Reactivity	Human
Host	Rabbit
Clonality	Polyclonal

ARMCX1 Polyclonal Antibody - Additional Information

Gene ID 51309

Other Names

ARMCX1; ALEX1; AD032; Armadillo repeat-containing X-linked protein 1; ARM protein lost in epithelial cancers on chromosome X 1; Protein ALEX1

Dilution

WB~~Western Blot: 1/500 - 1/2000. Immunohistochemistry: 1/100 - 1/300. Immunofluorescence: 1/200 - 1/1000. ELISA: 1/20000. Not yet tested in other applications.

Format

Liquid in PBS containing 50% glycerol, 0.5% BSA and 0.09% (W/V) sodium azide.

Storage Conditions

-20°C

ARMCX1 Polyclonal Antibody - Protein Information

Name ARMCX1

Synonyms ALEX1

Function

Regulates mitochondrial transport during axon regeneration. Increases the proportion of motile mitochondria by recruiting stationary mitochondria into the motile pool. Enhances mitochondria movement and neurite growth in both adult axons and embryonic neurons. Promotes neuronal survival and axon regeneration after nerve injury. May link mitochondria to the Trak1-kinesin motor complex via its interaction with MIRO1.

Cellular Location

Mitochondrion {ECO:0000250|UniProtKB:Q9CX83}. Mitochondrion outer membrane {ECO:0000250|UniProtKB:Q9CX83}; Single-pass membrane protein

Tissue Location

Expressed at high levels ovary, heart, testis, prostate, brain, spleen and colon. Expressed at very

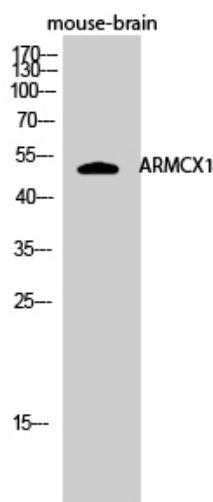
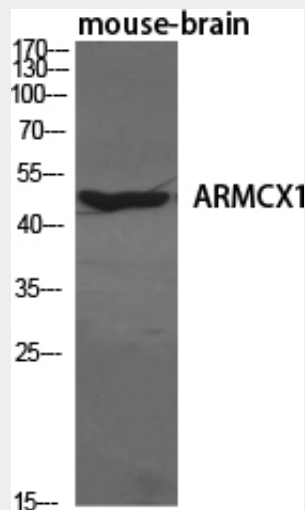
low levels in liver and thymus. Not expressed in peripheral blood leukocytes. Not or reduced expressed in lung, prostate, colon, pancreas and ovarian carcinomas.

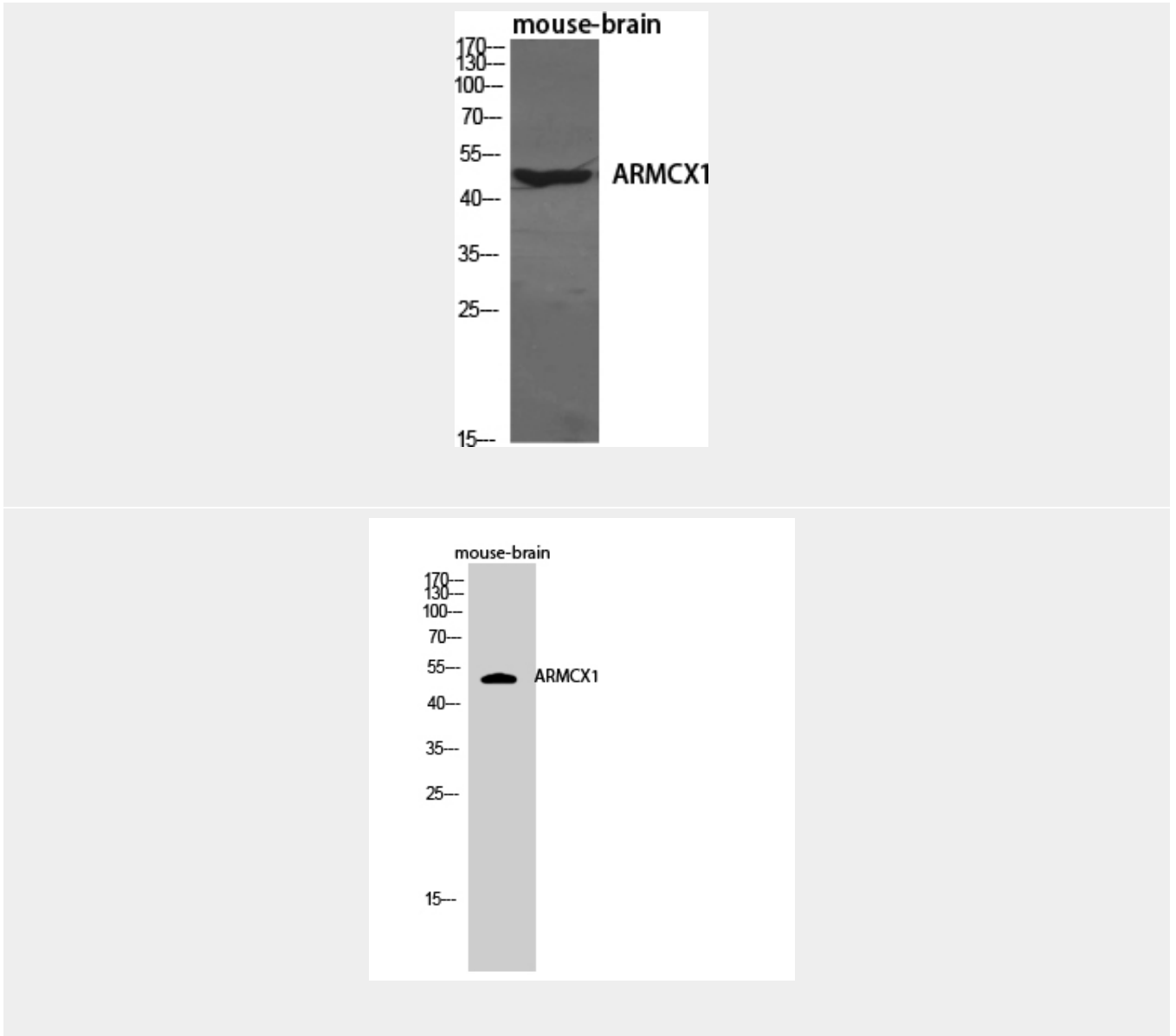
ARMCX1 Polyclonal Antibody - Protocols

Provided below are standard protocols that you may find useful for product applications.

- [Western Blot](#)
- [Blocking Peptides](#)
- [Dot Blot](#)
- [Immunohistochemistry](#)
- [Immunofluorescence](#)
- [Immunoprecipitation](#)
- [Flow Cytometry](#)
- [Cell Culture](#)

ARMCX1 Polyclonal Antibody - Images





ARMCX1 Polyclonal Antibody - Background

Regulates mitochondrial transport during axon regeneration. Increases the proportion of motile mitochondria by recruiting stationary mitochondria into the motile pool. Enhances mitochondria movement and neurite growth in both adult axons and embryonic neurons. Promotes neuronal survival and axon regeneration after nerve injury. May link mitochondria to the Trak1-kinesin motor complex via its interaction with MIRO1.