

A-Raf Polyclonal Antibody
Catalog # AP68487**Specification**

A-Raf Polyclonal Antibody - Product Information

Application	WB
Primary Accession	P10398
Reactivity	Human, Mouse, Rat, Monkey
Host	Rabbit
Clonality	Polyclonal

A-Raf Polyclonal Antibody - Additional Information**Gene ID** 369**Other Names**

ARAF; ARAF1; PKS; PKS2; Serine/threonine-protein kinase A-Raf; Proto-oncogene A-Raf; Proto-oncogene A-Raf-1; Proto-oncogene Pks

Dilution

WB~~Western Blot: 1/500 - 1/2000. ELISA: 1/20000. Not yet tested in other applications.

Format

Liquid in PBS containing 50% glycerol, 0.5% BSA and 0.09% (W/V) sodium azide.

Storage Conditions

-20°C

A-Raf Polyclonal Antibody - Protein Information**Name** ARAF**Synonyms** ARAF1, PKS, PKS2**Function**

Involved in the transduction of mitogenic signals from the cell membrane to the nucleus. May also regulate the TOR signaling cascade. Phosphorylates PFKFB2 (PubMed:36402789).

Tissue Location

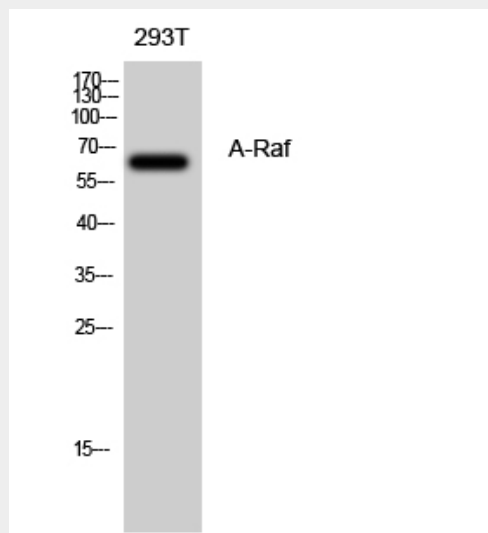
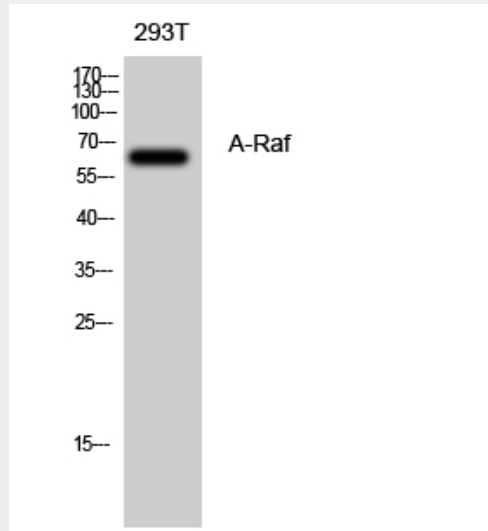
Predominantly in urogenital tissues.

A-Raf Polyclonal Antibody - Protocols

Provided below are standard protocols that you may find useful for product applications.

- [Western Blot](#)
- [Blocking Peptides](#)
- [Dot Blot](#)
- [Immunohistochemistry](#)
- [Immunofluorescence](#)
- [Immunoprecipitation](#)
- [Flow Cytometry](#)
- [Cell Culture](#)

A-Raf Polyclonal Antibody - Images



A-Raf Polyclonal Antibody - Background

Involved in the transduction of mitogenic signals from the cell membrane to the nucleus. May also regulate the TOR signaling cascade.