

**AR  $\alpha$ 2C Polyclonal Antibody**  
Catalog # AP68483**Specification**

---

**AR  $\alpha$ 2C Polyclonal Antibody - Product Information**

Application	WB
Primary Accession	<a href="#">P18825</a>
Reactivity	Human, Mouse, Rat
Host	Rabbit
Clonality	Polyclonal

**AR  $\alpha$ 2C Polyclonal Antibody - Additional Information****Gene ID** 152**Other Names**

ADRA2C; ADRA2L2; ADRA2RL2; Alpha-2C adrenergic receptor; Alpha-2 adrenergic receptor subtype C4; Alpha-2C adrenoreceptor; Alpha-2C adrenoceptor; Alpha-2CAR

**Dilution**

WB~~Western Blot: 1/500 - 1/2000. Immunohistochemistry: 1/100 - 1/300. Immunofluorescence: 1/200 - 1/1000. ELISA: 1/10000. Not yet tested in other applications.

**Format**

Liquid in PBS containing 50% glycerol, 0.5% BSA and 0.09% (W/V) sodium azide.

**Storage Conditions**

-20°C

**AR  $\alpha$ 2C Polyclonal Antibody - Protein Information****Name** ADRA2C**Synonyms** ADRA2L2, ADRA2RL2**Function**

Alpha-2 adrenergic receptors mediate the catecholamine- induced inhibition of adenylate cyclase through the action of G proteins.

**Cellular Location**

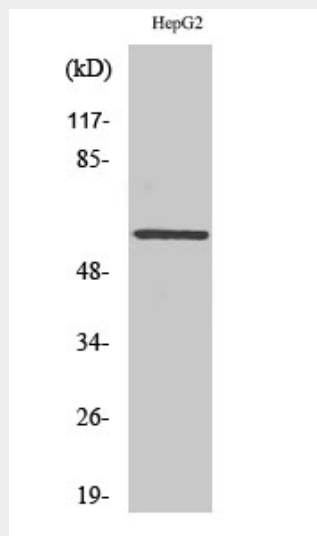
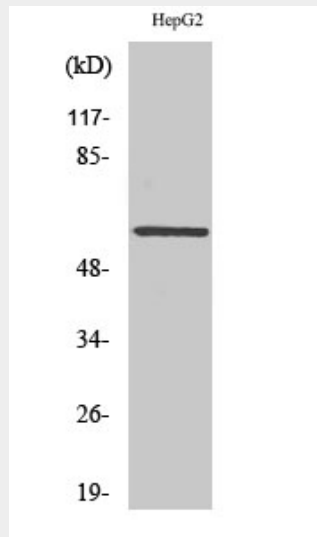
Cell membrane; Multi-pass membrane protein.

**AR  $\alpha$ 2C Polyclonal Antibody - Protocols**

Provided below are standard protocols that you may find useful for product applications.

- [Western Blot](#)
- [Blocking Peptides](#)
- [Dot Blot](#)
- [Immunohistochemistry](#)
- [Immunofluorescence](#)
- [Immunoprecipitation](#)
- [Flow Cytometry](#)
- [Cell Culture](#)

### AR $\alpha$ 2C Polyclonal Antibody - Images



### AR $\alpha$ 2C Polyclonal Antibody - Background

Alpha-2 adrenergic receptors mediate the catecholamine- induced inhibition of adenylate cyclase through the action of G proteins.