

## **ApoF Polyclonal Antibody** Catalog # AP68459

### **Specification**

---

#### **ApoF Polyclonal Antibody - Product Information**

Application	<b>WB</b>
Primary Accession	<a href="#">Q13790</a>
Reactivity	<b>Human</b>
Host	<b>Rabbit</b>
Clonality	<b>Polyclonal</b>

#### **ApoF Polyclonal Antibody - Additional Information**

**Gene ID** 319

##### **Other Names**

APOF; Apolipoprotein F; Apo-F; Lipid transfer inhibitor protein; LTIP

##### **Dilution**

WB~~Western Blot: 1/500 - 1/2000. ELISA: 1/40000. Not yet tested in other applications.

##### **Format**

Liquid in PBS containing 50% glycerol, 0.5% BSA and 0.09% (W/V) sodium azide.

##### **Storage Conditions**

-20°C

#### **ApoF Polyclonal Antibody - Protein Information**

**Name** APOF

##### **Function**

Minor apolipoprotein that associates with LDL. Inhibits cholesteryl ester transfer protein (CETP) activity and appears to be an important regulator of cholesterol transport. Also associates to a lesser degree with VLDL, Apo-AI and Apo-AII.

##### **Cellular Location**

Secreted

##### **Tissue Location**

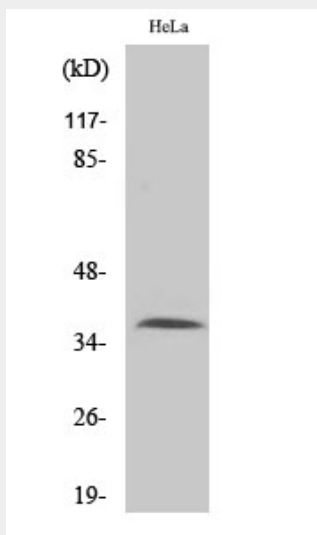
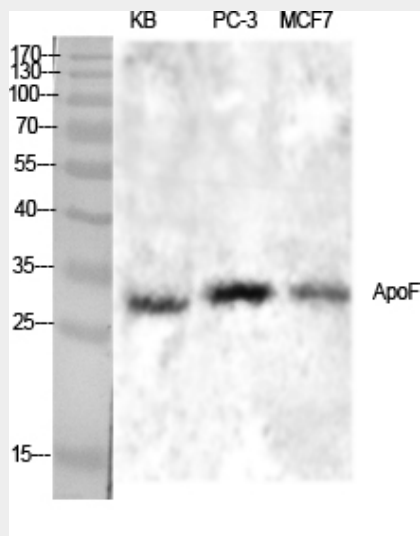
Expressed by the liver and secreted in plasma.

#### **ApoF Polyclonal Antibody - Protocols**

Provided below are standard protocols that you may find useful for product applications.

- [Western Blot](#)
- [Blocking Peptides](#)
- [Dot Blot](#)
- [Immunohistochemistry](#)
- [Immunofluorescence](#)
- [Immunoprecipitation](#)
- [Flow Cytometry](#)
- [Cell Culture](#)

### ApoF Polyclonal Antibody - Images



### ApoF Polyclonal Antibody - Background

Minor apolipoprotein that associates with LDL. Inhibits cholesteryl ester transfer protein (CETP) activity and appears to be an important regulator of cholesterol transport. Also associates to a lesser degree with VLDL, Apo-AI and Apo-AII.